

# PARKS & RECREATION BOARD AGENDA

**Date:** October 8, 2019, 12:00 PM  
**Location:** Currents  
600 Cregg Lane  
Missoula, MT 59802  
**Members:** Dale Harris (chair), Ross Mollenhauer, Wendy Ninteman, John O'Conner, Chris Ryan, Sonja Verlanic, Johnna Eisenmann

To request auxiliary aids or service to participate in this meeting, please contact Corena Maurer at 406-552-6253. Please provide at least 48 hours advanced notice or more, so we can make needed arrangements.

---

## Pages

### 1. Administrative Business

#### 1.1 Roll Call

#### 1.2 Approval of the Minutes

Approval of September 10, 2019 minutes

#### 1.3 Announcements

#### 1.4 Public/Guest Comments

1

### 2. Action Items

#### 2.1 Appoint Subcommittee to Review Applicants for Conservation Lands Advisory Committee

Morgan Valliant

6

##### Recommended motion:

move the Missoula Parks and Recreation Board appoint a temporary subcommittee to review applications and make a recommendation to the Park board on appointments to the Conservation Lands Advisory Committee.

#### 2.2 Appoint Park Board Liaison to Conservation Lands Advisory Committee

Morgan Valliant

7

##### Recommended motion:

move the Missoula Parks and Recreation Board appoint a Park and Recreation Board liaison to the Conservation Lands Advisory Committee.

**Recommended motion:**

move the Missoula Parks and Recreation Board support and recommend that the Missoula City Council approve expenditures of up to \$775,000 of 2018 Open Space Bond funds for the Clark Fork River Access and Restoration Project, Urban Reforestation Project, and Trails & Trailheads projects as per the attached exhibits (with or without edits).

**3. Presentations/Discussions/Updates**

3.1	Day in the Life - Communication & Marketing Efforts	Becky Goodrich	
3.2	Staff Report - Developed Park Maintenance	TJ Machado	53
3.3	Division Report - Recreation (Outdoor Recreation and Sports & Wellness)	Shirley Kinsey	57
3.4	FY20 Budget/ CIP	Ryan Applegate	
3.5	Inclusion/ Equity Committee Update	Wendy Ninteman	
	Training for Park Board and Managers scheduled for November 12, 2019		

**4. Future or Held Items**

**5. Adjournment**

## **PARKS & RECREATION BOARD MINUTES**

**September 10, 2019**

**12:00 PM**

**Currents**

**600 Cregg Lane**

**Missoula, MT 59802**

**Members present:** Dale Harris (chair), Ross Mollenhauer, Wendy Ninteman, John O'Conner, Chris Ryan, Sonja Verlanic  
**Members absent:** Johnna Eisenmann

### **1. Administrative Business**

#### **1.1 Roll Call**

Staff Present: Donna Gaukler, Ryan Applegate, Morgan Valliant, Neil Miner, Nathan McLeod, Gerald Auch, Marie Anderson, Jolanda Cummings and Cassy Gladwin

#### **1.2 Approval of the Minutes**

##### **1.2.1 Minutes from the August 13, 2019 meeting**

Chris Ryan moved to approve minutes. Sonja Verlanic seconded the motion.

The minutes were approved as submitted

#### **1.3 Announcements**

Morgan Valliant notified the Board that appointments for Conservation Lands Advisory Committee will be coming up and can be discussed at the October 8, 2019 meeting.

Ryan Applegate introduced Jolanda Cummings. Jo is a new Accounting Technician that will be part of the Business Functional Team. She will be assisting with CLM/Open Space & Projects/Planning

##### **1.3.1 Introduction of Open Space Manager**

Donna announced that Grant Carlton was selected as the new Open Space Manager. Donna provided information on his education and experience. Grant will start full time October 7, 2019.

#### **1.4 Public/Guest Comments**

None

### **2. Action Items**

#### **2.1 Approval of Westside Park Master Plan, Narrative and Budget**

Nathan McLeod presented the item to approve the master plan, narrative and budget for Westside Park. Nathan provided information on the design process, park goals and

assumptions. Existing park conditions were reviewed; features needing replacement were highlighted. Playground project goals, assumptions, and existing conditions/assessment were reviewed.

Ross Mollenhauer - Dragon Hollow playground doesn't meet the same assessment criteria

Nathan McLeod - Dragon Hollow is not attached to a public school; there are different conditions when the public is in the park while school is in session.

Nathan presented findings from student led playground field trips, and public open house (January 2019).

Nathan reviewed the conceptual master plan for the park.

Ross Mollenhauer - is the closure of the playground during school hours happening now?

Nathan McLeod - yes, this is already occurring; toddler playground for preschools would be open during day. There will be separation between the two; both can be in use at the same time.

Discussion took place on fencing in parks where schools exist. Advantages and disadvantages were noted.

Sonja Verlanic - pickleball, tennis and basketball courts are fenced in and closed to public during school hours - could this create conflict? Why combined?

Nathan McLeod - courts were combined to prevent loss of green space. The court is used for school purposes during the day but would be open to public when not in use.

Ross Mollenhauer - will the picnic shelter be rented by groups without roof?

Donna Gaukler - yes; there are already spaces available to rent without roofs.

It was noted that the adoption of the plan is contingent with MCPS adopting it. If MCPS were to make changes then the plan would move back to Park Board for approval.

**Moved by:** Ross Mollenhauer

move the Missoula Parks and Recreation Board adopt the Westside Park Master Plan, including park narrative, with the condition that the Missoula County School Board renew the Westside Park Lease agreement, and adopt the Master Plan and park narrative.

Sonja Verlanic seconded the motion.

AYES: (5): Dale Harris, Ross Mollenhauer, Wendy Ninteman, Chris Ryan, and Sonja Verlanic

ABSENT: (2): John O'Conner, and Johnna Eisenmann

**Vote results: Approved (5 to 0)**

## **2.2 Approval of Westside Park Capital Campaign**

Donna Gaukler introduced the item to approve the Westside Park Capital Program.

Nathan McLeod presented two playground design options for the park. Option B reflected input of desired features from the group of student representative's while Option A contained comparative features but less in cost. Option A continues to meets goals/ play values of park/playground. Budgets for each were reviewed.



Ross Mollenhauer - what is the size of the student design compared to Bonner Park?  
Nathan McLeod - Option B (student design) is three times the size of Bonner playground.

Nathan McLeod reviewed the capital campaign/ tiers of giving. Donations would allow for naming rights; full playground, playground zone, and/or park feature.

Wendy Ninteman - are naming rights for the life of the park?

Donna Gaukler - naming rights are for term life/ life of improvement. Park Board retains right to review names.

Sonja Verlanic - when will you find out about the lease with MCPS to renew management of parkland?

Donna Gaukler - may be up to a month before knowing.

John O'Connor - do you have estimated figures for ongoing maintenance of park/playground  
Donna Gaukler - not yet, will be creating an MIS (maintenance impact statement) for figures

**Moved by:** Wendy Ninteman

move the Missoula Parks and Recreation Board adopt the Westside Park Capital Campaign, pending approval by MCPS.

Chris Ryan seconded the motion.

John O'Connor urged caution when taking on projects that have not been funded through the budget. Unfunded projects can/may lead to overwhelming staff and impact resources. Donna Gaukler agreed with this and noted that Parks receives a large number of projects/ requests every year. This park/playground was given high priority given a number of factors; playground is deteriorating, initial funding has already been identified/established and working group of partners is attached.

AYES: (6): Dale Harris, Ross Mollenhauer, Wendy Ninteman, John O'Conner, Chris Ryan, and Sonja Verlanic

ABSENT: (1): Johnna Eisenmann

**Vote results: Approved (6 to 0)**

### **3. Presentations/Discussions/Updates**

#### **3.1 Open Space Updates**

##### **3.1.1 Review Updates to Open Space Ordinance**

Donna Gaukler presented an update to the draft MMC 12.56.010 presented at August's meeting. Review and suggested edits from the August 29, 2019 Open Space Advisory Committee (OSAC) meeting was discussed by city leadership (Mayor/ and Council representatives). Draft MMC 12.56.010 was updated to reflect both OSAC and city leadership input. The draft will go before OSAC for review at next meeting scheduled September 12, 2019.

Donna Gaukler identified areas in which edits were made following OSAC and city leadership review.

12.56.015 Terms and definitions - updated to include type of conservation bond funds

John O'Connor - why was text Item C of 12.56.020 removed?

Donna Gaukler - text is clarified in other section of document (disposal) - this item specifically reference bonds in this section

12.56.030 General Policies - Item I was added specific to OSAC review/comment responses

12.56.050 Conservation bond - Item A was updated to include all bonds/funds.

12.56.070 - Citizens Advisory Committee on Open Space - appointments to be made by Council, Mayor and Park Board. Benefits of Mayor appointing members was discussed.

12.56.110 - Conversion or diversion of open space land - percentage of vote in favor of change or disposal must be met through election. Donna noted City Council will still need to approve and public hearing would take place.

Wendy Ninteman - conversion/disposal of land is worrisome - how do we ensure that land acquired with open space funds remain open space - something to think about

Donna Gaukler - land/space up for conversion/ disposal would need to go before the public, and pass on a ballot. Funds return to specific bond fund if property were disposed of.

### **3.1.2 Open Space Plan to Planning Board**

Planning Board Meeting September 17, 2019

Donna Gaukler announced the plan will move to Planning Board on September 17, 2019. Donna encouraged Park Board members to voice support of the plan to BCC as it aligns/complies with growth policy. The adoption process will continue with review from the City Council and Missoula Board of County Commissioners (BCC).

### **3.1.3 Open Space Capital Projects (Undertakings)**

Review Process Continued

Morgan Valliant gave an updated presentation on Open Space Capital Projects (Undertakings). An overview of general bond purposes and new to 2018 bond capital projects were reviewed

Morgan presented finding of the needs assessment from the PROST survey (Parks, Recreation, Open Space and Trails). The city/county household survey contained county/community goals for open space/parks.

Morgan informed the Board that bond eligible city undertakings included acquisitions and capital projects. Figures for each category was outlined in City Council Adopted Resolution 8276. Morgan outlined potential projects under the capital projects area of the resolution. A summary of expenses for each project was provided.

John O'Connor - what was the number of respondents for the survey?

Donna Gaukler - do not have the number but survey was statistically valid.

John O'Connor - do you have budget numbers for north bank of Clark Fork river restoration?

Morgan Valliant - not at this time

#### **3.1.4 Open Space Criteria**

(Time Pending) - Item was not discussed

### **3.2 Day in the Life**

Ryan Applegate, Business Manager

Ryan Applegate, Business Manager presented an overview of his role in Parks and Recreation. Ryan provided background on the Business Functional Team and highlighted ways in which the team provides support to the department.

John O'Connor complimented Parks and Recreation way of conducting business and ability to provide timely information for reporting purposes.

### **3.3 FY20 Budget/CIP**

Item will be discussed at October 8, 2019 meeting.

## **4. Future or Held Items**

## **5. Adjournment**

Meeting adjourned 2:02 pm

## **Missoula Parks and Recreation Board Referral**

---

Citizen or Organization Name: Missoula Parks and Recreation Board

Main Contact: Dale Harris

Address

Phone:

E-mail:

Parks & Recreation Staff Contact: Morgan Valliant

Referral to: Missoula Parks and Recreation Board

Requested date for Board consideration: 10/8/19

Referral Item: Appointment of a subcommittee to review CLAC applications

Motion/Action requested:

I move the Missoula Parks and Recreation Board appoint \_\_\_\_\_ to a temporary subcommittee to review applications and make a recommendation to the Park board on appointments to the Conservation Lands Advisory Committee

Brief Statement regarding the action you want taken by the Park Board.  
Appoint sub committee

Background information:

Each year a handful of CLAC members terms expire. It is the role of the Missoula Parks and Recreation board to review applications and appoint members to this committee.

Attachments: NONE

Staff report: NONE

Staff recommendation to Parks Board: appoint a subcommittee please.

## **Missoula Parks and Recreation Board Referral**

---

Citizen or Organization Name: Missoula Parks and Recreation Board

Main Contact: Dale Harris

Address

Phone:

E-mail:

Parks & Recreation Staff Contact: Morgan Valliant

Referral to: Missoula Parks and Recreation Board

Requested date for Board consideration: 10/8/19

Referral Item: Appointment of a Park Board Liaison to the Conservation Lands  
Advisory Committee

Motion/Action requested:

I move the Missoula Parks and Recreation Board appoint  
\_\_\_\_\_ as the Park and Recreation Board's  
liaison to the Conservation Lands Advisory Committee.

Brief Statement regarding the action you want taken by the Park Board.

Appoint liaison

Background information:

The Parks and Recreation Board appoint a liaison to the CLAC for to serve up to a 3-year term as a voting member of the committee. This year the current liaison's term expired. It is the role of the Missoula Parks and Recreation board to appoint a liaison to this committee.

Attachments: NONE

Staff report: NONE

Staff recommendation to Parks Board: appoint a liaison please.

## **Missoula Parks and Recreation Board Referral**

---

Citizen or Organization Name: Missoula Parks and Recreation

Main Contact: Morgan Valliant

Address

Phone:

E-mail:

Parks & Recreation Staff Contact: Morgan Valliant

Referral to: Missoula Parks and Recreation Board

Requested date for Board consideration: 10/8/19

Referral Item: Review 2018 Open Space Bond initial capital improvement  
undertaking request s and make a recommendation to  
Missoula City Council

Motion/Action requested:

I move the Missoula Parks and Recreation Board support  
and recommend that the Missoula City Council approve  
expenditures of up to \$775,000 of 2018 Opens Space Bond  
funds for the Clark Fork River Access and Restoration  
Project, Urban Reforestation Project, and Trails & Trailheads  
projects as per the attached exhibits (with or without edits).

Brief Statement regarding the action you want taken by the Park Board:  
Recommend expenditure of 2018 OS bond funds for capital Improvement  
projects.

Background information: Significant background described in attachments

Attachments: 2018 OS Bond Draft Undertakings presentation, 2018 OS Bond  
Undertakings CL Trails, 2018 OS Bond Undertakings River Access, 2018 OS  
Bond Undertakings River Access

Staff report: See attachments

Staff recommendation to Parks Board: Recommend to Council to approve  
expenditures please.

**EXHIBIT: \_\_\_\_\_**

**2018 Open Space Bond Capital Improvement INITIAL Undertaking:**  
*Missoula Conservation Lands Trailhead Improvement Projects*

The 2018 Missoula County Open Space Bond was approved by Missoula County residents during the November 2018 General Election. The bond measure included up to \$.5 million for improving Trails and Trailheads across Missoula's Open Space and Conservation Lands System. Missoulians have been passing Open Space Bonds and acquiring Open Space Lands since the mid-1980's. As the City of Missoula's Conservation Lands System has grown maintenance of these lands has lagged behind. In 2007 the Conservation Land's Management program was funded and for the past decade this program has focused on developing and implementing maintenance standards across the system. Currently, the City of Missoula manages over 4300ac. of conservation lands with over 63 trailheads and almost 54 mi. of trail. The majority of these trailheads and trails were established by the public and upgrading this infrastructure to meet current City Standards has been challenging.

This proposal describes two distinct projects to upgrade existing trailheads on City Conservation Lands.

- 1) **Waterworks Hill Trailhead and Interpretative trail:** construct appropriate parking area, upgrade trailhead signs and infrastructure to meet standards, build ADA loop trail and connections to existing N. hills trail system, provide site-specific interpretative education and education on responsible recreation. (Attachment A & B)
- 2) **Upgrade existing primary, secondary and local access points:** standardize all rules and regulations signage, provide bear-resistant trash cans where needed, upgrade all trail maps, and provide informational kiosks (as per adopted 2010 Trailhead standards) at all Primary Access points. (Attachment C)

**PROJECT DEVELOPMENT AND PRIOR PUBLIC PROCESS:**

*2008 Trail Inventory*

In 2008, the Conservation Lands Manager conducted a trail inventory using data from public and private entities with GPS tracks, existing City trail maps, site-specific knowledge, and input from citizen advisory committees. This was the first inventory of trails on the City's Conservation Lands since the creation of the Conservation Lands Management program in 2006 and represented the first comprehensive effort to map all Conservation Land Trails. Results from the 2008 inventory were presented to the Mt. Jumbo Advisory Committee, Greenough Park Advisory Committee, Conservation Lands Technical Working Group, Conservation Lands Management Plan Working Group, and the Missoula Park Board and the general public through multiple public meetings and open houses during the development of the Conservation Lands Management Plan with the intent to describe and adopt an official trail map for Missoula's Conservation Lands.

*2010 Conservation Lands Management Plan*

The Conservation Lands Management Plan (CLMP) was adopted in 2010 by Missoula's City Council following an extensive 2 year public process. The CLMP memorializes the designated trail system on City Conservation Lands, recognizing a total of 45.6 miles of designated system trails. The CLMP also defines the standards and specifications for trail construction throughout the system according to their designated use. In regards to trailheads, the CLMP identifies upgrading existing trailheads as a major

need and outlines the desired specifications for primary, secondary, and local access trailheads as follows:

- Primary trailhead (6 total....as per 2010)  
Located in areas that have a number of trails or are primary origination points of trail systems and have adequate space to accommodate vehicles. Should have an informational kiosk with rules and regulations, educational information, trail maps, parking for 8-10 vehicles, bike rack, access gate, trashcan, mutt-mitts and, possibly, sanitary and picnic facilities.
- Secondary trailhead (27 total....as per 2010)  
Located in areas that provide access to trail systems where less developed character is desired and have adequate space for several vehicles. Include information sign and map, parking for 2-8 vehicles, bike rack, access gate, trashcan and mutt-mitts.
- Local access point (30 total..... as per 2010)  
Located where primarily local residents access a trail. No parking is provided in these areas. Include information sign, access gate, and depending on the site, a bike rack, and mutt-mitts.

Trailhead upgrades identified in this proposal directly relate to the standards described in Chapter 5 and the implementation strategies described in chapter 6 of the CLMP.

#### *2015 Trail Inventory and Condition Assessment*

In 2015, Conservation Lands Management staff conducted a comprehensive inventory and completed the first ever condition assessment of all trails located on Missoula Conservation Lands. Based on the standards outlined in the CLMP, both trails and trailheads were assessed for problems or insufficiencies. Key results from this inventory and assessment include:

- 53.63 miles of designated system trails (18% increase from 2008)
- 19.89 miles of non-system or user-made trails (100% increase from 2008)
- 351 documented problem points where trail width, grade, cross-slope, vegetation clearing, or surface obstacles did not meet the CLMP standards
- 8 primary, 25 secondary, and 30 local access trailheads documented
- Only 1 primary, no secondary, and half of local access trailhead met the CLMP standards

Management priorities outlined in the 2015 inventory and conditions assessment were developed during several Conservation Lands Advisory Committee meetings, were ultimately adopted by the Missoula Parks and Recreation Board, and then presented to Missoula's City Council. All of these meetings were open to the public and public input on these priorities were received as priorities were developed.

#### *2019 Trailhead Inventory and Condition Assessment*

The majority of the trailheads in the Conservation Lands System were developed over a 30 year period and many contain inconsistent signage, inaccurate trail maps and in many cases do not comply with current trailhead standards and/or City ordinances. In an effort to provide consistency between these



City trailheads Conservation Lands Management staff started an inventory of all Conservation Land trailheads and access points in the spring of 2019. Staff will visit all 63 access points to document the condition of all infrastructure, GPS the site and take a picture of all signs. It is anticipated that this inventory will be completed in fall of 2019. Data from this inventory will provide all the information needed to complete a comprehensive upgrade of all Primary, Secondary and Local access points.

#### PROJECT BUDGET:

A multitude of funding opportunities exist for improving public recreation al resources. Project coordinators intend to leverage Open Space Bond Funds with, park district, state/local/neighborhood grants, partnerships, donations, the Conservation and Stewardship mil levy and existing maintenance budgets to implement both of the projects described in this undertaking.

***Waterworks Hill Trailhead and ADA trail, Estimated Project Budget:*** this budget is based on estimate from similar projects implemented across Missoula over the past 5 years. A preliminary grading plan and master site plan (Attachment A & B) have been developed for this project. Final design and engineering is needed to refine accurate project costs. A \$50,000 State Recreational Trails Project Grant was awarded to this project in spring 2019 to offset construction costs of the ADA trail and overlook

Activity	Average Costs	Funding Source
Engineering/Surveying /permitting of trailhead & amenities, design of onsite interpretation, construction oversight	\$135,000.00	Open Space Bond
Access road improvements	\$170,200.00	Msla. Street Dist. Plus private donation
Construction of Parking lot	\$130,500.00	Msla. Water Utility Enterprise fund
Trailhead construction	\$83,000	Conservation Mil Levy, Msla. Water Utility Enterprise fund
ADA loop trail & Overlook	86,500	Conservation Mil Levy, Grants and Donations
<b><i>Estimated Total Project Cost</i></b>	<b><i>\$605,200</i></b>	

The Waterworks trailhead project would begin in winter 2019 with anticipated completion date of spring 2021. Upgrading all other trailheads on City Conservation Lands would take up to three seasons to complete. Work on upgrading these trailheads would begin in 2020 and will focus on standardizing and posting accurate signage and updating amenities at secondary and local access points. More complex upgrades ie. trail map design and install, kiosk construction and trail reroutes will take longer to implement. Anticipated completion of all trailhead upgrades would be summer 2022.

**Upgrade existing primary, secondary and local access points, Estimated Project Budget:** this budget is based on real costs from similar projects implemented at Missoula trailheads over the past 10 years. Completion of the Conservation Lands Trail head inventory and condition assessment in Winter 2019 will provide exact quantities for additions and upgrades of infrastructure (ie: signs, kiosks, trail maps, trash cans, mutt-mitts, fences, parking).

Activity	Average Costs	Funding Source
Upgrade of existing Primary and Secondary Trailheads to meet City standards and ordinances	\$165,000.00	Open Space Bond Grants & Donations
Supplies and Materials for upgrade of local access points	\$12,000	Conservation Mil Levy & Msla Park District
Labor & equipment costs for coordination and install limited trailhead infrastructure at primary & secondary Trailheads and all local access points.	\$86,000	Conservation Mil Levy & Msla Park District
<b>Estimated Total Project Cost</b>	<b>\$263,000</b>	

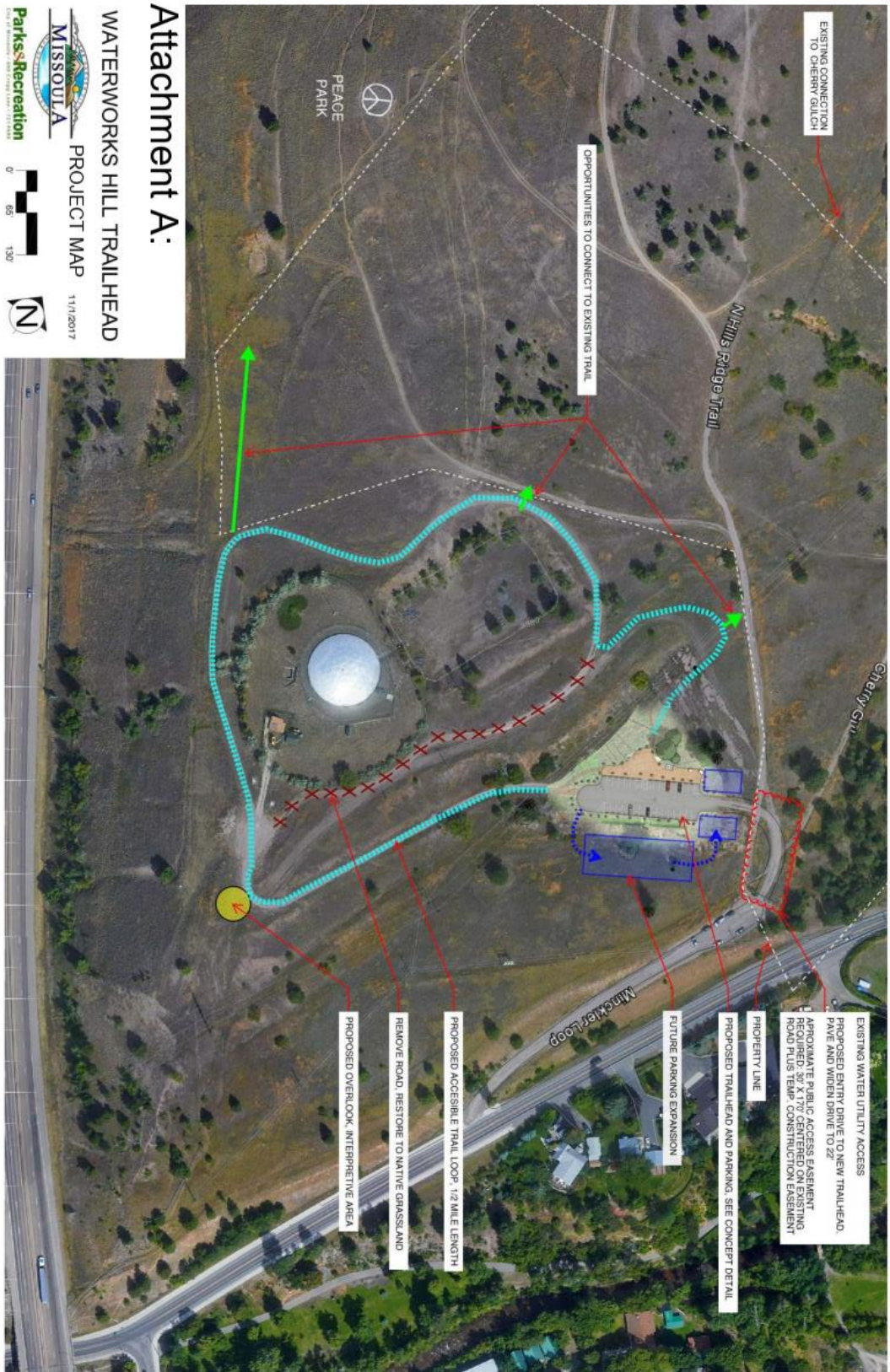
#### SUPPORTING DOCUMENTS:

This project is either directly or indirectly supported by the following community plans:

- 2004 Missoula's Master Park Plan  
<https://www.ci.missoula.mt.us/DocumentCenter/View/776/May-2004-Final-Master-Parks-and-Recreation-Plan-?bidId=>
- 2010 Missoula's Conservation Lands Management Plan, adopted in 2010  
<https://www.ci.missoula.mt.us/DocumentCenter/View/4499/Conservation-Lands-Management-Plan?bidId=>
- 2014 Missoula Parks/Open Space/Trails Asset Management Plan  
<https://www.ci.missoula.mt.us/DocumentCenter/View/24843/2014-02-24-Park-Asset-Management-Plan-as-adopted?bidId=>

**ATTACHMENT A**

Working DRAFT 100119





ATTACHMENT B

WATERWORKS HILL  
TRAILHEAD

MISSOULA, MONTANA

11/07/2017

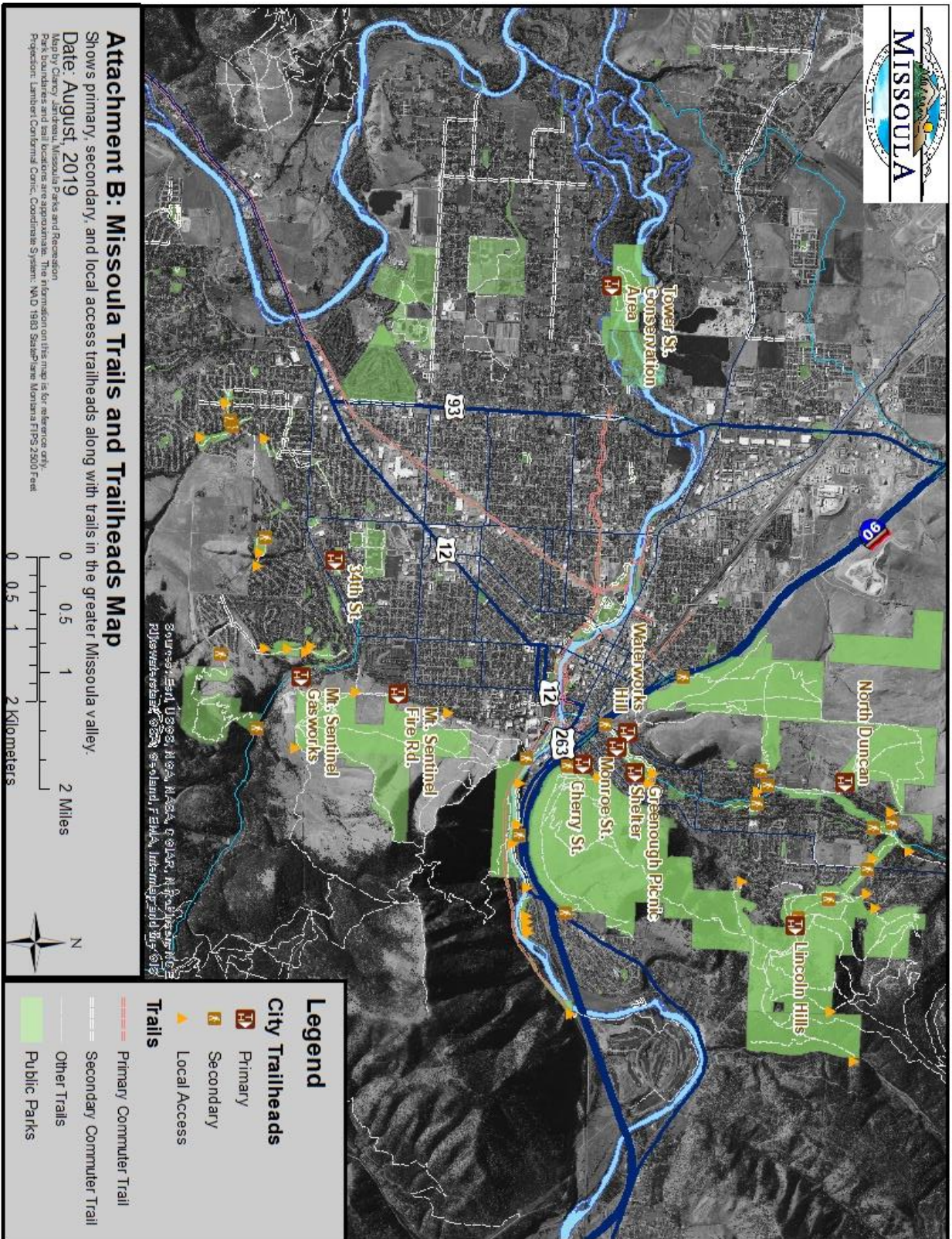
0' 15' 30'



Working



# ATTACHMENT C



**EXHIBIT: \_\_\_\_\_**

**2018 Open Space Bond Capital Improvement INTIAL Undertaking:**  
*Clark Fork River Sustainable Access and Restoration Project*

The 2018 Missoula County Open Space Bond was approved by Missoula County residents during the November 2018 General Election. The bond measure included up to \$1.5million for development of sustainable river access within the Open Space planning boundaries. Population growth within these planning boundaries has greatly impacted our local rivers. This is especially evident through downtown Missoula where bank erosion and destabilization from river access is harming local riparian areas and threatening public infrastructure.

The Clark Fork River Sustainable Access and Restoration Project (CFR Project) involves developing and/or improving multiple hardened river access sites and closing and restoring dozens of unsustainable river access sites on both the North and South banks of the Clark Fork River from Ben Hughes Park to Riverside Park (Attachment A). Significant public scoping has occurred along the majority of this CFR Project area. A preliminary engineering report (Attachment B) was completed within a section of the project area, along the South bank of the Clark Fork River from the Madison St. and Orange St. Bridges.

**PROJECT DEVELOPMENT AND PRIOR PUBLIC PROCESS:**

Following the 2010 removal of the Milltown Dam recreational use of the Clark Fork River through Missoula exploded. Exponential increases in the quantity and erosion severity of user created river access points along this stretch of river was observed. A 2014 inventory of these access points along 2/3<sup>rd</sup> mi. of the south bank of the Clark Fork River recorded:

- 34 separate user-made access sites
- 275 feet of eroded bank
- 7 user-made access points classified as severely eroded and threatening public infrastructure (Milwaukee Commuter trail)

In 2014, a partnership was formed between the Missoula Parks and Recreation Department, the Clark Fork Coalition, and the Missoula Water Quality District to find solutions for this problem. In an effort to understand how river recreationists use the Clark Fork River in downtown Missoula partners mobilized an army of volunteers to collect detailed information on the amount and type of recreational use and issued 4-page surveys to both river and trail users. These data, provided necessary information to begin developing plans to prevent further erosion and maintain recreational use capacity. Key findings from this statistically valid survey include:

- An average of 34 river users/hour (high of 76.6/hr.) floating past the Madison Street bridge during the survey period
- 70% of river use comprised by single-person tubers
- An estimated 14,200 tubers using the river between 2pm and 7pm from June 1-August 31
- High level of support for addressing erosion problems while maintaining river access by both trail and river users
- Documented multiple types of public use necessitating a variety of river access designs

Between 2015 and 2018, partners worked to develop a project to restore damaged riverbanks while providing appropriate hardened river access points. Multiple stakeholder meetings including representatives from every governmental land management agency in Missoula, City and County



engineers, recreational and environmental and educational non-profits, The University of Montana and local business leaders were held to gain support and feedback on the project. A \$50,000 Renewable Resource Grant from the State of Montana was received to develop a preliminary engineering report to build sustainable access points and restore over 400 linear feet of eroding bank (Attachment B) along the South bank of the Clark Fork River between the Madison St. and Orange St. bridges (a.k.a The South Bank River access and Restoration Project).

In 2017, momentum from this project fueled the development of the Three Rivers Collaborative, a partnership between local and regional non-profits, State & Federal & Local governmental agencies, local businesses and community members. This group aims to collaboratively address issues and pursue opportunities for the benefit of Missoula-area Rivers and the people who value them. One of their first actions was to conduct a follow-up river use survey to the 2015 River Survey. Leveraging volunteer networks from across the groups, river use counts were conducted at four different sites including repeated counts at Madison Street Bridge. Key results at Madison Street Bridge from 2018 include:

- An average of 58.5 river users/hour (high of 174.7/hr.) floating under the Madison St. bridge during the survey period
- 66% of river use comprised by single-person tubers
- 73% users starting their float upstream of Madison Street and ending their float somewhere downstream, versus starting or ending at the Madison Street bridge

On February 21<sup>st</sup>, 2019 over 120 people attended a public open house held by the Three Rivers Collaborative to voice opinions about river management priorities. Results from that open house recognized the “South Bank River Access and Restoration Project” as a critical need to protect the Clark Fork River and strongly supported inclusion of the North bank of the river in the project. Based on the results of that public open house project partners (Missoula Parks & Recreation, The Clark Fork Coalition and The Missoula Water Quality District) decided to expand the South Bank River Access and Restoration Project to include the entire stretch of the Clark Fork River, creating the Clark Fork River Sustainable Access and Restoration Project (Attachment A) described in this document. Relocating approximately ¼ mi. of the Milwaukee trail on the South bank of the Clark Fork River, to increase riparian buffers and to prevent undermining of the trail by bank destabilization, is also a component of this project.

#### **PROJECT BUDGET:**

A multitude of funding opportunities exist for riparian restoration projects and river access. An allocation of up to \$1.5 million in 2018 Open Space Bond funding was identified as eligible for use to improve local river access and riparian restoration. The goal of City project managers is to leverage 2018 Open Space bond money through partnerships, grants, donations and other funding mechanisms to do over \$3 million in river access and riparian restoration. The CFR project is a large undertaking, which will involve several phases and additional public process during project development. This initial request will fund project development, engineering, permitting and public process.

**FIGURE 1, Initial 2018 Open Space Bond request for the Clark Fork River Access and Restoration Project:** these figures are based on engineering and permitting estimates for similar work within the project area. Actual costs for engineering and permitting may vary depending on results of public process and final project designs.



<b>Fig 1: CLARK FORK RIVER ACCESS PHASE 1 2019 OPEN SPACE BOND REQUEST AND ITINERARY</b>		
<b>Activities</b>	<b>Average Costs</b>	<b>Funding Source</b>
<b>Survey of user-made access points within project area, partnership building, fundraising, public process</b>	\$25,000.00	Project Coordinator's In-kind labor
<b>Project Design and formal public process</b>	\$45,000.00	2018 Open Space Bond
<b>Engineering and permitting</b>	\$180,000.00	2018 Open Space Bond
<b><i>Estimated Initial Project Cost</i></b>	<b><i>\$250, 000</i></b>	

As described earlier in this document, local support for the CFR Project has been steadily growing for years and strong partnerships with local government agencies, non-profits and businesses already exist. Project coordinators intend to seek grants, partnerships, donations for implementation/construction as the CFR Project progresses through design/engineering/permitting. The following table represents potential phases for implementation of this project with an estimate of approximate costs. Actual costs for construction phases will not be known until Phase 1 engineering is complete. A separate Open Space Undertaking project proposal for project implementation (phases 2 &3) will be submitted at a later date.

**FIGURES 2 & 3, Approximate scope and estimated costs for potential phases of the Clark Fork River Access and Restoration Project:** these figures are based on construction estimates for similar work within the project area. Accurate costs for construction, permitting and project oversight; as well as specific locations for access points and timeframe for implementation of Phase 2 & 3 will not be known until completion of Phase 1. Accurate cost estimates for engineering, permitting and implementing this project may vary depending on results of public process and final project designs.

<b>Fig. 2: CLARK FORK RIVER ACCESS POTENTIAL PHASE 2 (years 2020-2022)</b>		
<b><u>Activity/Item</u></b>	<b><u>Approximate Cost</u></b>	<b><u>Potential Funding Sources</u></b>
<b>Project coordination</b>	\$45,000	Open Space Bond and City In-kind Labor
<b>Up to 4 Major River Access Points</b>	\$1,000,000	Open Space Bond, Donations, Grants, C&S Mil Levy, Urban Renewable Dist.
<b>Up to 10 Minor Access Points</b>	\$250,000	Open Space Bond, Donations, Grants, C&S Mil Levy, Urban Renewable Dist.

Contingency and incidentals (30% of above)	\$388,500	Open Space Bond, Donations, Grants, C&S Mil Levy, Urban Renewable Dist.
Relocation of 1/2 mi. of the Milwaukee trail	\$180,000	City leverage
<b>TOTAL:</b>	<b>\$1,863,500</b>	

<b>Fig 3: CLARK FORK RIVER ACCESS RESTORATION POTENTIAL PHASE 3 (years 2021-2024)</b>		
<b><u>Activity/Item</u></b>	<b><u>Approximate Cost</u></b>	<b><u>Potential Funding Sources</u></b>
Project coordination	\$22,000	Open Space Bond and City In-kind Labor
Restore, Replant and Maintain closure on up to 70 user access points	\$210,000	Donations, Grants, C&S Mil Levy
Volunteer coordination and onsite education	\$30,000	Open Space Bond, Donations, Grants, C&S Mil Levy, Urban Renewable Dist.
Contingency and Incidentals (30% of the above)	\$78,600	Open Space Bond, Donations, Grants, C&S Mil Levy, Urban Renewable Dist.
<b>TOTAL:</b>	<b>\$340,600</b>	

#### **SUPPORTING DOCUMENTS:**

This project is either directly or indirectly supported by the following community plans:

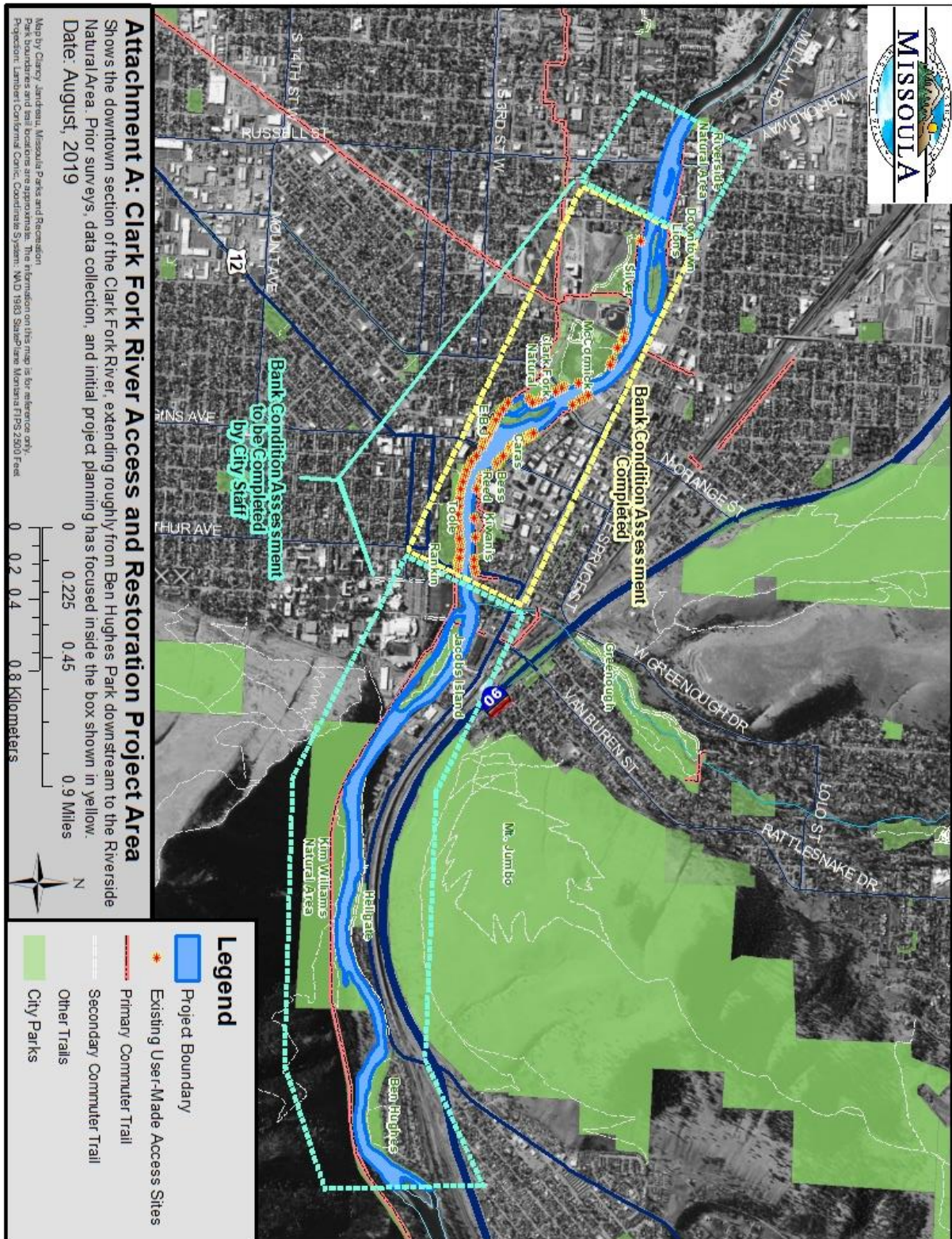
- 2004 Missoula's Master Park Plan  
<https://www.ci.missoula.mt.us/DocumentCenter/View/776/May-2004-Final-Master-Parks-and-Recreation-Plan?bidId=>
- 2006 Missoula's Open Space Plan, adopted in 2006  
<https://www.ci.missoula.mt.us/DocumentCenter/View/652/2006-Updated-Open-Space-Plan?bidId=>
- 2010 Missoula's Conservation Lands Management Plan, adopted in 2010  
<https://www.ci.missoula.mt.us/DocumentCenter/View/4499/Conservation-Lands-Management-Plan?bidId=>
- 2014 Missoula Parks/Open Space/Trails Asset Management Plan  
<https://www.ci.missoula.mt.us/DocumentCenter/View/24843/2014-02-24-Park-Asset-Management-Plan-as-adopted?bidId=>
- 2018 Missoula's Downtown Business Improvement Plan, *currently under development*  
<https://missouladowntownmasterplan.com/resources-1>

Additionally, a recent statistically valid survey across Missoula County (2018 Missoula City/County Park, Trails and Open Space survey.... <https://www.ci.missoula.mt.us/DocumentCenter/View/44212/2018->

[PROST-Survey-Results-PDF?bidId=](#)) showed strong public support for habitat protection and increased recreation opportunities including increased river access.

Working DRAFT 10 01 2019

# ATTACHMENT A





## **EXHIBIT:**

### **2018 Open Space Bond Capital Improvement Initial Undertaking** *Open Space Reforestation Project*

The 2018 Missoula County Open Space Bond was approved by Missoula County residents during the November 2018 General Election. The bond measure included \$250,000 for tree planting within city parks and open space areas.

Open Space bond funds are allocated to plant trees in parks and open space areas where none existed and to renew tree plantings in parks where existing trees have reached the end of their useful lifespan. Approximately 456 new trees will be planted and 65 aging trees will be removed. Irrigation systems along the Bitterroot Trail and in Bellevue Park are included in this undertaking.

Trees will be planted in 15 parks and along 2 greenways (see Map in Attachment A).

#### **PROJECT DEVELOPMENT AND PRIOR PUBLIC PROCESS:**

##### **UF Master Plan**

The urban forest master planning process started in December 2013, with authorization from City Council to expend \$9,000 in funds originally allocated for contractual tree care work. Work on the plan started in January of 2014. Over the next 15 months, a cadre of six core members developed the master plan. The six members included:

- Christopher Boza, City Forester City of Missoula
- Margie Ewing, Regional Urban & Community Forestry Program Manager US Forest Service
- Christopher Gray, Arborist Technician, City of Missoula
- Jamie Kirby, Urban Forester Montana Department of Natural Resources and Conservation
- Karen Sippy, Executive Director Trees for Missoula
- Susan Ridgeway, Board Member Missoula Park and Recreation Board

During the 15 months, the members conducted several activities to obtain foundational information for the management plan. These activities included:

- Historical research
- Peer city reviews
- Statistically valid public interest survey conducted by UM Institute for Tourism and Recreation Research
- Neighborhood Council meetings
- Listening sessions with over 90 stakeholder groups
- Follow-up SWOT sessions with the stakeholder groups
- Public workshops
- I-Tree analysis
- Internal staff reviews
- Park Board reviews
- Park and Conservation review
- Public hearings

Work on the management plan culminated with Missoula City Council adoption on April 20, 2015.

##### **Neighborhood Planting Plans**

Consistent with the implementation strategies of the Urban Forest Management Plan, staff began working with neighborhood councils to develop planting plans for specific neighborhoods. Between December 2015 and April 2017, planting plans were developed for the following neighborhoods:

- Riverfront
- University
- Rose Park
- Franklin to the Fort
- Southgate Triangle
- South 39<sup>th</sup> Street
- Moose Can Gully
- Fairviews/Pattee Canyon

Key implementation strategies identified in the management plan supporting this undertaking are shown below.

#### Risk Management Strategies

- Establish, adopt and implement specific criteria for tree removal. The criteria for tree removal typically include the following criteria:
- The tree is dead. The threshold for removal is typically 50 percent or greater of the canopy dead. The location of deadwood removal cuts, and the impact to the overall tree structure, must be considered in the decision to remove a tree.
- The tree is dying.
- The tree is diseased.
- The tree is structurally unsound. Structurally unsound trees that cannot be corrected by traditional pruning techniques are removed. Advanced tree preservation techniques such as cabling and bracing are reserved for high value trees.
- The tree inhibits all economically viable uses of private property.

#### Planting Strategies

- Develop and adopt tree planting standards to ensure tree installation is consistent, whether the installation is done through the Parks and Recreation Department, other city agencies or the private sector. The planting standards will be based upon the most current ANSI standards and ISA BMPs. Planting standards not only include the tree stock, but also include the site preparation. Industry BMPs call out specific soil volumes for Class I (Small) through Class III (Large) trees. Trees provided for installation by other city agencies or the private sector must meet the current ANSI Z60.1 standards and the ISA BMPs for tree stock.
- Select trees for specific sites based upon the site conditions and constraints. A tree that is not suitable for a specific site will not provide maximum, long-term benefits to the community. The approved tree list should provide all of the pertinent information needed to select a tree appropriate to specific site. Class II and Class III trees shall not be planted directly under electrical distribution lines, or where root growing medium is restricted.

#### Resource Strategies

- Incorporate volunteer efforts into tree care operations. Typical activities include the following:
  - Arbor Day activities
  - Educational outreach
  - K-12 educational programs
  - Tree planting
  - Young tree pruning
- Leverage city funds with grant and foundation funding opportunities. Where feasible, connect grant funded programs with volunteer programs.
- Use local technical, professional and scholastic expertise for urban forest problem solving.
- Encourage Neighborhood Council participation in urban forestry programs affecting the various neighborhoods.

## ESTIMATED BUDGET AND Project Implimentation

A multitude of funding opportunities exist for reforestation and hazard tree mitigation projects. An allocation of up to \$250,000 in 2018 Open Space Bond funding was identified as eligible for use to improve Missoula's Urban Forest canopy and reduce the risk that potentially hazardous trees pose especially in Missoula's public spaces. The goal of City project managers is to leverage 2018 Open Space bond money through partnerships, grants, donations and other funding mechanisms to do over a half of a million dollars in reforestation and hazard mitigation. The reforestation of Missoula's Urban Forest is a large undertaking, which will involve several phases and additional public process during the project development. This initial request will fund up to 650 new trees within public spaces and reduce the level of risk, by the removal of high risk trees.

Trees for Missoula, Urban Forestry's active partner and volunteer group will be integral for volunteer planting hours and labor, grants and potential funding sources. Volunteer and staff in-kind labor will be a key aspect of reforesting Missoula's Urban Forest and increasing the aging tree canopy with new tree sites. Volunteers will be planting bare root trees, installing deer protection and helping to educate citizens on the importance of reforestation during planting projects.

Urban Forestry staff will be responsible for installing and maintaining water bladders including weekly visits to each tree to fill water bladders. Urban forestry staff will also be responsible for volunteer tracking, training and supervision during projects and site inspections after project completion. Project design, management and tracking will also be conducted by Urban Forestry staff.

### Funding Strategies

- Use the existing park district as a revenue source. The park district has additional assessment capacity that can be used for urban forest maintenance activities. While not enough to fund the entire operation, it can be used as seed and/or match money for alternative funding sources.
- Use grants and partnerships that are available for tree planting.

**Initial 2018 Open Space Bond request for Reforestation and High Risk Tree Removal Project:** these figures are based on engineering and permitting estimates for similar work within the project area. Actual costs for nursery stock trees, contract costs, staff and volunteer hours, deer protection fencing, water bladders and water truck costs may vary depending on results of final project designs. Additional sites and parks have been identified based on irrigation systems, nursery stock and planting cost estimates, and Master Park Planning documents.

Activity	Estimated Quantities	Estimated Costs	Funding Source
Total Trees Planted	457-650	\$250,000.00	Open Space Bond
Total Trees Removed	65	\$69,800.00	Grants, Partnerships and Park District
Irrigation Installation	2	\$49,900.00	Grants, Partnerships and Park District
Project Design, management, coordination and replanting hours	2,500	\$40,000.00	In-kind labor both staff and volunteer hours
Total Cost w/ Irrigation		\$409,700.00	

# INDIVIDUAL SITE COST ESTIMATES

Park Site	Neighborhood	Estimated Tree Units	Unit Price	Estimated Cost	Removals	Unit Price	Cost	Irrigation	
								MWC	Well
Pleasantview	Cpt. John Mullan	50	\$515.00	\$25,750.00	0	\$ -	\$ -		
Northside	Northside	7	\$515.00	\$3605.00	4	\$1,000.00	\$4,000.00		
Little McCormick	Westside	10	\$515.00	\$5,150.00	3	\$900.00	\$2,700.00		
McCormick	Riverfront	30	\$515.00	\$15,450.00	15	\$1,100.00	\$16,500.00		
Sacajawea	Rose Park	15	\$515.00	\$7,725.00	11	\$1,200.00	\$13,200.00		
Bonner	University	15	\$515.00	\$7,725.00	12	\$1,000.00	\$12,000.00		
Franklin	Franklin to the Fort	15	\$515.00	\$7,725.00	9	\$1,200.00	\$10,800.00		
Bitterroot Trail - S	Franklin to the Fort	175	\$515.00	\$90,125.00	0	\$ -	\$ -	\$25,000.00	\$34,000.00
Milwaukee Trail - W	Riverfront	30	\$515.00	\$15,450.00	0	\$ -	\$ -		
Kiwanis	Heart of Missoula	35	\$515.00	\$18,025.00	7	\$900.00	\$6,300.00		
Anderson	Rose Park	5	\$515.00	\$2,575.00	3	\$1,100.00	\$3,300.00		
Pheasant Run	Moose Can Gully	4	\$515.00	\$2,060.00	0	\$ -	\$ -		
Rose Park	Rose Park	4	\$515.00	\$2,060.00	0	\$ -	\$ -		
Honeysuckle East and West/ South Hills Trail	S 39th St	70	\$515.00	\$36,050.00	0	\$ -	\$ -		
Bellevue	Southgate Triangle	20	\$515.00	\$10,300.00	1	\$1,000.00	\$1,000.00	\$15,900.00	\$15,900.00
		485		\$249,775.00	65		\$69,800.00	\$40,900.00	\$49,900.00

## ALTERNATE/ADDITIONAL LOCATIONS



Park Site	Neighborhood	Tree Units	Unit Price	Cost
Elms	Louis and Clark	8	\$515.00	\$4,120.00
Garland	Moose Can Gully	8	\$515.00	\$4,120.00
Gregory	Lower Rattlesnake	10	\$515.00	\$5,150.00
Lafray	River Road	5	\$515.00	\$2,575.00
Lester	Louis and Clark	10	\$515.00	\$5,150.00
Marilyn	Miller Creek	5	\$515.00	\$2,575.00
McLeod	Rose Park	5	\$515.00	\$2,575.00
Penland	Farviews/Pattee Canyon	10	\$515.00	\$5,150.00
Pineview	Upper Rattlesnake	6	\$515.00	\$3,090.00
Rainbow	Miller Creek	20	\$515.00	\$10,300.00
River Pines	Moose Can Gully	5	\$515.00	\$2,575.00
Russell Park West	Southgate Triangle	5	\$515.00	\$2,575.00
Skyview	Moose Can Gully	15	\$515.00	\$7,725.00
Southside Lions	Rose Park	5	\$515.00	\$2,575.00
Wapakiya	S. 39th St	15	\$515.00	\$7,725.00
Whitaker	Farviews/Pattee Canyon	15	\$515.00	\$7,725.00
Willow Wood	S. 39th St	5	\$515.00	\$2,575.00
		152		\$78,280.00

As described earlier in this document, local support for the reforestation of Missoula's Urban Forest and tree risk reduction projects have been steadily growing for years and strong partnerships with local government agencies, non-profits and businesses already exist. Project coordinators intend to seek grants, partnerships, donations for implementation/construction as the project progresses.

This project will be implemented over a period of three to four years. The first year will be the smallest planting plan consisting of a minimum of one hundred bare root trees. The remainder of the plantings, tree removals and irrigation installations will occur in three phases.

The first phase of plantings is projected to occur in the Fall of 2020. These bare root trees will be grown in the existing gravel bed at Missoula's wastewater treatment facility. The trees will be planted by volunteers in irrigated park land.

The scope of work for the remaining trees will be contingent on nursery stock, contract costs for irrigation installation and potentially tree removal. In kind funding will be a function of the urban forestry budget, staffing and volunteer hours.

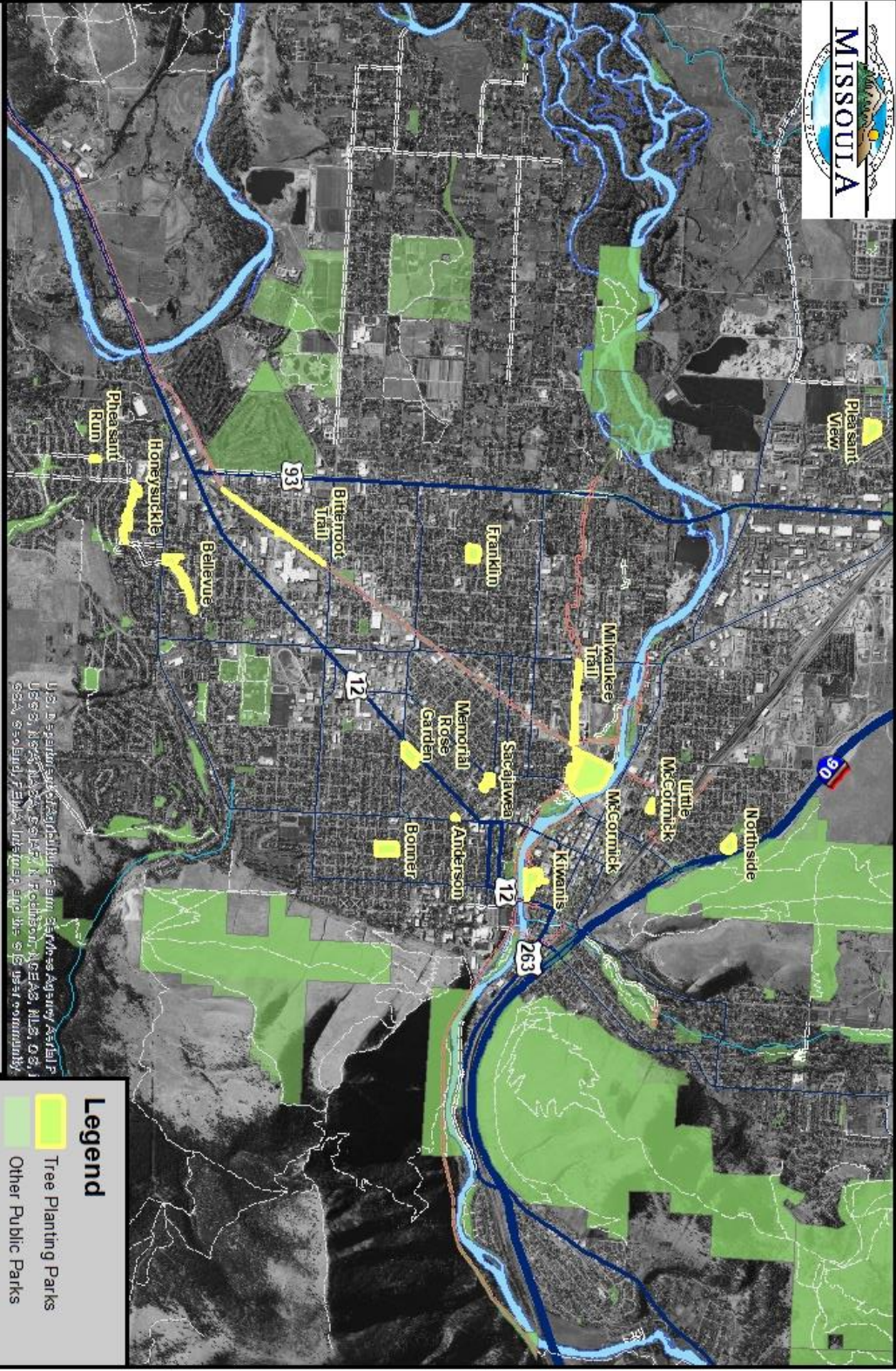
#### **SUPPORTING DOCUMENTS:**

This project is either directly or indirectly supported by the following community plans:

- 2004 Missoula's Master Park Plan ([Add Link](#))
- 2006 Missoula's Open Space Plan, adopted in 2006 ([Add Link](#))
- 2010 Missoula's Conservation Lands Management Plan, adopted in 2010 ([Add link](#))
- 2014 Missoula Parks/Open Space/Trails Asset Management Plan ([ADD LINK?](#))
- 2015 Missoula's Urban Forest Management Plan ([Add Link](#))
- 2018 Missoula's Downtown Business Improvement Plan, *currently under development* ([Add link](#))
- Missoula's Parks and Recreation Master Park Plan ([Add Link](#))

**ATTACHMENT A**

Working DRAFT 10 03 19



**Attachment A: Open Space Reforestation Project Map**

Shows recommended parks and trails for tree plantings.

Date: August, 2019

Map by Casey Jandreau, Missoula Parks and Recreation

Park boundaries and trail locations are approximate. The information on this map is for reference only.

Projection: Lambert Conformal Conic, Coordinate System: NAD 1983 StatePlane Montana FIPS 2500 Feet

0 0.45 0.9 1.8 Miles

0 0.3750.75 1.5 Kilometers

N

**Legend**

- Tree Planting Parks
- Other Public Parks

**Trails**

- Primary Commuter Trail
- Secondary Commuter Trail
- Other Trails

# 2018 Open Space Bond City-County Interlocal Agreement and Undertakings

Missoula City Council  
Parks & Conservation Committee  
September 25, 2019

---

Presented by Morgan Valliant, Conservation Lands Manager



# OS Bond Spending Parameters

*As defined by the 2017 MCA 76-6 sections 101-106*

---

- Provide for the preservation of native plants or animals, biotic communities, or geological or geographical formations of scientific, aesthetic or educational interest.
- Acquire by purchase, gift, devise, bequest, or grant title to or (through official designation) any interests or rights in real property, including lands and water, that will provide a means for the preservation or provision of significant Open-Space land...
- OS land is any land preserved or provided for: park or recreational purposes, natural resources, historic or scenic purposes, or for assisting in the shaping of the character, direction and timing of community development
- Making improvements and/or developing comprehensive plans for lands acquired or designated as open space that are accessible to the public;
- ....Preform comprehensive planning for the urban area.....Funds may be appropriated and made available for comprehensive planning. Financial or other assistance from the federal government and any other public or private sources may be accepted and utilized for the planning.
- Comprehensive planning means planning for development including....programming and financing plans for capital improvements; coordination of all related plans and planning activities at both intragovernmental and intergovernmental levels and preparation of regulator and admin. Measures in support of the foregoing.

# Parks, Recreation, Trails, and Open Space Needs Assessment

---

## 2018 Household Survey Overview

- ❑ In 2018 the City and County jointly conducted a statistically valid survey of households in Missoula County
- ❑ The goal was to determine what Missoula County residents most value regarding parks, recreation, trails, and open space
- ❑ Results help guide Open Space Planning

# Parks, Recreation, Trails, and Open Space Needs Assessment

---

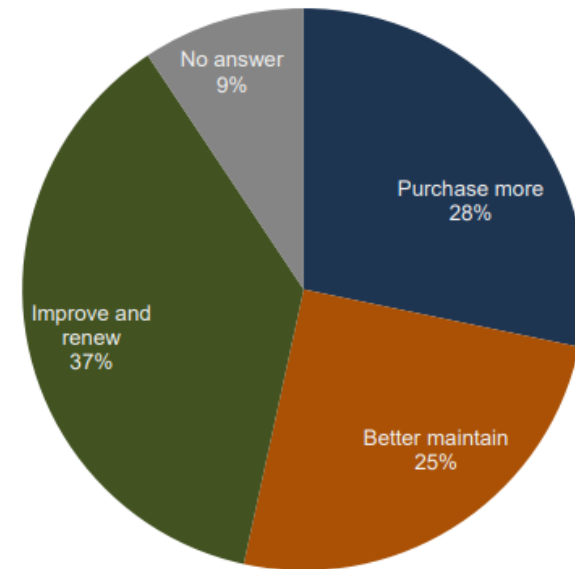
## Key Results

Support for Acquisition, Maintenance, or Improvement

### Top-Five Desired Improvements

---

1. Natural areas/wildlife habitat
2. Dirt trails for hiking, biking, and running
3. River access sites
4. Paved trails for walking and biking
5. Outdoor/environmental education



# City “Undertakings”

(Figures from Council Adopted Resolution 8276 - June 25<sup>th</sup>, 2018)

---

## **Acquisitions Minimum of \$3M**

- Purchase new anchor areas, corridors and urban greenspace as guided by the 2019 Open Space Plan.

## **Capital Projects:**

### **River Restoration and Access UP TO \$1.5M**

- Mitigate impacts and provide sustainable access in the urban area

### **Trails Up to \$2.25M**

- Emphasis on stewardship of existing corridors providing essential links between urban area and open space/conservation lands

### **Reforestation of Open Space Lands UP TO \$250,000**

- Renew or establish tree canopy lost to aging/dying trees on open-space lands

### **Conservation Lands Trails and Trailheads UP TO \$500,000**

- Restore or rebuild trails and trailheads and standardize signage to maximize recreational potential while limiting impacts



# Initial 2019 City O.S. bond capital project requests

---

## **Clark Fork River Sustainable Access and Restoration PHASE 1**

- Mitigate impacts and provide sustainable access in the urban area

## **Reforestation of Open Space Lands**

- Renew or establish tree canopy lost to aging/dying trees on open-space lands

## **Conservation Lands Trailheads**

- Waterworks Hill Trailhead
- Conservation Lands Trailhead Upgrades



# Clark Fork River Sustainable Access and Restoration Project



90 Documented  
Access Points



Over 630 Feet of  
Eroded River Bank



	# of Access Points	Linear Feet of Erosion
South Bank	48	361
North Bank	32	272
<b>Total</b>	<b>90</b>	<b>633</b>





BRIDGE ACCESS

GRAVEL/COBBLE BEACH

ROCK TERRACE

STAIR ACCESS





# Clark Fork River Sustainable Access and Restoration Project

Develop and/or improve multiple hardened river access sites and close and restore dozens of unsustainable river access sites on both the North and South banks of the Clark Fork River from Ben Hughes Park to Riverside Park

## PUBLIC SUPPORT

- 2014 City River User Survey
- 2010 Conservation Lands Management Plan
- 2018 City/County PROST household survey
- Three Rivers Collaborative

## BENEFITS

- decrease proliferation of new user access points
- Restore hundreds of yards eroded riverbanks
- Opportunities to educate the public about responsible river use

## **2019 INITIAL O.S. BOND REQUEST = \$225,000**

Activity	Average Costs	Funding Source
Survey of user-made access points within project area, partnership building, fundraising, public process	\$25,000.00	Project Coordinator's In-kind labor
Project Design and formal public process	\$45,000.00	2018 Open Space Bond
Engineering and permitting	\$180,000.00	2018 Open Space Bond
<b><i>Estimated Initial Project Cost</i></b>	<b><i>\$250,000</i></b>	

# Clark Fork River Sustainable Access and Restoration Project

Approximate scope and estimated costs for potential phases to construct sustainable access points and restore riparian areas along the C.F. River through Missoula. Specific locations for access points and accurate cost estimates for implementation may vary depending on results from PHASE 1.

*ADDITIONAL O.S. BOND REQUESTS TO HELP FUND IMPLEMENTATION WILL OCCUR AFTER PHASE 1*

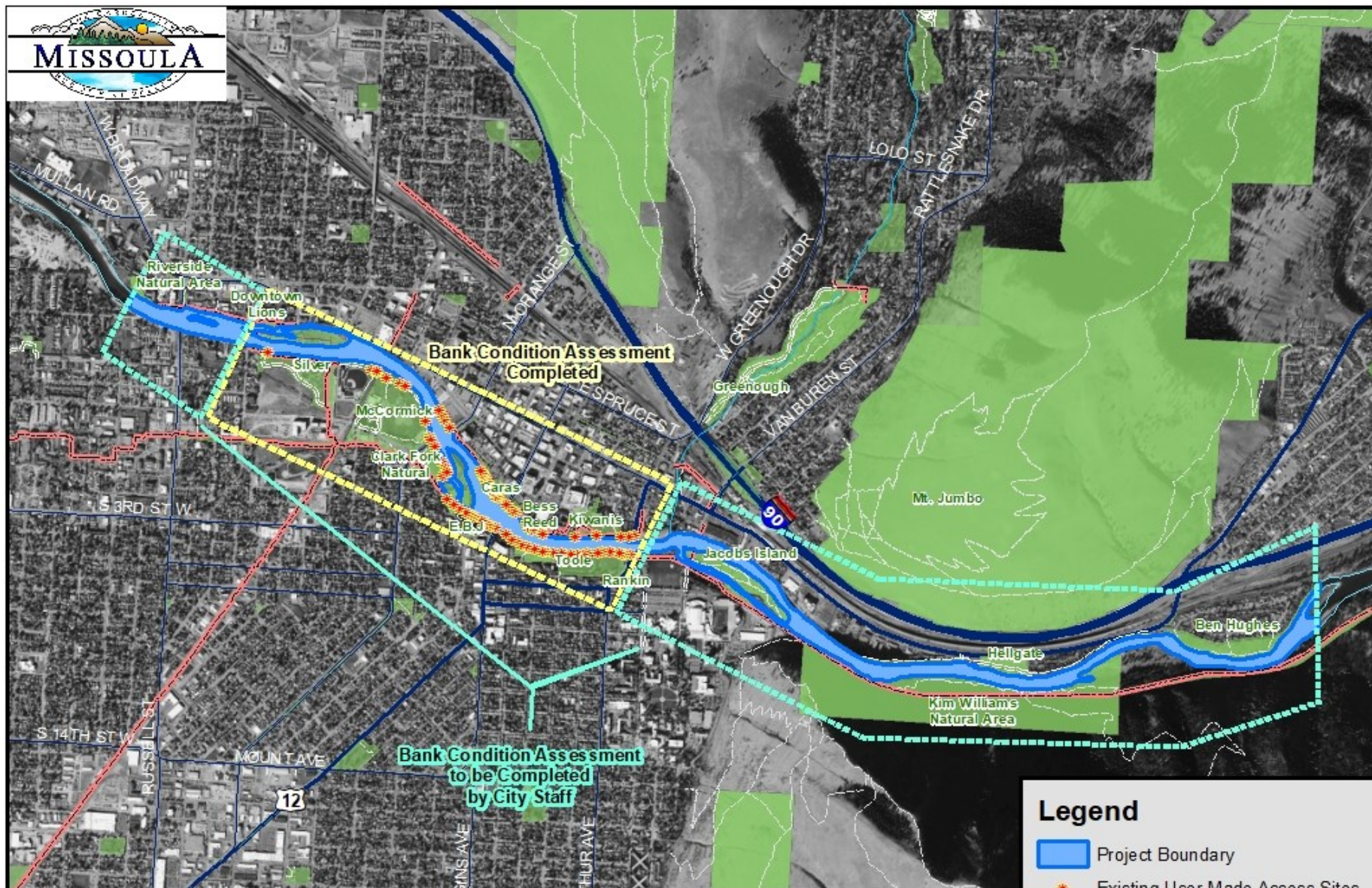
**Fig. 2: CLARK FORK RIVER ACCESS POTENTIAL PHASE 2 (years 2020-2022)**

<u>Activity/Item</u>	<u>Approximate Cost</u>	<u>Potential Funding Sources</u>
Project coordination	\$45,000	Open Space Bond and City In-kind Labor
Up to 4 Major River Access Points	\$1,000,000	Open Space Bond, Donations, Grants, C&S Mil Levy, Urban Renewable Dist.
Up to 10 Minor Access Points	\$250,000	Open Space Bond, Donations, Grants, C&S Mil Levy, Urban Renewable Dist.
Contingency and incidentals (30% of above)	\$388,500	Open Space Bond, Donations, Grants, C&S Mil Levy, Urban Renewable Dist.
Relocation of 1/2 mi. of the Miluakee trail	\$180,000	City leverage
<b>TOTAL:</b>	<b>\$1,863,500</b>	

**Fig 3: CLARK FORK RIVER ACCESS RESTORATION POTENTIAL PHASE 3 (years 2021-2024)**

<u>Activity/Item</u>	<u>Approximate Cost</u>	<u>Potential Funding Sources</u>
Project coordination	\$22,000	Open Space Bond and City In-kind Labor
Restore, Replant and Maintain closure on up to 70 user access points	\$210,000	Donations, Grants, C&S Mil Levy
Volunteer coordination and onsite education	\$30,000	Open Space Bond, Donations, Grants, C&S Mil Levy, Urban Renewable Dist.
Contingency and Incidentals (30% of the above)	\$78,600	Open Space Bond, Donations, Grants, C&S Mil Levy, Urban Renewable Dist.
<b>TOTAL:</b>	<b>\$340,600</b>	





## Attachment A: Clark Fork River Access and Restoration Project Area

Shows the downtown section of the Clark Fork River, extending roughly from Ben Hughes Park downstream to the Riverside Natural Area. Prior surveys, data collection, and initial project planning has focused inside the box shown in yellow.

Date: August, 2019

Map by Clancy Jandreau, Missoula Parks and Recreation  
Park boundaries and trail locations are approximate. The information on this map is for reference only.  
Projection: Lambert Conformal Conic, Coordinate System: NAD 1983 StatePlane Montana FIPS 2500 Feet

0 0.225 0.45 0.9 Miles

0 0.2 0.4 0.8 Kilometers



### Legend

- Project Boundary
- Existing User-Made Access Sites
- Primary Commuter Trail
- Secondary Commuter Trail
- Other Trails
- City Parks

# Open Space Reforestation Project

Plant 450-650 new trees in at least 15 parks and along two trails and remove approximately 65 ageing trees

## PUBLIC SUPPORT

- Urban Forest Master Plan
- Neighborhood Planting Plans

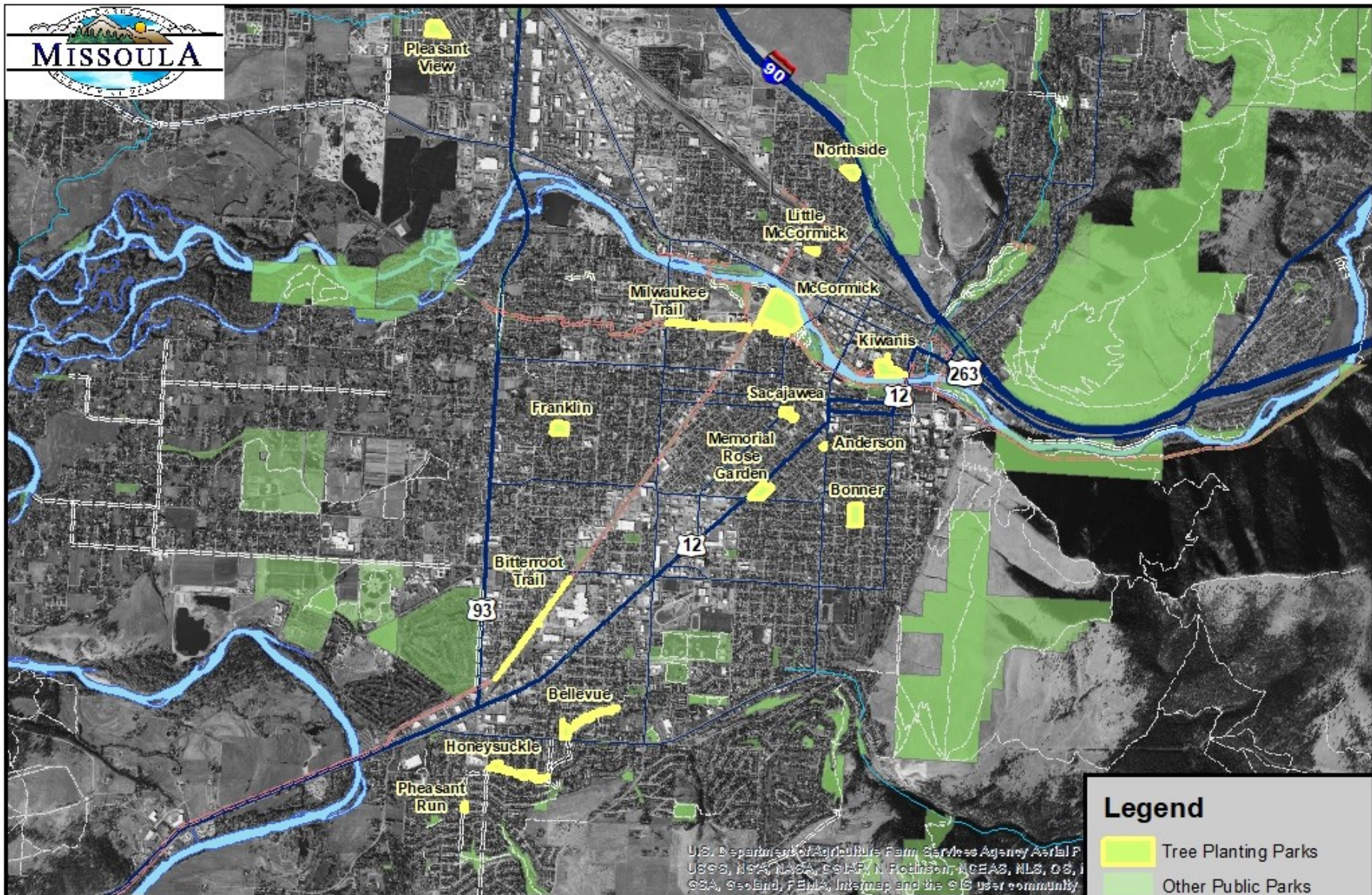
## BENEFITS

- Long-term environmental and public health benefits in the urban core
- Investment of OS bond funds in areas underserved by open space
- Reduced maintenance and liability costs

## BUDGET

Activity	Estimated Quantities	Estimated Costs	Funding Source
Total Trees Planted	457-650	\$250,000.00	Open Space Bond
Total Trees Removed	65	\$69,800.00	Grants, Partnerships and Park District
Irrigation Installation	2	\$49,900.00	Grants, Partnerships and Park District
Project Design, management, coordination and replanting hours	2,500	\$40,000.00	In-kind labor both staff and volunteer hours
Total Cost w/ Irrigation		\$409,700.00	





### Legend

- Tree Planting Parks
- Other Public Parks

### Trails

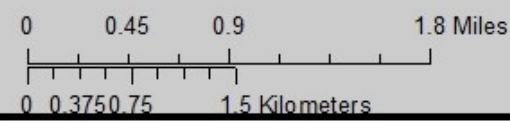
- Primary Commuter Trail
- Secondary Commuter Trail
- Other Trails

## Attachment A: Open Space Reforestation Project Map

Shows recommended parks and trails for tree plantings.

Date: August, 2019

Map by Clancy Jandreau, Missoula Parks and Recreation  
Park boundaries and trail locations are approximate. The information on this map is for reference only.  
Projection: Lambert Conformal Conic, Coordinate System: NAD 1983 StatePlane Montana FIPS 2500 Feet





# Bitterroot Trail Existing Tree Canopy



# Missoula Conservation Lands Trailhead Improvement Projects

---

Projects include: 1) renewing Waterworks Hill Trailhead and building an ADA trail with interpretive education, and 2) upgrading existing primary and secondary trailheads with standardized signs, services, and maps

## PUBLIC SUPPORT

- Conservation Lands Management Plan
- Conservation Lands Advisory Committee
- City/County Household Survey

## BENEFITS

- Meet adopted trailhead standards
- Educate users about responsible recreation, historic human use and conservation efforts
- meet city ordinances and implement uniform rules and regulations

# Missoula Conservation Lands Trailhead Improvement Projects

Projects include: 1) renewing Waterworks Hill Trailhead and building an ADA trail with interpretive education, and 2) upgrading existing primary and secondary trailheads with standardized signs, services, and maps

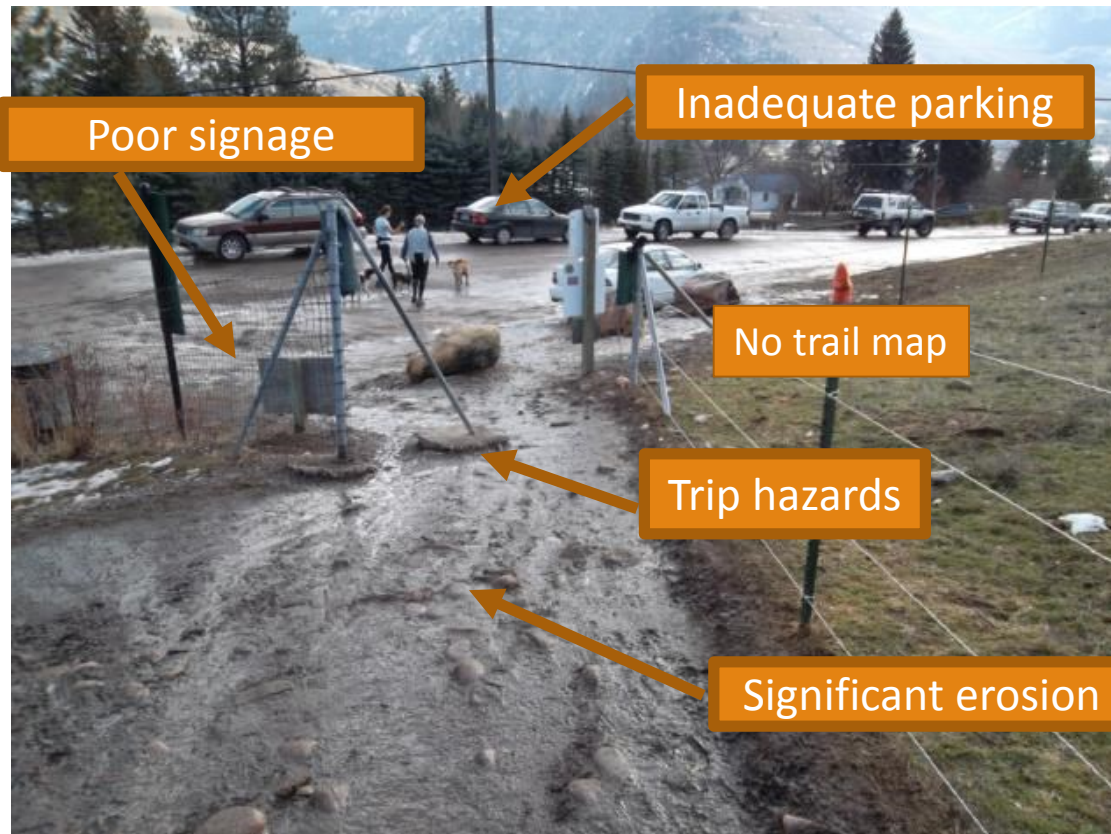
## WATERWORKS TRAILHEAD BUDGET:

Activity	Average Costs	Funding Source
Design/Engineering/permitting/p project oversight	<b>\$135,000.00</b>	Open Space Bond
Access road improvements	\$170,200.00	Msla. Street Dist. Plus private donation
Construction of Parking lot	\$130,500.00	Msla. Water Utility Enterprise fund
Trailhead construction	\$83,000	Conservation Mil Levy, Msla. Water Utility Enterprise fund
ADA loop trail & Overlook	86,500	Conservation Mil Levy, Grants and Donations
<b>Estimated Total Project Cost</b>	<b>\$605,200</b>	

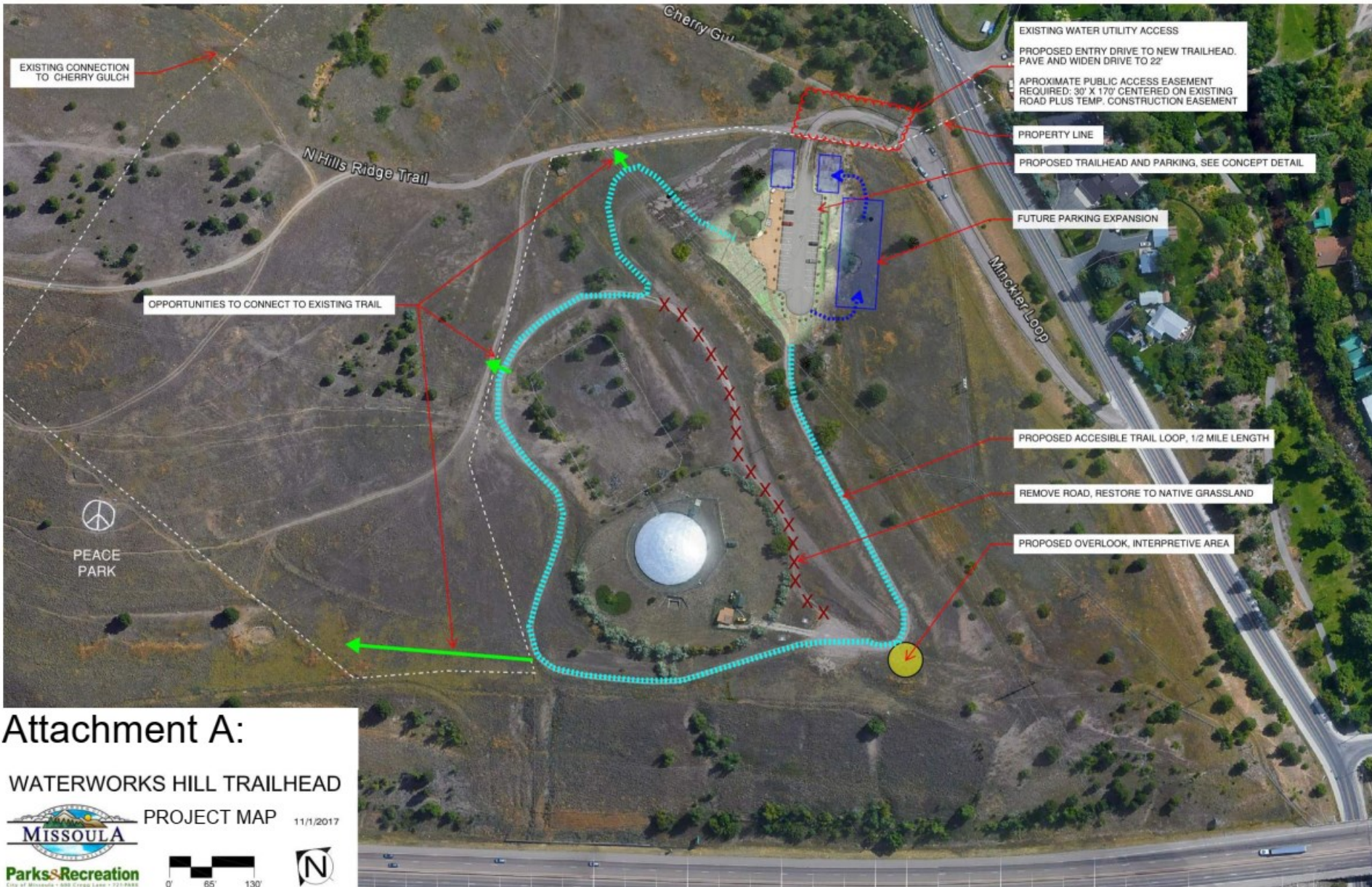
## C.L. TRAILHEAD BUDGET:

Activity	Average Costs	Funding Source
Upgrade of existing Primary and Secondary Trailheads to meet City standards and ordinances	<b>\$165,000.00</b>	Open Space Bond Grants & Donations
Supplies and Materials for upgrade of local access points	\$12,000	Conservation Mil Levy & Msla Park District
Labor & equipment costs for coordination and install limited trailhead infrastructure at primary & secondary Trailheads and all local access points.	\$86,000	Conservation Mil Levy & Msla Park District
<b>Estimated Total Project Cost</b>	<b>\$263,000</b>	

# Water works Hill Trailhead









# WATERWORKS HILL TRAILHEAD

MISSOULA, MONTANA

11/07/2017



# Trail head Upgrades

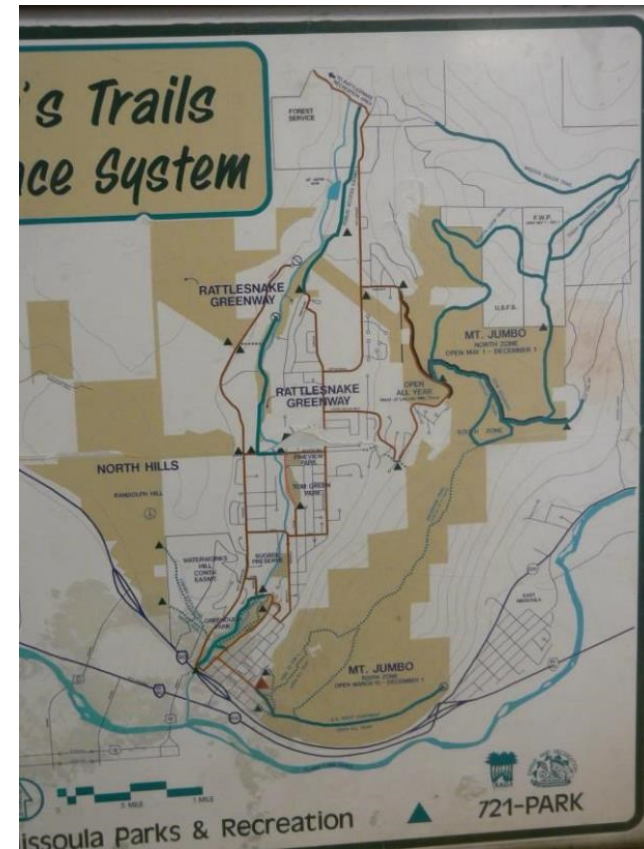
*“Trailheads are the last place where we can manage our users”*

---

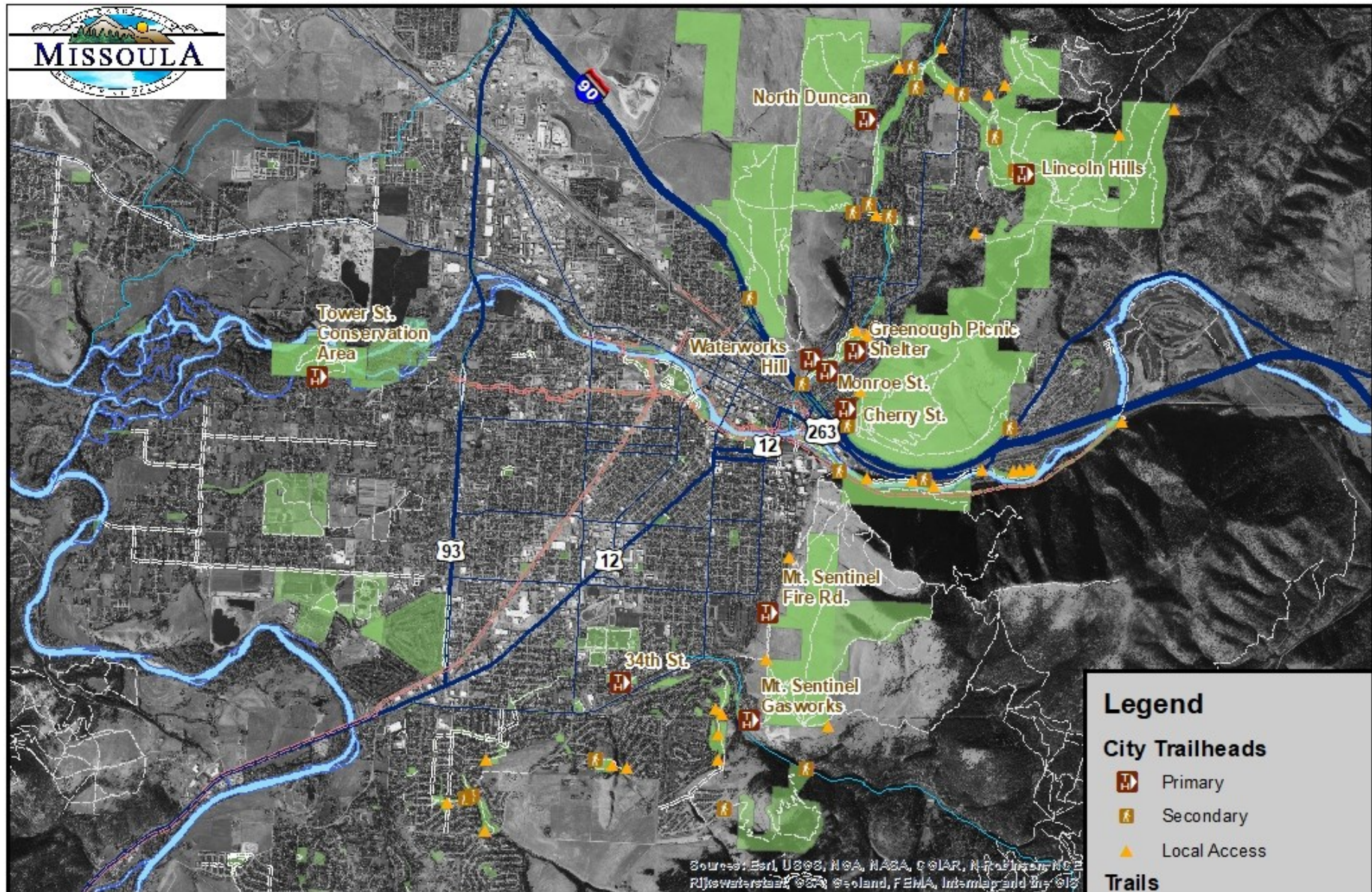
**Primary Trailheads-** *major gateways to our trail system at a minimum provide: kiosk, parking for over 10 cars, trail maps, bike racks, bear can, mutt-mitt, possibly restrooms and picnic facilities*

**Secondary Trailheads-** *A “side entrance” to our trail systems. Less developed with less use than major TH at a min. provide: rules & reg signs, trail maps, parking for 2-10 cars, trash & muttmitt*

**Local Access Points-** *provide neighborhood access or mark ownership boundaries. At a min. provide: rules & reg sign, fencing/access gate may provide: trail map, trash & muttmitt*







# 2019 Open Space Bond Request Summary

---

Project	2019 OS Bond Requests	Anticipated Match/Leverage	Total
CF River Restoration and Access PHASE 1	\$225,000	\$25,000	<b>\$250,000</b>
Reforestation	\$250,000	\$159,700	<b>\$409,700</b>
<b><u>Trailhead Improvements:</u></b>			
Waterworks TH	\$135,000	\$470,000	<b>\$605,000</b>
TH Upgrades	\$165,000	\$98,000	<b>\$263,000</b>
<b>Total</b>	<b>\$775,000</b>	<b>\$752,700</b>	<b>\$1,527,700</b>



## **October 2019**

### **Fall Park Board Staff Report - Developed Parks**

TJ Machado, Park Maintenance Manager

#### **Completed Staff Projects CY 19**

- Re-graded entrance road to Jacob's Island
- MRL art project foundation for "Scratch"
- Rebuilt post and rail fence upper Greenough Parking Lot
- Rebuilt/repaired post and rail fence various Rattlesnake neighborhood parks
- Owner provided items; Benches, Picnic Tables, Trash enclosures, irrigation etc.
- Caras Park restroom painting (interior) in partnership with MDA
- Successfully completed first KABOOM! Playground build project-Rose Park

#### **Current Staff Projects CY 19**

- In kind staff contribution to Cherry Gulch/Greenough bank restoration Project
- Heritage Park improve access entry, add bollard to prevent private vehicles entering park
- Replace fixtures Caras Park restroom
- Playfair Park fence repairs
- Rebuild Rose Park shed
- Fall clean up Ops Yard

#### **Park Asset Management Plan FY19**

- VFD well pump installation Silvers Park (in progress)
- Selective parking lot striping McCormick Parking Lot
- Additional "zero turn" mower purchased

#### **Fort Missoula Regional Park/Athletics CY 19**

- Phase I replacement trees scheduled for first week in October
- Installed Junior Olympic outfield fencing on FMRP and McCormick fields
- Hosted Maggot Fest, Avalanche Rumble tournament, Little league tournament to date
- Installed fence and protective netting around tot-lot playground in softball 5-plex
- Working with Dig Missoula to improve Playfair sand volleyball courts (complete)
- Discussions for a temporary Disc Golf course at FMRP (continued)

### **Herbicides throughout Developed Parks**

With continued research and controversy regarding Glyphosate. Parks Operations continues to seek alternatives, using an Integrated Pest Management approach to weed management. Herbicide applications are only considered when all other options are ineffective at a given location. When an herbicide is deemed appropriate, we attempt to control germination with pre-emergent first. If not applicable, we will use a selective herbicide. Glyphosate based products are a last resort. Park Operations is researching possible new alternative products.

### **2019 Herbicide Free Parks Include**

- Bonner Park
- Boyd Park
- Duncan Dr. Soccer field
- Garland Park
- Greenough Park (Developed Park only)
- Honeysuckle Park
- Jacob's Island
- Lester Park
- Westside Park
- Playfair fields 2 and 7

### **Divisional Goals**

- Continue to develop plans to maintain staff retention and efficiencies
- Work effectively with partnership organizations, such as;
  - Explore improvement options with the Parking Commission for Caras Park entrance
  - Explore opportunities for Community Service Workers and College of Technology working in parks
- Analyze Park Operation teams to ensure efficient delivery of services to customers, take action where necessary









# MISSOULA PARKS AND RECREATION

2019 Annual Recreation  
Program Report





# JR. PLAYMAKERS YOUTH SPORTS



- 145 Participants!
- Classes were offered year round on Wednesday and Friday's at McCormick Park and City Life Community Center
- Field trips to different local organizations; Glacier ice rink, Freestone climbing gym, Roots Acro Sports Center, Peaceful Heart Yoga and many more!!

# TINY AND SUPER SPROUTS 2019





**Spring and Fall Soccer:**  
130 participants  
**Basketball:** 165 parks  
and rec participants  
200 Kiwanis participants  
**Ultimate Frisbee:** 10  
participants  
**Flag Football:** 450  
participants and 65  
volunteer coaches





- \*Over 40 local organizations participated
- \*Free lunch for all provided by the Missoula Food Bank
- \*Live entertainment by The Whizpops, Cowboy Andy and the Salamanders, Childbloom Guitar Program, and an interactive drum circle

# 25<sup>TH</sup> ANNUAL KIDS FEST

SPORTS & WELLNESS  
2019 Annual Report





# Special Events



# Camps.....



**4,087 Participants**

**137 Camps**

**65 Staff**

**11 Weeks**

**1 Million Epic Opportunities**



# DISCOVERY



# PARTNERSHIPS



# PARK BASED



# Russell Afterschool Program



# Afterschool Program



Pick up at 6 Schools  
Transport to Nordic Skiing  
and ZTD

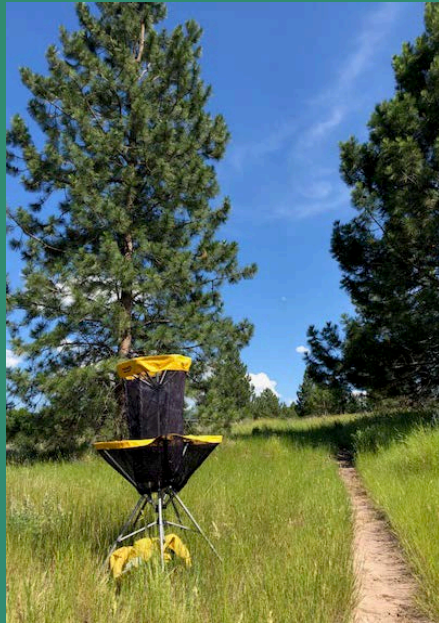


# Folf in the Parks

18 Weeknight Family Friendly Sessions

418 Participants

2 tournaments





# ZOOTOWN DERAILLEURS

MISSOULA, MT

## Afterschool Nordic!





# VOLUNTEERS IN PARKS

1508 Volunteers

9730 Hours



# Morning Move!



# Special Olympics!





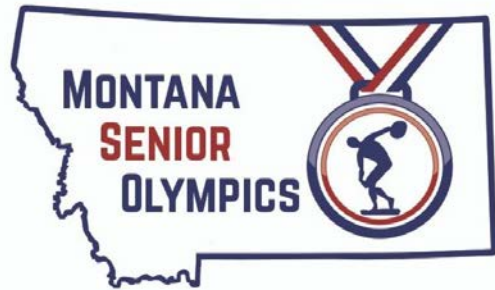
# Missoula Movers



## Generations at Play & Coffee Walks



# WELCOME!



14 SPORTS REQUIRED  
314 TOTAL PARTICIPANTS  
280 MONTANANS  
10 STATES REPRESENTED







# 28<sup>TH</sup> ANNUAL FROST FEVER FROZEN FROLIC 5K & 1MILE





# WELLNESS IN THE PARKS YOGA & PILATES





# PICKLEBALL



# ADULT SPORTS





# ADULT SPORTS



# GET YOUR DINK ON USAPA SANCTIONED PICKLEBALL TOURNAMENT



**FORT MISSOULA**  
REGIONAL PARK



## MONTANA OPEN PICKLEBALL TOURNAMENT





# FIT CITY





# THANK YOU

Missoula Parks & Recreation  
2019 Annual Report