

Public Works Facilities Master Plan

City of Missoula

Public Works & Mobility Department

July 2021



Strategic Goals

- **Operational Excellence** – improve physical capacity to provide services
- **Access to Quality Housing** – support redevelopment at City-owned Scott Street and West Broadway sites
- **Invest in our Built and Natural Environment** – improve traffic circulation, support parks and trails for neighborhood health

Basic Questions

2019 Request for Proposals

- What are our long term space operational and maintenance space needs (next 20 years)?
- How can we use our property more efficiently (or for a higher/better use)?
- Are there partners that have similar needs that could co-locate with PWM?

Potential Partners

City Departments & Divisions

- Streets
- Water
- Sewer Collections
- Storm Water
- Fleet Maintenance
- Parks Department
- Parking Commission

Other Agencies & Private Businesses

- MDT
- Missoula County
- Mountain Line
- Republic Services
- Montana Rail Link
- Beach Transportation
- Zip Beverage

Public Works Facilities Plan

MMW Architects &
Stantec
Architecture Inc.



North Reserve | Scott Street Master Plan

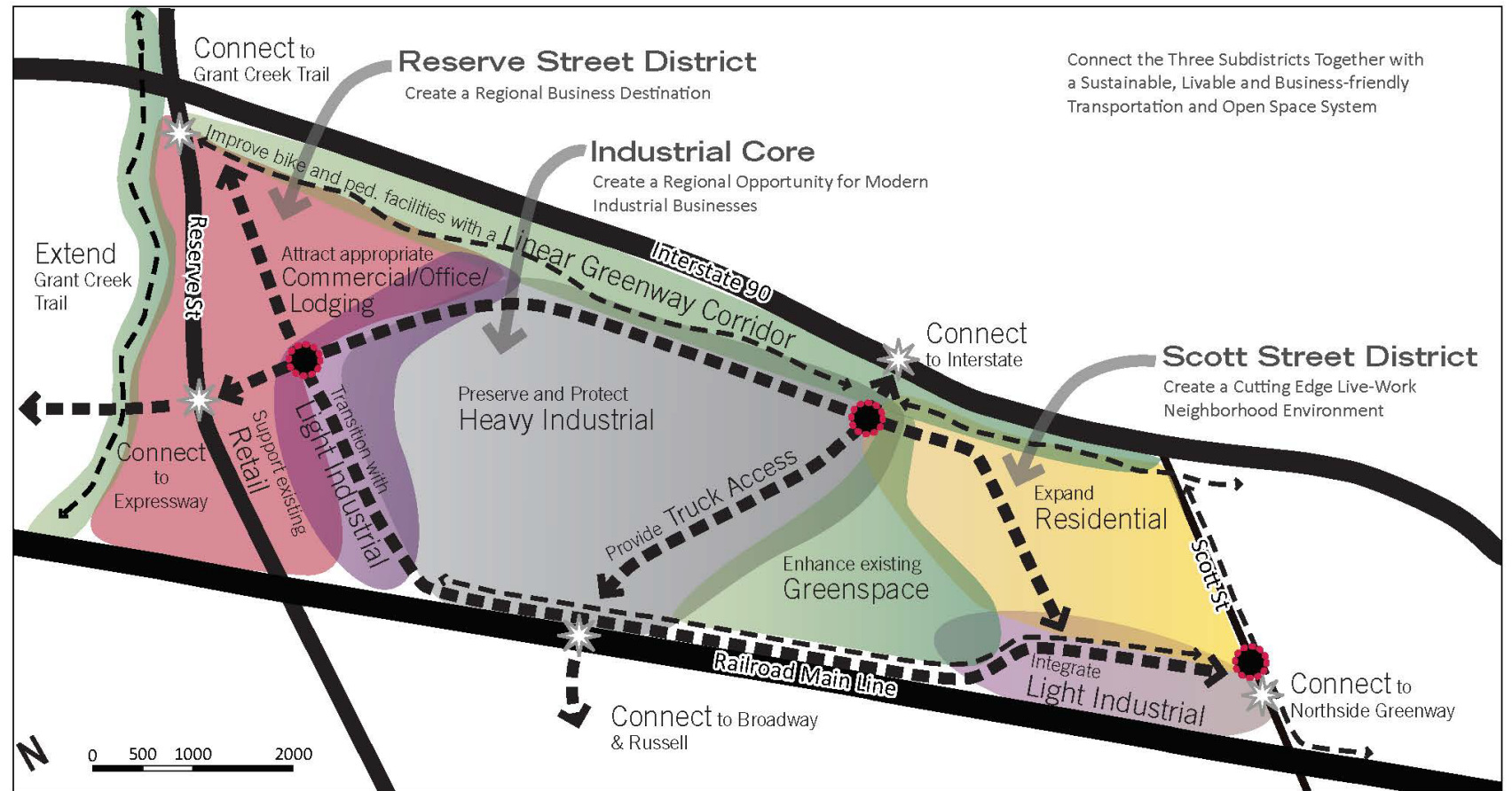


Figure 3-2: Plan Vision

The Plan Vision creates three unique sub-districts connected by a system of roads, trails, and open spaces.

City O&M Space Needs

Total Determined Departmental Needs to 2040:

Department	2020	2030	2040
Public Works Administration	2,294 sf	3,356 sf	4,483 sf
Utilities	69,854 sf	142,168 sf	165,188 sf
Streets	354,973 sf	537,118 sf	604,915 sf
Fleet Maintenance	43,300 sf	67,919 sf	72,149 sf
Parks	245,674 sf	283,221 sf	301,041 sf
Parking Commission	8,135 sf	9,499 sf	9,898 sf
Total Department Needs	724,230 sf	1,043,281 sf	1,157,674 sf
Total (acres)	16.6 ac	24.0 ac	26.6 ac
Scott Street (total acres owned by the City)	27.0 ac*	27.0 ac*	27.0 ac*
Difference (needs vs. owned)	10.4 acres	3.0 acres	.4 acres

Does not include future street rights-of-way or parking for other partners

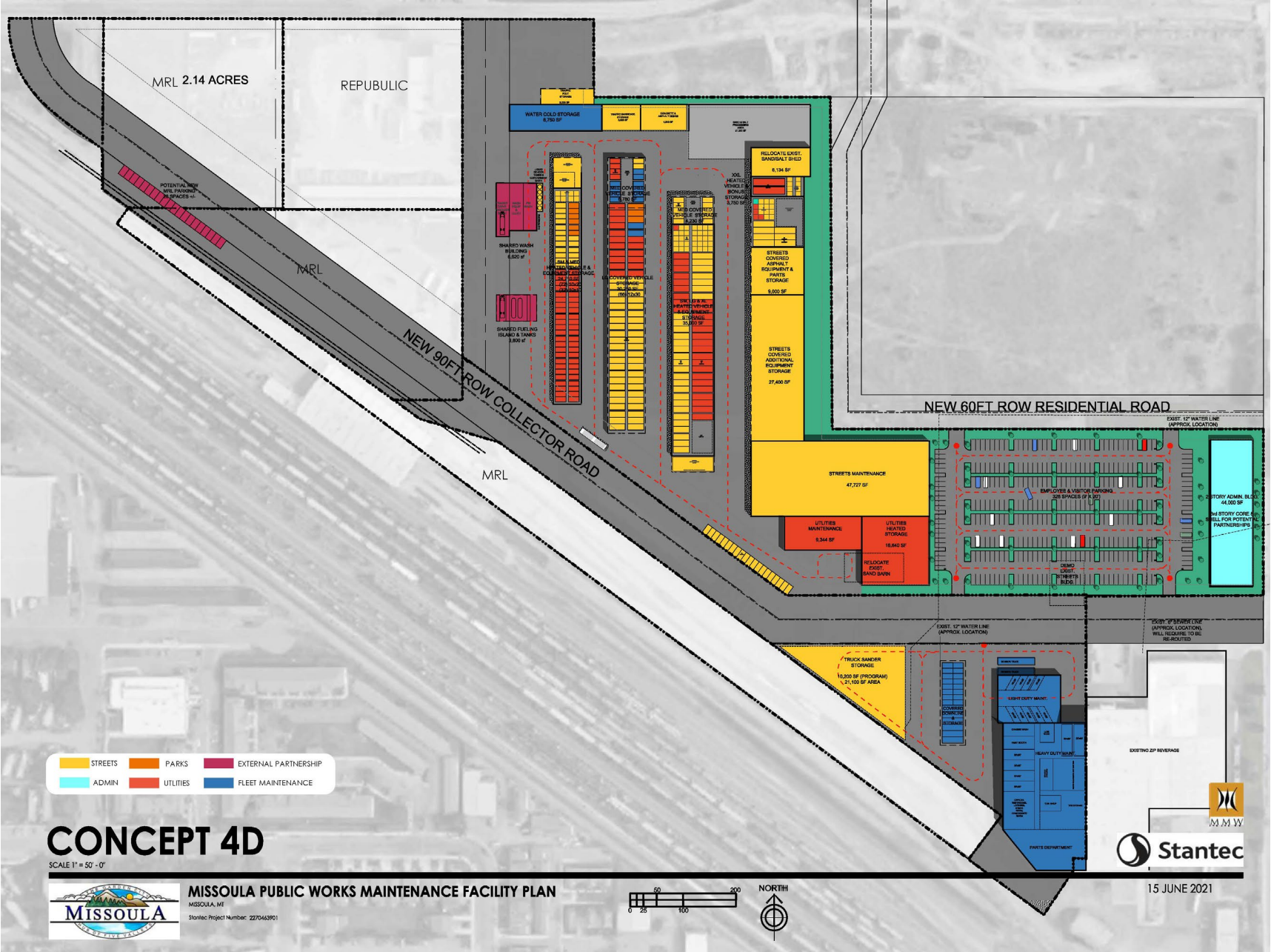
City O&M Space Needs (Scott Street)

Revised Departmental Needs (Scott Street Specific) to 2040:

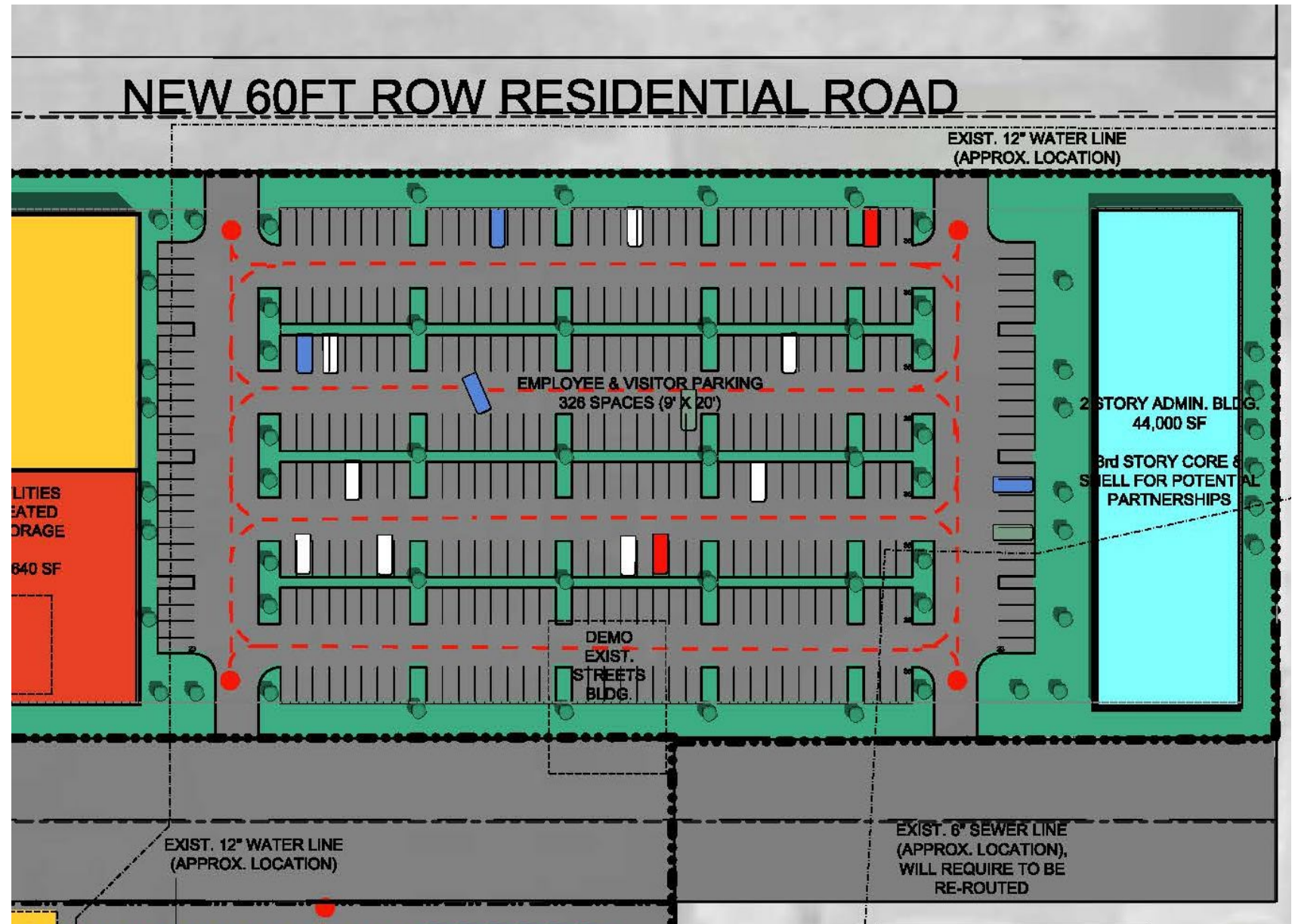
Department		2030	2040
Public Works Administration		3,356 sf	4,483 sf
Utilities		142,168 sf	165,188 sf
Streets		281,750 sf	322,278 sf
Fleet Maintenance		67,919 sf	72,149 sf
Parks		5,600 sf	6,720 sf
Site		295,216	335,591
Total Department Needs		796,009 sf	906,409 sf
Additional non- department needs (new collector street through site and new 60 ft residential road through site)		205,273 sf	205,273 sf
Additional parking needs		60,000 sf (+/-)	60,000 sf (+/-)
TOTAL (sf)		1,061,282 sf	1,086,472 sf
Total (acres)		24.4 ac	24.9 ac
Scott Street (total acres owned by the City)		27.0 ac*	27.0 ac*
Difference (needs vs. owned)		2.6	2.0

Includes future street rights-of-way and parking for other partners

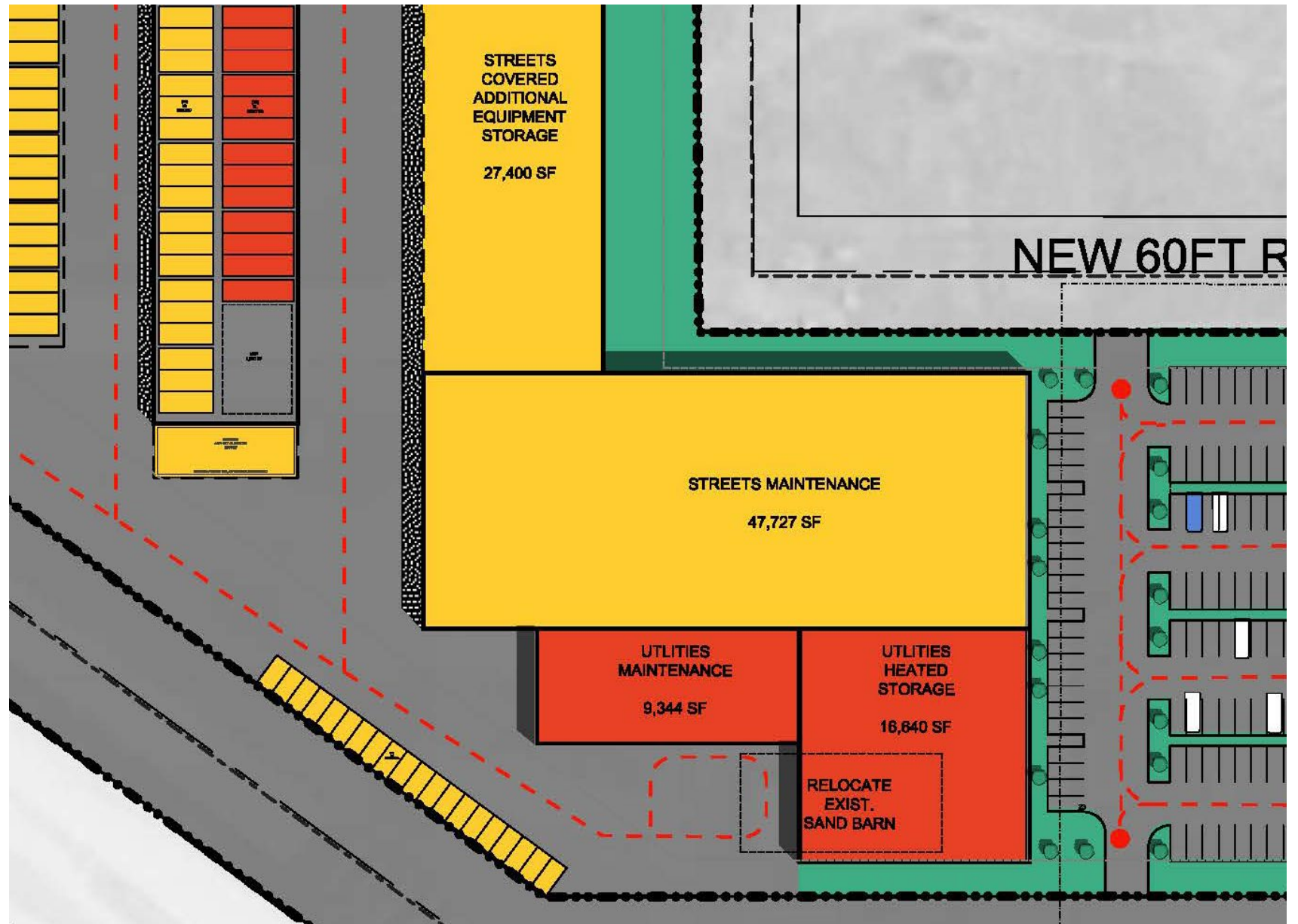
Site Layout



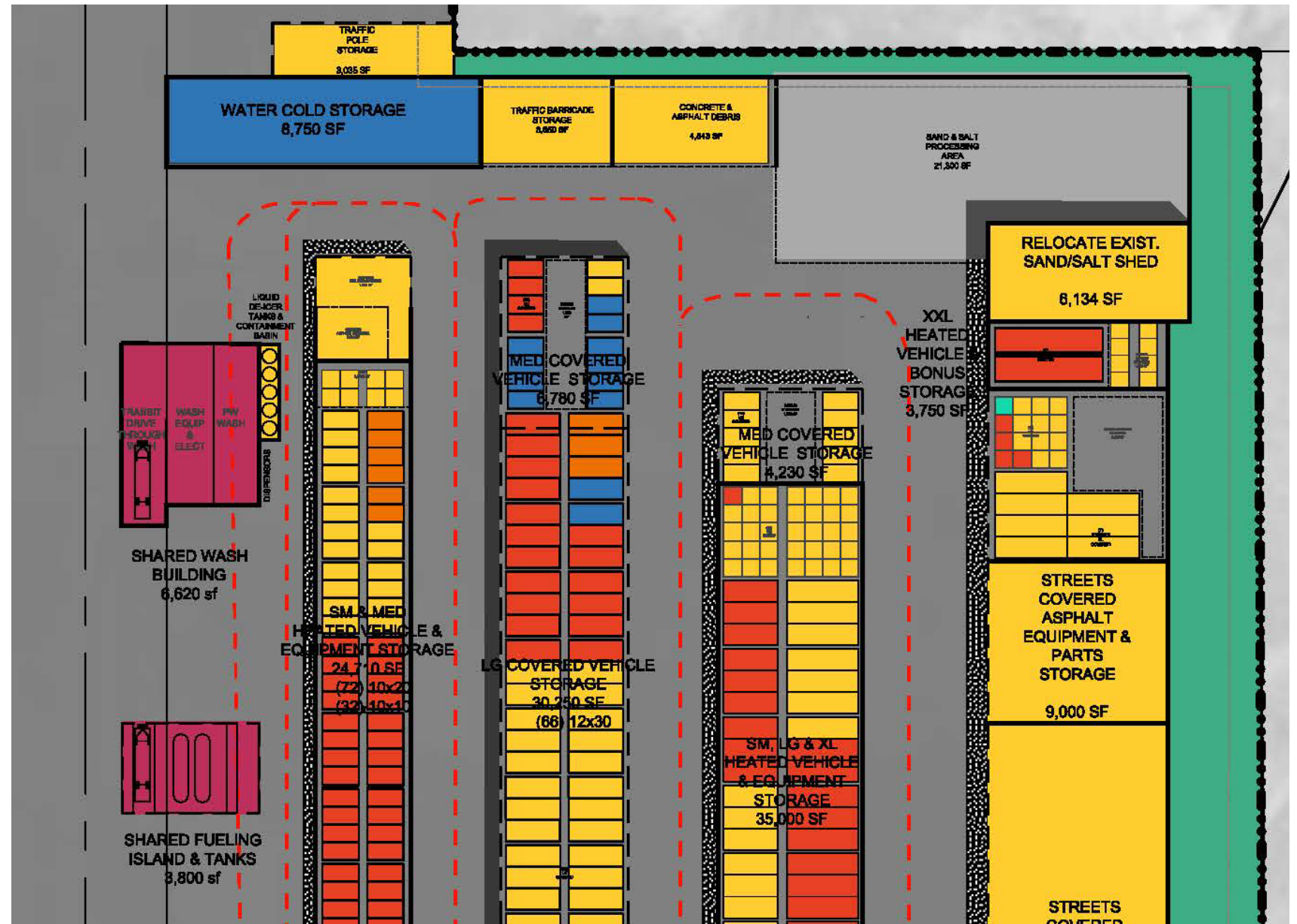
Site Layout



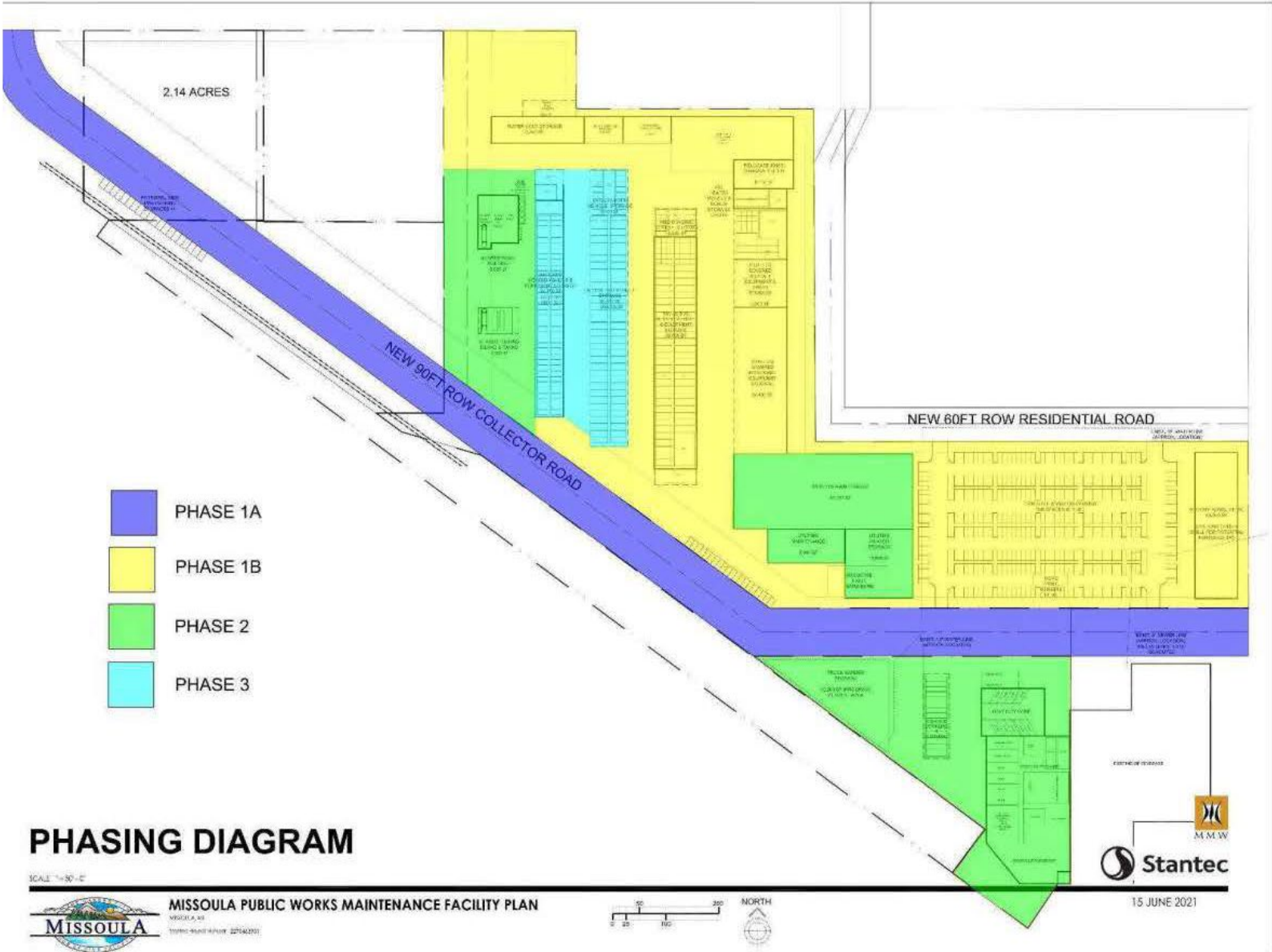
Site Layout



Site Layout



Next Steps



Thank You

Questions?

Jeremy Keene, Director
Public Works & Mobility
keenej@ci.missoula.mt.us
406.552.6353

