



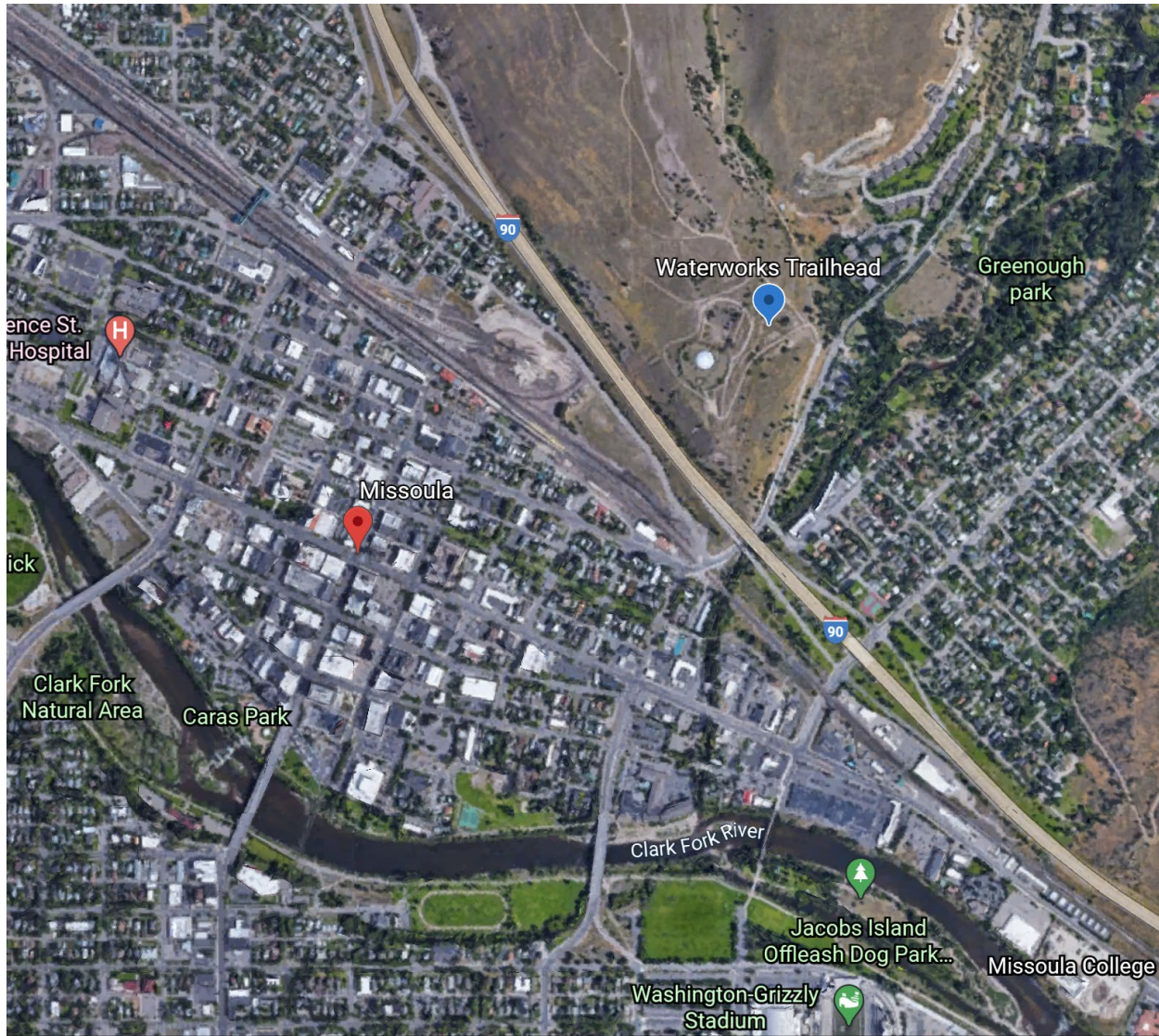
Waterworks Hill Trailhead Construction Services

Parks and Conservation Committee

Neil Miner
Parks and Recreation
September 29, 2021



Project Location



Construction Documents



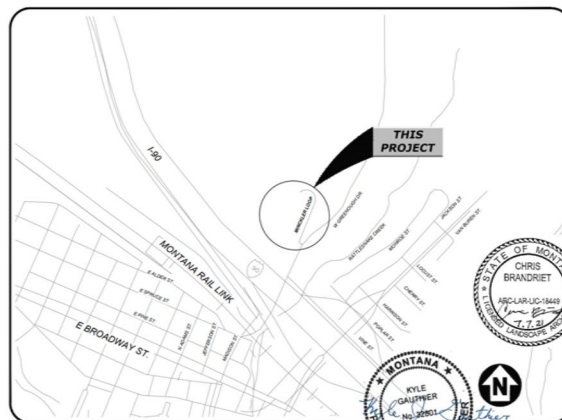
CONSTRUCTION PLANS FOR: MINCKLER LOOP, PARKING LOT, AND TRAILHEAD

CITY OF MISSOULA PROJECT # 2018-014
DJ&A PROJECT #7161
CITY OF MISSOULA, MONTANA



LOCATION MAP

NO.	DESCRIPTION
1	COVER SHEET
2	LEGEND AND SYMBOLS
3	SITE PLAN OVERVIEW
4	PROJECT CONTROL
5	QUANTITIES AND GENERAL NOTES
6	DEMOLITION PLAN
7	EROSION AND SEDIMENT CONTROL
8-9	TYPICAL SECTIONS
10	PLAN AND PROFILE LAYOUT
11-12	ROAD PLAN AND PROFILE
13-18	TRAIL PLAN AND PROFILE
19-21	GRADING SHEETS
22	LAYOUT POINT TABLES
23	CULVERT DETAILS
25-34	CITY OF MISSOULA STANDARD DETAILS
35	RAMP DETAILS
36-38	DETAILS
39	STON AND STIRRING PLAN
40	OVERALL LANDSCAPE RESTORATION & PLANTING PLAN
41	ENLARGEMENT PLAN TRAILHEAD LANDSCAPE SITE PLAN
42	ENLARGEMENT PLAN TRAILHEAD PLANTING PLAN
43-44	PLANTING NOTES
45	SITE AND PLANTING SCHEDULE
46-48	PLANTING DETAILS
49	LANDSCAPE SITE DETAILS
XS1-XS9	ROAD AND TRAIL CROSS SECTIONS



AREA MAP
No Scale



DJ & A
ENGINEERS
PLANNERS
SURVEYORS

ENGINEERING CONTACT:
KYLE GAUSMYER, P.E. PROJECT MANAGER
(406) 721-4300
KYLE GAUSMYER, P.E. PROJECT ENGINEER
(406) 721-4300
RACHEL BAKER LANDSCAPE DESIGNER
(406) 721-4300
GRANT MYRHE, E.I. DESIGN ENGINEER / CONSTRUCTION INSPECTOR
(406) 721-4300



Project Specifications
July 7, 2021

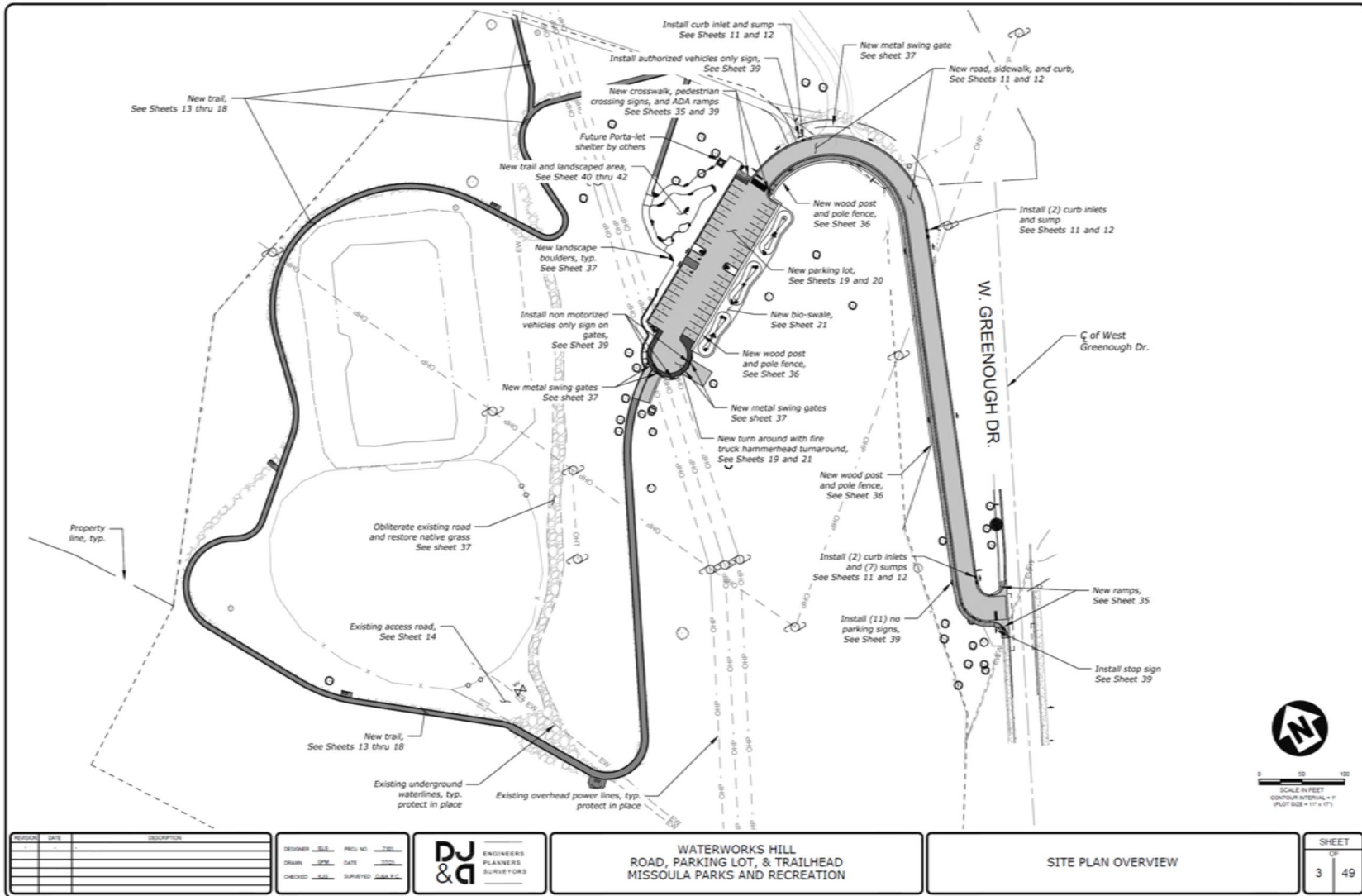
Project Manual and Specifications for the Minckler Loop, Parking Lot, & Trailhead Project

Parks & Recreation Department / Public Works & Mobility Department
City of Missoula

Project # 7161

Prepared By: DJ&A, P.C.
2000 Maple Street Missoula, MT 59803
T 406.721.4320
www.djanda.com

Waterworks Hill Trailhead



- **Recommended Motion:**

Award the bid for both Schedule A and B for the construction services for the Waterworks Hill Trailhead and Minkler Loop Road improvements to JAG Grading and Paving for the amount of \$677,453.40 and authorize the return of bid bonds.

- Funding sources:
 - 2018 GO Open Space Bond: \$170,000
 - Recreation Trails Program Grant: \$50,000
 - BaRSAA (Gas Tax): \$388,143
 - Missoula Water Contribution: \$65,000
 - Park Impact Fees \$125,000

Above funding sources also cover existing Engineering contract (NTE \$125,832)