

Return to: City Clerk
City of Missoula
435 Ryman Street
Missoula MT 59802-4297

RESOLUTION NUMBER _____

A RESOLUTION OF INTENTION TO ADOPT THE AMENDMENT TO THE MISSOULA UTILITY SERVICE AREA BOUNDARY, AND SET A PUBLIC HEARING FOR DECEMBER 5, 2022:

WHEREAS, the City of Missoula Wastewater Service Area boundary was originally created through the adoption of the Wastewater Facilities Plan by Resolution No. 6251; and

WHEREAS, the City of Missoula Wastewater Service Area was modified to add the Water Service Area in creation of the current Utility Service Area Boundary in November 2020; and

WHEREAS, the City of Missoula intends to provide for the orderly and efficient development of properties located within areas previously identified as suitable for annexation as well as in areas where the City is willing to provide water or sewer service under a contract between the City and landowner; and

WHEREAS, both municipal water and sewer systems are needed to provide development densities that will allow the City to meet its future housing needs on the limited developable land near the City; and

WHEREAS, with ongoing improvements identified in the Facilities Plan documents adopted under accommodate the projected growth in the Utility Service Area through the year 2037; and

WHEREAS, only properties located within the adopted Utility Service Area can be provided water and wastewater services by the City of Missoula; and

WHEREAS, inclusion of properties in the Utility Service Area does not guarantee that those properties will be provided with water and/or wastewater service; and

WHEREAS, water and wastewater mains are not available to all properties; and

WHEREAS, the cost of extending water and sewer mains, including all related fees, are the requirement of those requesting the service; and

WHEREAS, water and wastewater services will not be provided to properties in designated floodplains without the express written approval of the Public Works Director; and

WHEREAS, properties requesting water and/or wastewater service that are located inside the Utility Service Area but outside the City limits must apply to the Utility Service Review Committee;

NOW, THEREFORE, BE IT RESOLVED that the Missoula City Council hereby adopts this Resolution of Intent to amend the Utility Service Area Boundary to follow the boundary shown in the attached map, Exhibit A, and to set a public hearing for December 5, 2022.

PASSED AND ADOPTED this 14th day of November, 2022.

ATTEST:

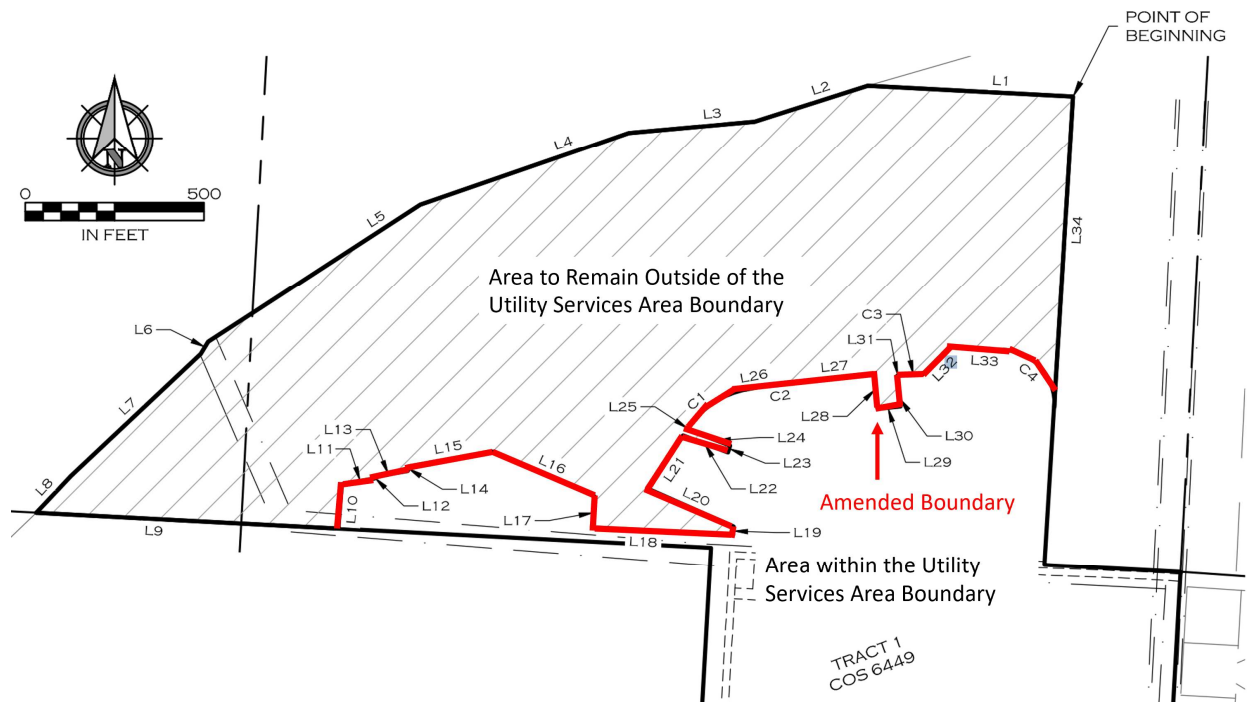
APPROVED:

Martha L. Rehbein, CMC
City Clerk

Jordan Hess
Mayor

(SEAL)

EXHIBIT A: The Utility Service Area Boundary is to be amended to extend to and follow along the boundary on the below map, located on Tract 1 of Certificate of Survey No. 6449, located in the Southeast One-Quarter of Section 2, Township 12 North, Range 20 West, P.M.M., City of Missoula, Missoula County, Montana.



LINE TABLE	
LINE #	BEARING & DISTANCE
L1	N86°58'05"W, 575.46'
L2	S72°25'29"W, 332.23'
L3	S84°50'12"W, 352.66'
L4	S70°59'08"W, 616.87'
L5	S57°01'06"W, 707.59'
L6	S30°59'20"W, 40.02'
L7	S46°50'09"W, 498.00'
L8	S43°24'25"W, 140.94'
L9	S87°00'54"E, 574.20'
L10	N04°34'31"E, 124.32'
L11	N80°05'03"E, 92.96'
L12	N04°34'31"E, 4.53'
L13	N80°05'03"E, 93.84'
L14	N04°34'31"E, 12.91'
L15	N80°05'03"E, 240.68'
L16	S66°11'34"E, 310.62'
L17	S04°34'31"W, 86.72'

LINE TABLE	
LINE #	BEARING & DISTANCE
L18	S87°01'05"E, 394.94'
L19	N03°15'23"E, 22.93'
L20	N66°11'21"W, 264.93'
L21	N34°24'15"E, 178.43'
L22	S69°18'49"E, 134.89'
L23	N15°11'34"E, 20.09'
L24	N69°18'49"W, 128.09'
L25	N34°24'15"E, 8.89'
L26	N79°40'55"E, 60.96'
L27	N84°18'26"E, 258.78'
L28	S05°41'34"E, 96.61'
L29	N84°18'26"E, 64.52'
L30	N05°41'34"W, 86.21'
L31	N84°18'26"E, 4.04'
L32	N44°56'48"E, 108.84'
L33	S86°50'30"E, 150.77'
L34	N03°29'49"E, 871.59'

CURVE TABLE			
CURVE #	RADIUS	LENGTH	DELTA
C1	248.00'	195.98'	045°16'41"
C2	498.00'	40.20'	004°37'31"
C3	618.00'	65.63'	006°05'05"
C4	150.00'	236.50'	090°20'17"