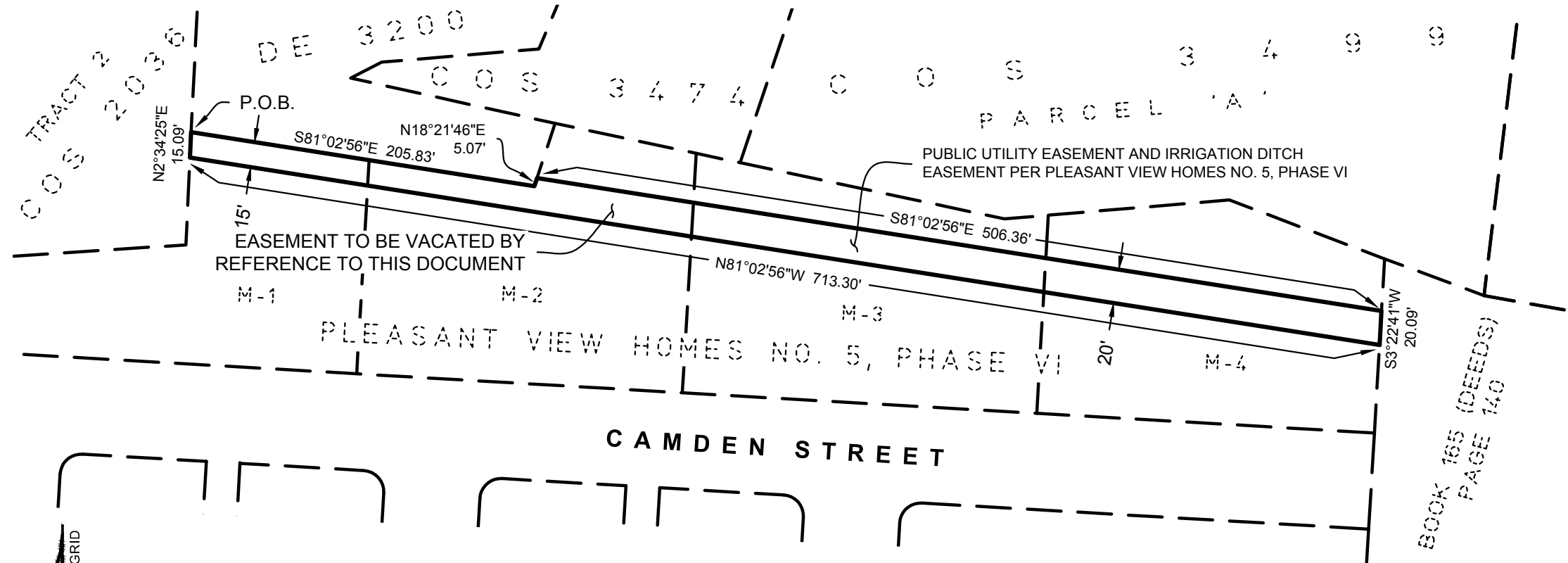


## EXHIBIT 'A'

LOCATED IN THE N1/2 OF SEC. 7, T.13N., R.19W., P.M.M., CITY OF MISSOULA, MISSOULA COUNTY, MONTANA



BOOK 165 (DEEDS)  
PAGE 140



A horizontal scale bar with a black and white checkered pattern. The bar is divided into segments. Above the bar, the numbers 40, 0, 40, and 80 are printed. Below the bar, the text "SCALE IN FEET" is printed.

## BASIS OF BEARING

PLEASANT VIEW HOMES NO. 5, PHASE VI

PREPARED BY:



1817 SOUTH AVE. W. STE. A PH: 406.721.0142  
MISSOULA, MT FAX: 406.721.5224  
59801 [www.imegcorp.com](http://www.imegcorp.com)

IMEG PROJECT NO. 20001540

## LEGEND

COS = CERTIFICATE OF SURVEY  
DE = DEED EXHIBIT

**LEGAL DESCRIPTION - (EASEMENT TO BE VACATED)**

A STRIP OF LAND BEING A PORTION OF LOTS M-1, M-2, M-3, AND M-4 OF PLEASANT VIEW HOMES NO. 5, PHASE VI, A SUBDIVISION OF THE CITY OF MISSOULA, LOCATED IN THE NORTH ONE-HALF (N1/2) OF SECTION 7, TOWNSHIP 13 NORTH, RANGE 19 WEST, PRINCIPAL MERIDIAN MONTANA, MISSOULA COUNTY, MONTANA, AND BEING MORE PARTICULARLY DESCRIBED AS FOLLOWS:

BEGINNING AT THE NORTHERLY-MOST CORNER OF SAID LOT M-1, SAID POINT BEING THE POINT OF BEGINNING; THENCE THE FOLLOWING TWO COURSES ALONG THE NORTHERLY BOUNDARIES OF SAID LOTS M-1 AND M-2, S81°02'56"E 205.83 FEET; THENCE N18°21'46"E 5.07 FEET TO THE INTERSECTION WITH THE NORTH LINE OF THAT PUBLIC UTILITY EASEMENT AND IRRIGATION DITCH EASEMENT DEPICTED ON PLEASANT VIEW HOMES NO. 5, PHASE VI; THENCE ALONG SAID NORTH LINE, S81°02'56"E 506.36 FEET TO THE INTERSECTION WITH THE EAST BOUNDARY OF LOT M-4 OF SAID PLEASANT VIEW HOMES NO. 5, PHASE VI; THENCE ALONG SAID EAST BOUNDARY, S3°22'41"W 20.09 FEET TO THE INTERSECTION WITH THE SOUTH LINE OF THAT PUBLIC UTILITY EASEMENT AND IRRIGATION DITCH EASEMENT DEPICTED ON PLEASANT VIEW HOMES NO. 5, PHASE VI; THENCE ALONG SAID SOUTH LINE, N81°02'56"W 713.30 FEET TO THE INTERSECTION WITH THE BOUNDARY OF LOT M-1; THENCE ALONG SAID BOUNDARY, N2°34'25"E 15.09 FEET TO THE POINT OF BEGINNING.

**SHEET 1 OF 1**