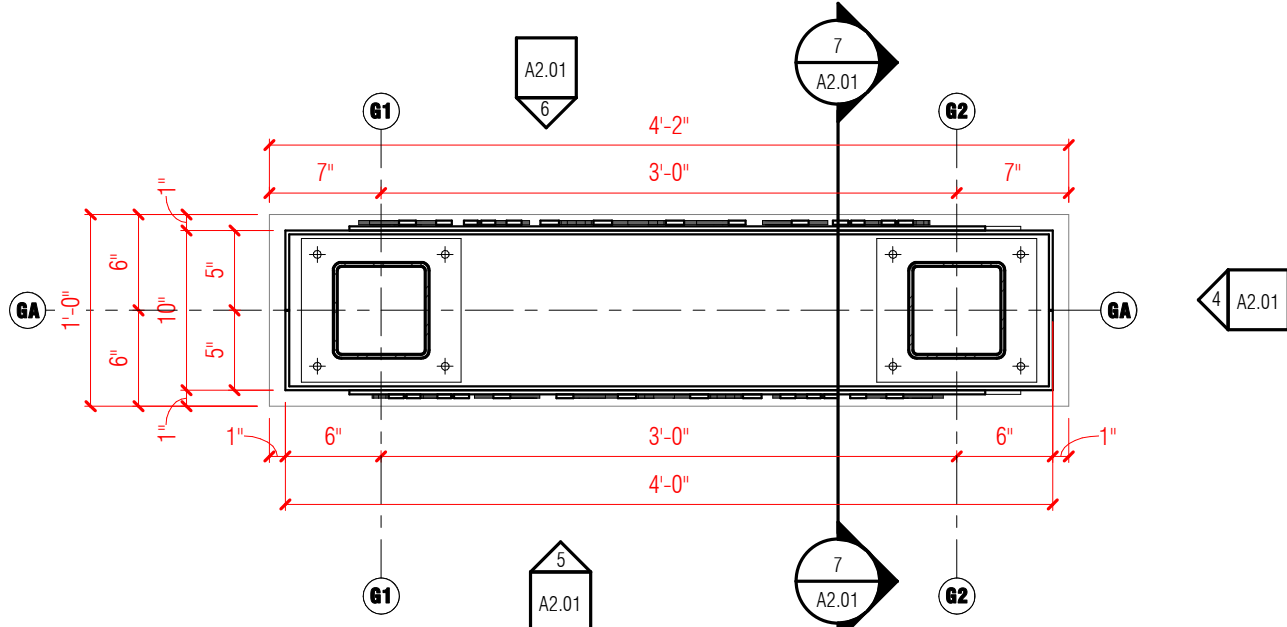
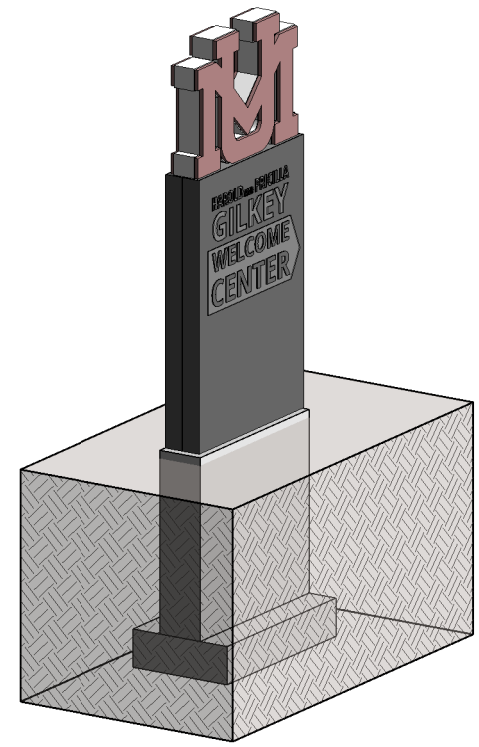


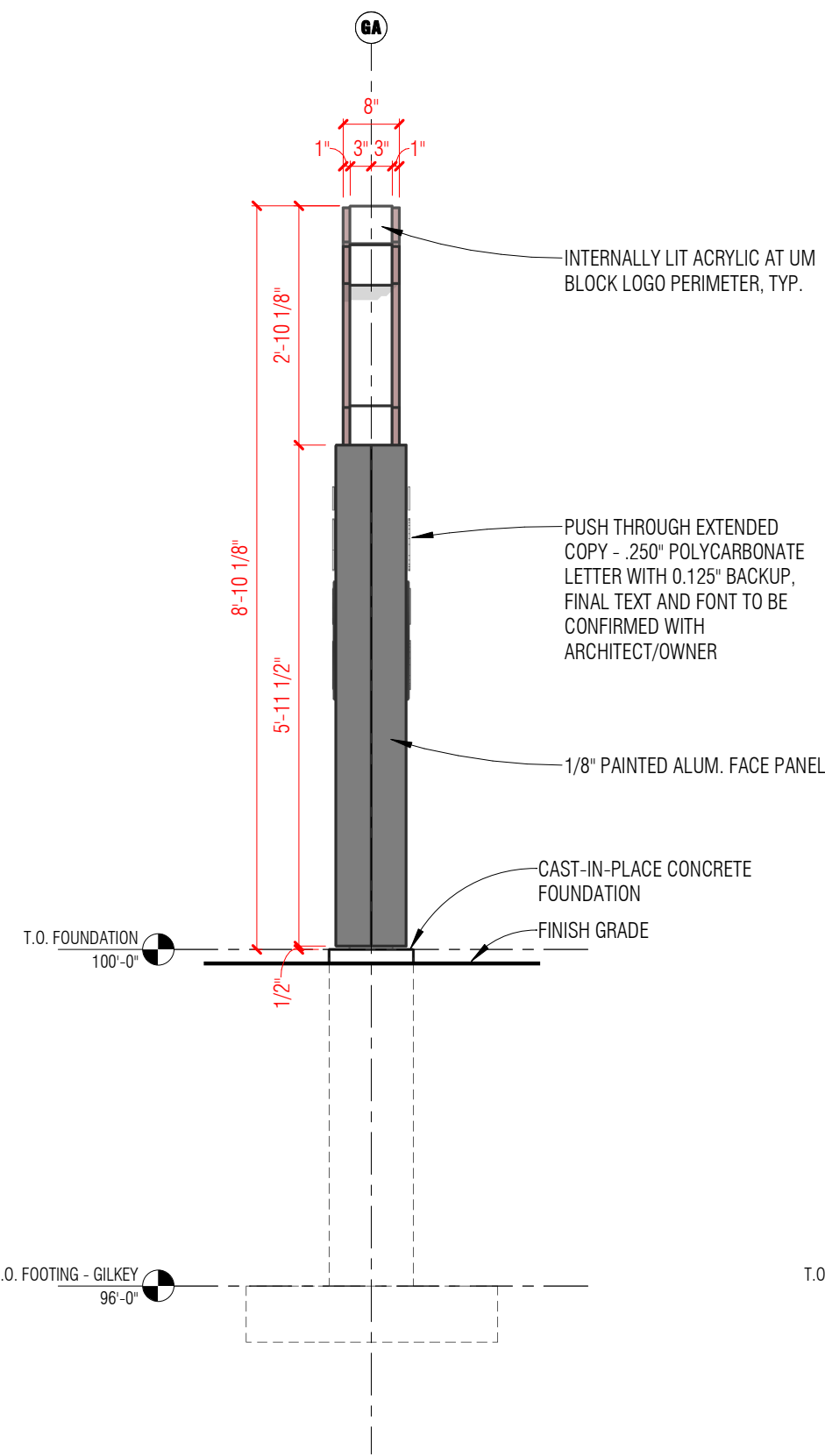
1 GILKEY DIRECTIONAL SIGN SITE PLAN
1" = 10'-0"



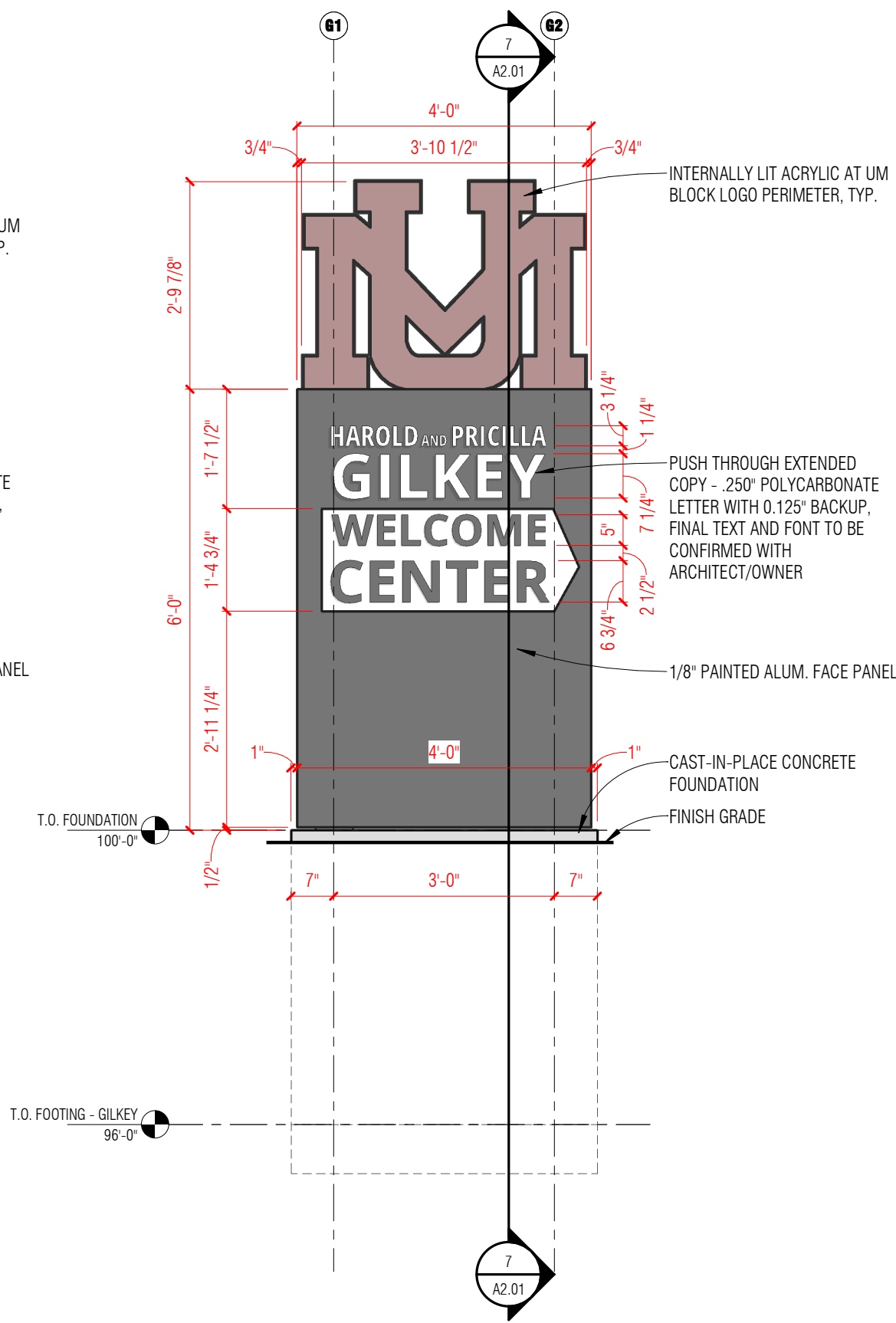
2 GILKEY DIRECTIONAL SIGN PLAN
1" = 1'-0"



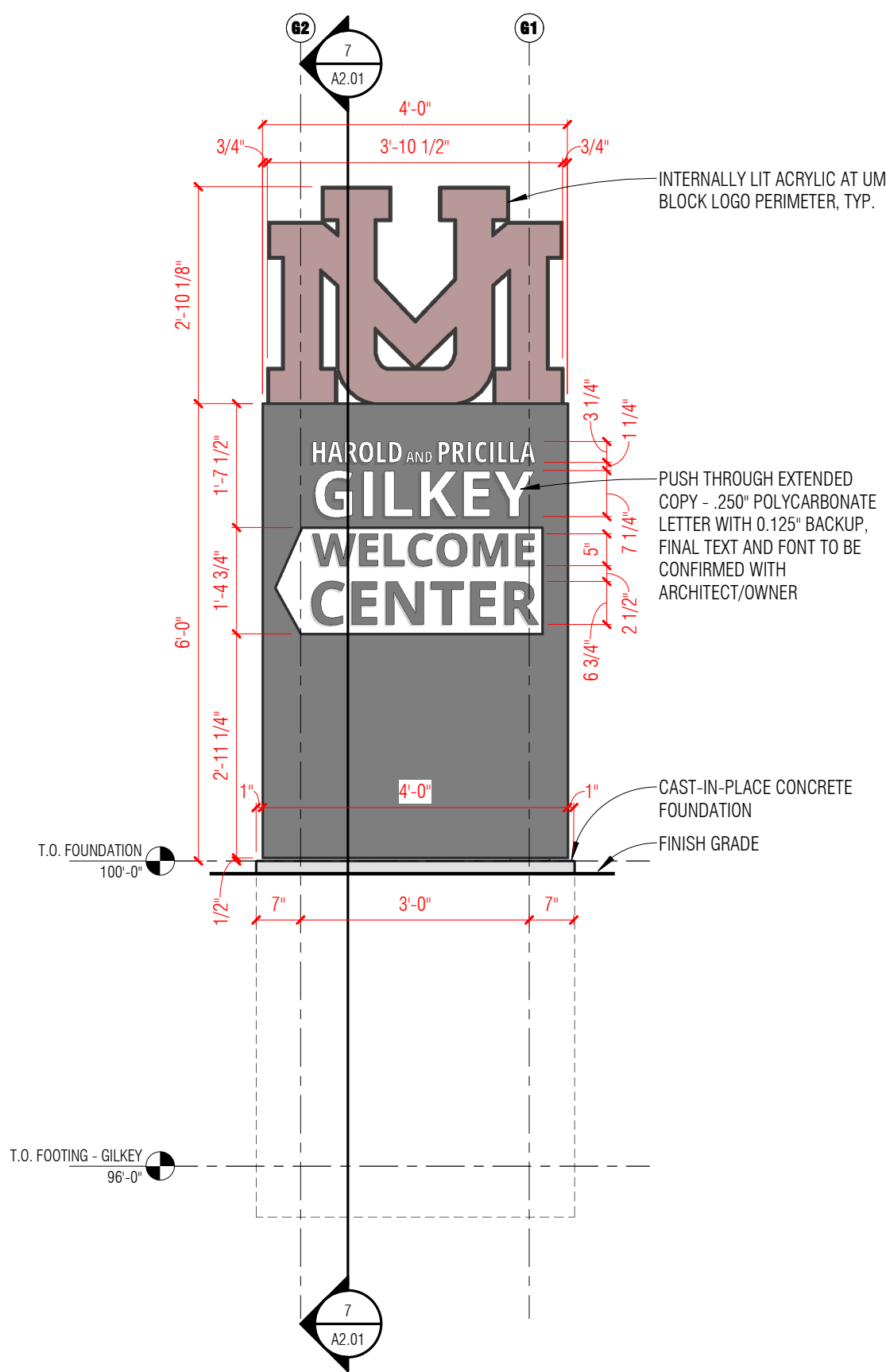
3 GILKEY DIRECTIONAL SIGN
1" = 1'-0"



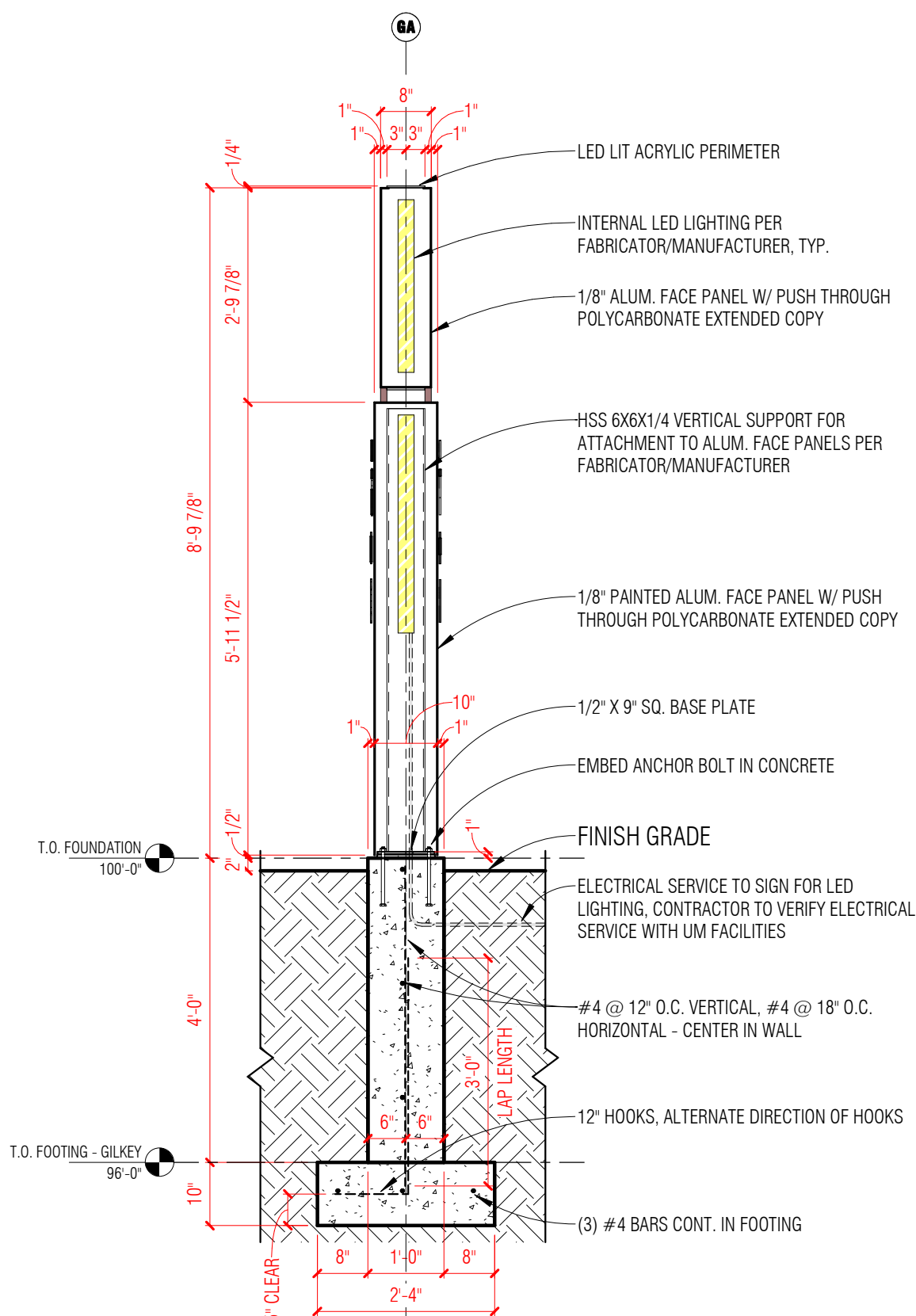
4 EAST ELEVATION - WEST SIM.
1/2" = 1'-0"



5 SOUTH ELEVATION
1/2" = 1'-0"



6 NORTH ELEVATION
1/2" = 1'-0"



7 DIRECTIONAL SIGN SECTION
1/2" = 1'-0"

SHEET NOTES - SIGNAGE

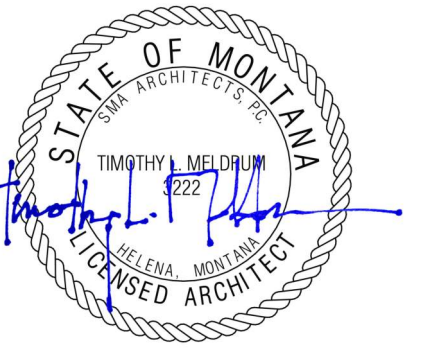
1. DIMENSIONS ARE TYPICALLY TAKEN TO GRID, FACE OF MASONRY, FACE OF CONCRETE, FACE OF METAL.

KEYNOTES - ARCHITECTURAL SITE PLAN

1. CONNECT ELECTRICAL FOR SIGN TO (E) ELECTRICAL SERVICE. CONTRACTOR TO VERIFY ELECTRICAL SERVICE WITH UM FACILITIES
2. GILKEY DIRECTIONAL SIGN - SEE PLANS AND ELEVATIONS
3. EXISTING SIDEWALK
4. EXISTING ASPHALT
5. EXISTING TREE TO REMAIN
6. EXISTING CROSSWALK



ARCHITECT SEAL:



PROJECT:
UM WAYFINDING AND
SIGNAGE

PROJECT NUMBER:
2101

PROJECT LOCATION:
UNIVERSITY OF MONTANA MAIN CAMPUS
MISSOULA, MT

PREPARED FOR:

LOGO:



CONSULTANT:

KEYMAP:

REVISIONS:

No.	Date	Revision Description
-----	------	----------------------

THESE DRAWINGS ARE INTENDED
TO BE PRINTED IN COLOR

TEAM:
DRAWN BY: Author
CHECKED BY: Checker

TITLE:

GILKEY DIRECTIONAL SIGN

BIM FILE PATH:

PHASE:
CONSTRUCTION DOCUMENTS

DATE:
2022-08-26

PROJECT NUMBER:
2101

SHEET NO.:

A2.01

COPYRIGHT 2021 SMA, P.C.