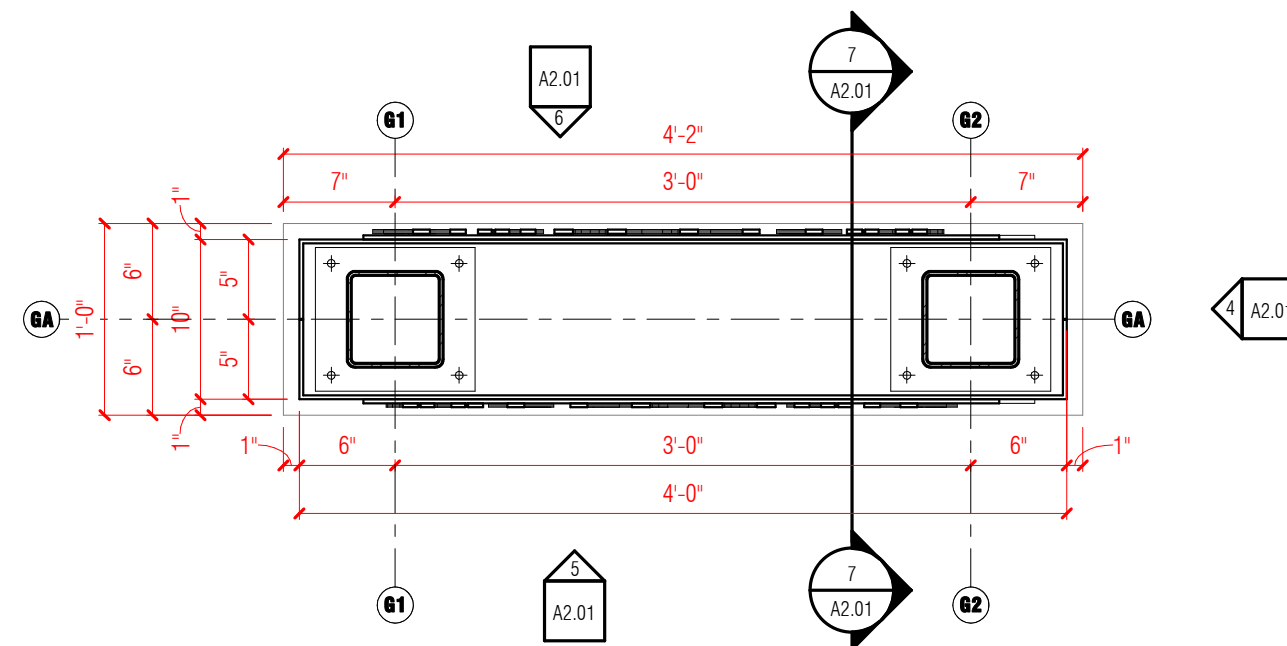
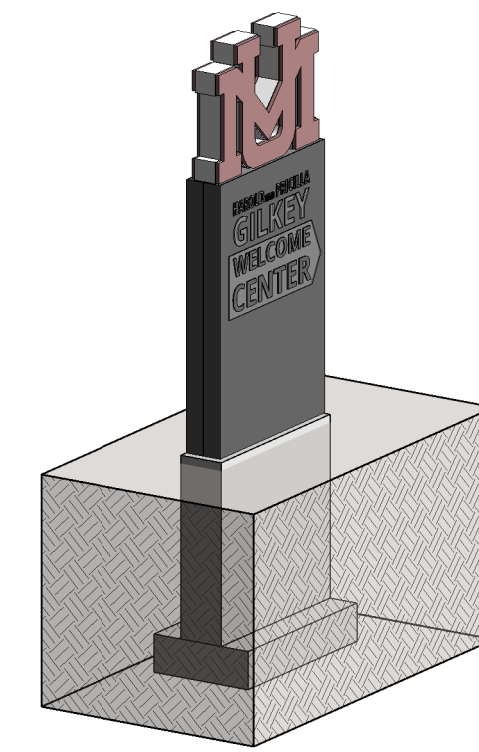


1 GILKEY DIRECTIONAL SIGN SITE PLAN
1" = 10'-0"



2 GILKEY DIRECTIONAL SIGN PLAN
1" = 1'-0"



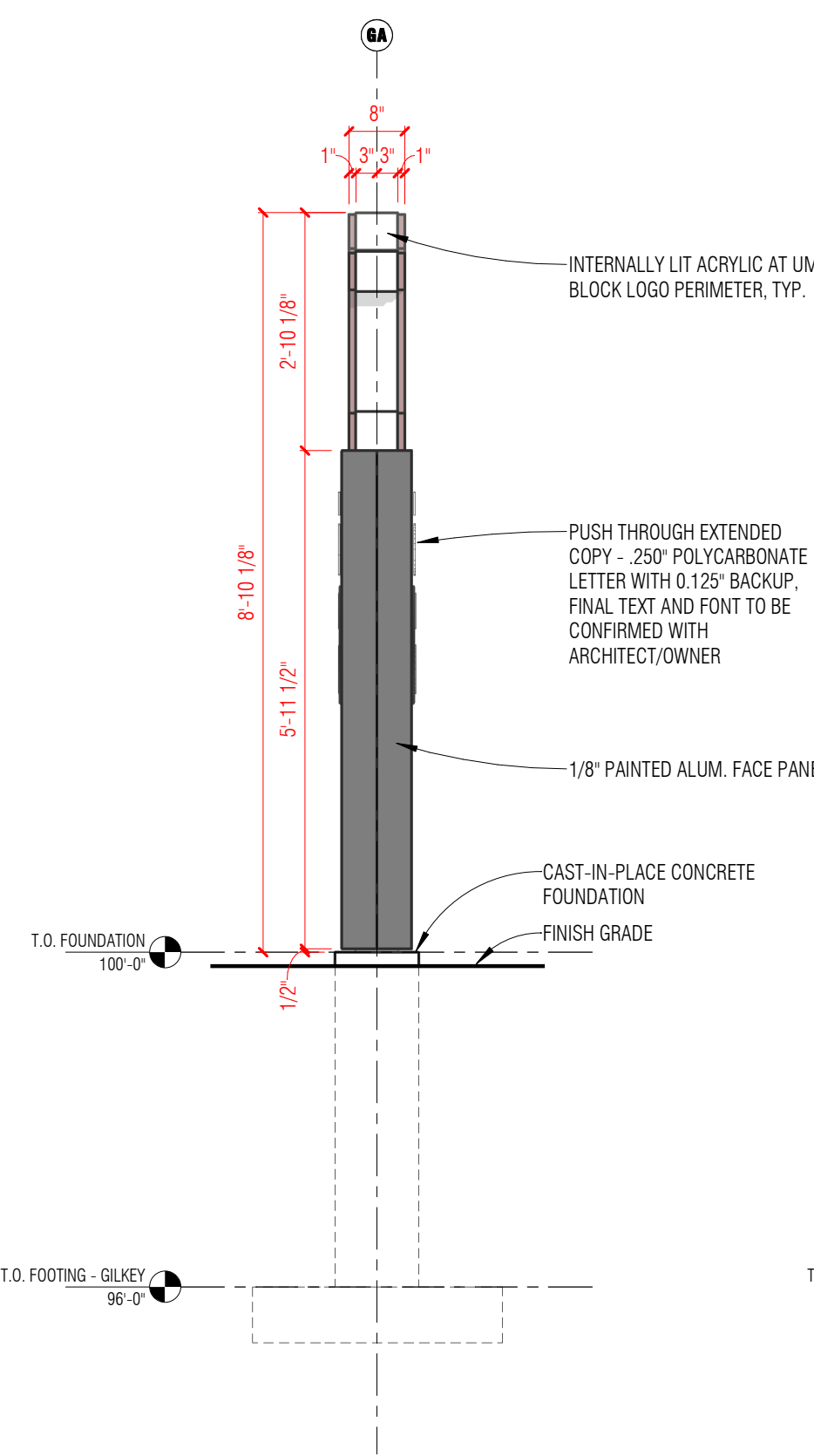
3 GILKEY DIRECTIONAL SIGN
1" = 1'-0"

SHEET NOTES - SIGNAGE

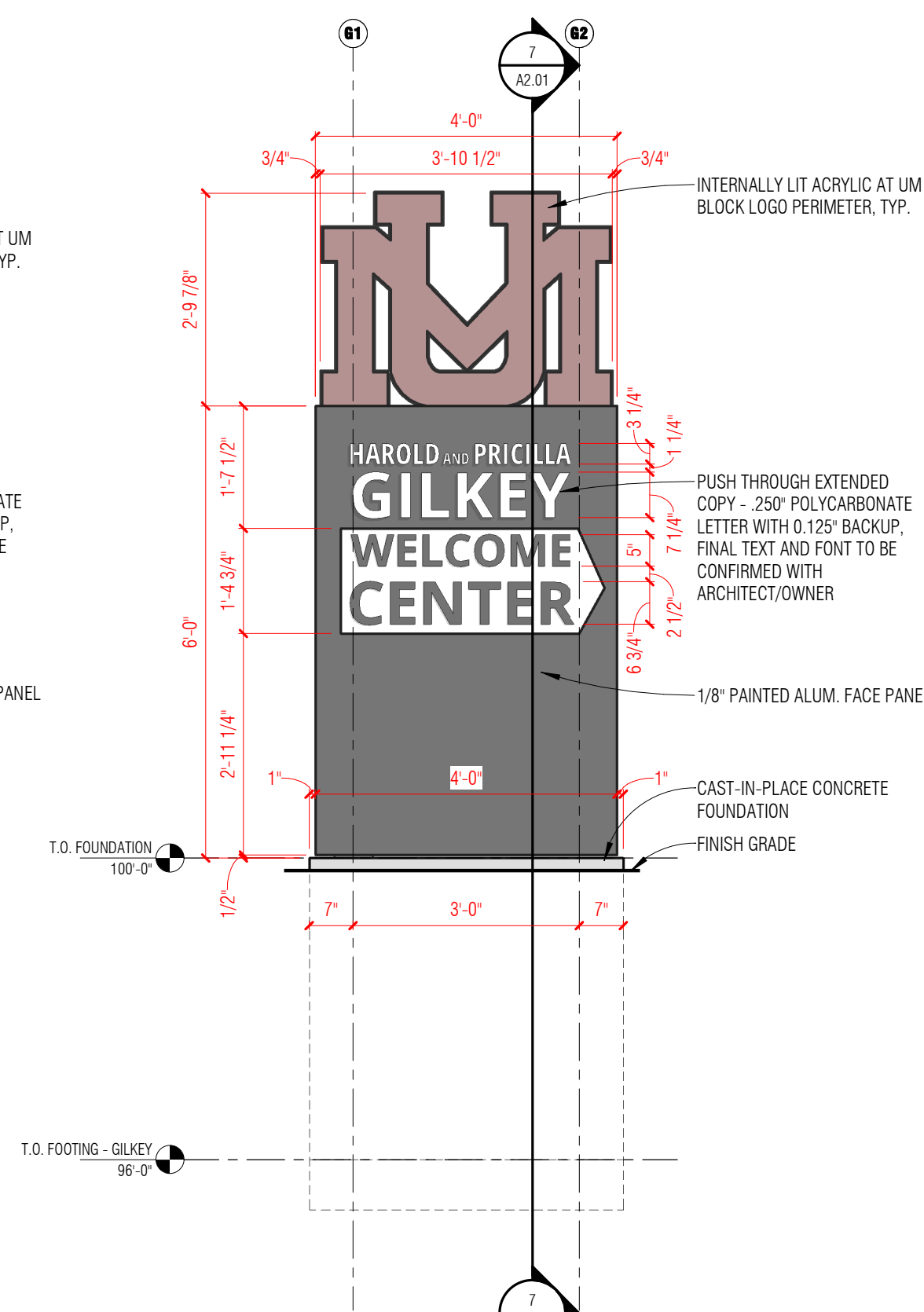
1. DIMENSIONS ARE TYPICALLY TAKEN TO GRID, FACE OF MASONRY, FACE OF CONCRETE, FACE OF METAL.

KEYNOTES - ARCHITECTURAL SITE PLAN

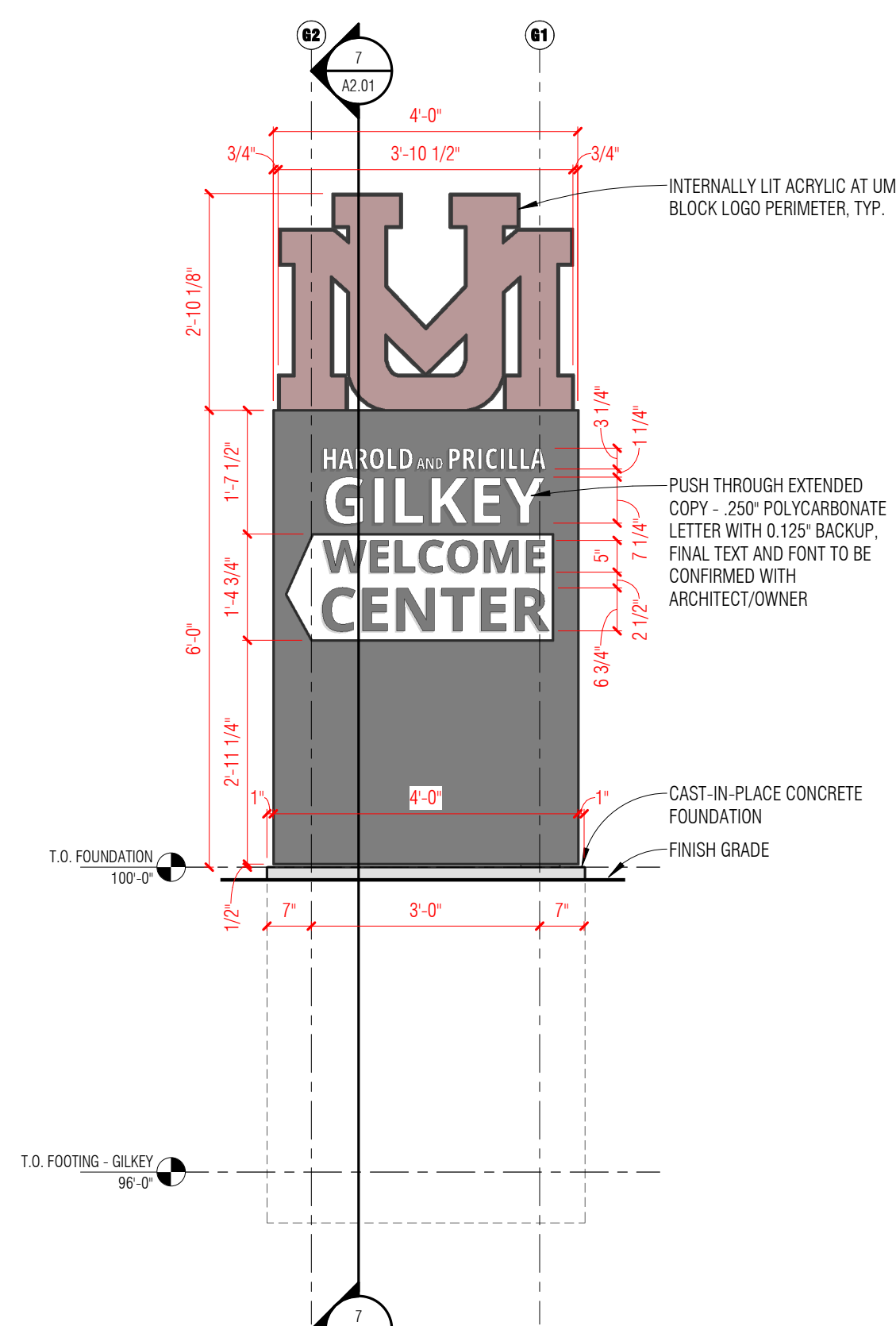
1. CONNECT ELECTRICAL FOR SIGN TO (E) ELECTRICAL SERVICE, CONTRACTOR TO VERIFY ELECTRICAL SERVICE WITH UM FACILITIES
2. GILKEY DIRECTIONAL SIGN - SEE PLANS AND ELEVATIONS
3. EXISTING SIDEWALK
4. EXISTING ASPHALT
5. EXISTING TREE TO REMAIN
6. EXISTING CROSSWALK



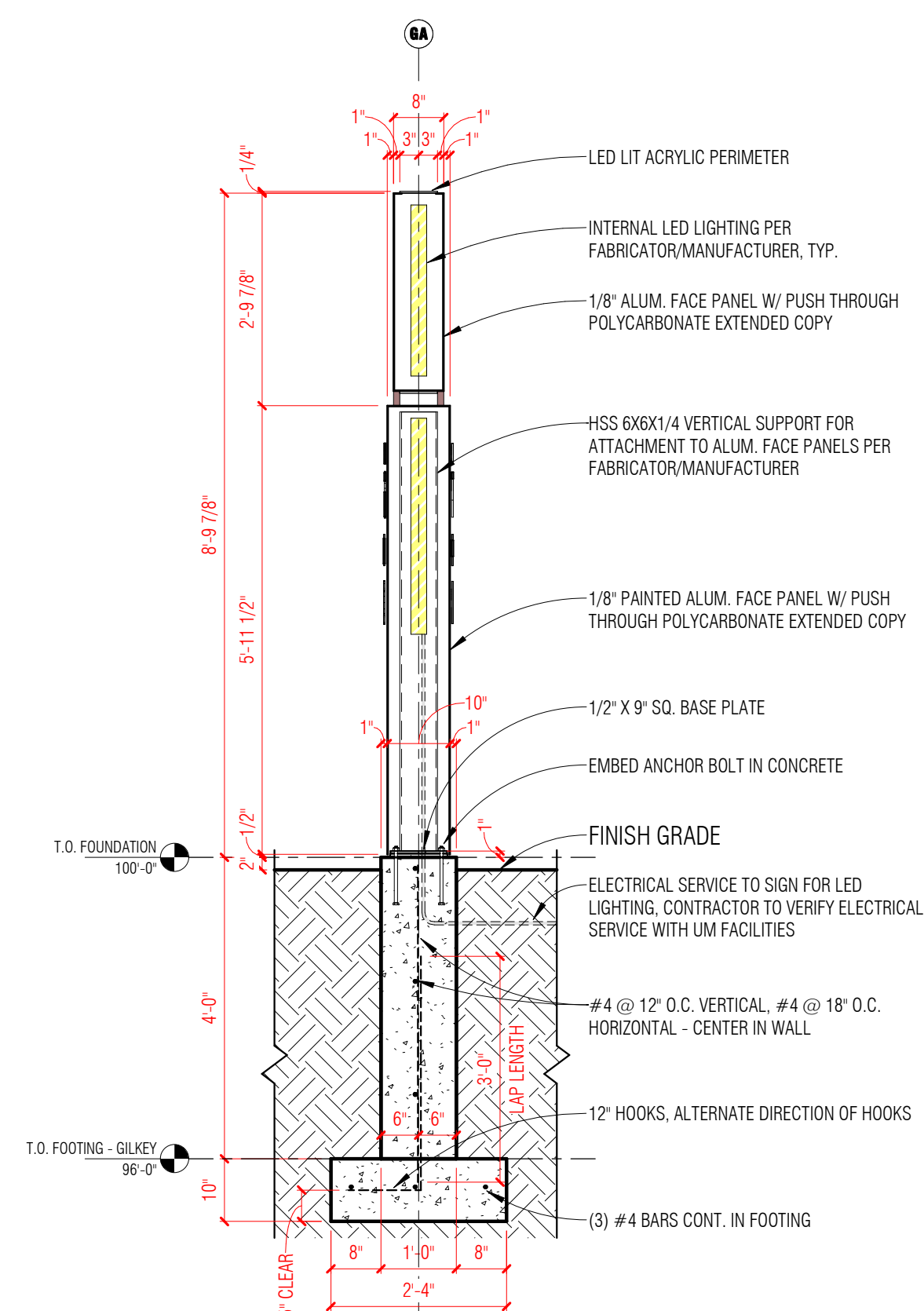
4 EAST ELEVATION - WEST SIM.
1/2" = 1'-0"



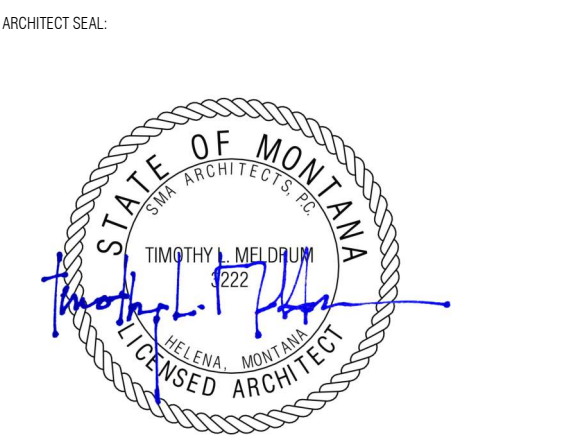
5 SOUTH ELEVATION
1/2" = 1'-0"



6 NORTH ELEVATION
1/2" = 1'-0"



7 DIRECTIONAL SIGN SECTION
1/2" = 1'-0"



PROJECT:
UM WAYFINDING AND SIGNAGE

PROJECT NUMBER:
2101

PROJECT LOCATION:
**UNIVERSITY OF MONTANA MAIN CAMPUS
MISSOULA, MT**

PREPARED FOR:



CONSULTANT:

KEYMAP:

REVISIONS:

No.	Date	Revision Description

THESE DRAWINGS ARE INTENDED TO BE PRINTED IN COLOR

TEAM:
DRAWN BY: Author
CHECKED BY: Checker

TITLE:

GILKEY DIRECTIONAL SIGN

BM FILE PATH:
C:\Users\jmel\Documents\2101-UM Signage Wayfinding Sign\2101_sign\architect.sma.com.mt

PHASE:
CONSTRUCTION DOCUMENTS

DATE:
2022-08-26

PROJECT NUMBER:
2101

SHEET NO.:

A2.01