



MRA Project Summary

February 13, 2023

Urban Renewal District: Front Street URD

City Council Ward: 1

Neighborhood: Heart of Missoula

Name of Project: South Pattee Streetlight Replacement– Request for Funding

Project Location: 200 Block of South Pattee Street

TIF Investment: \$ 47,300

Project Description: Northwestern Energy's electrical substation located adjacent to S. Pattee St. is being reconstructed and the overhead wiring is being relocated underground. This project presents the opportunity to continue replacement of car centric obsolete streetlights by replacing the two streetlights located on that block with the downtown City standard lights, eliminate the overhead lines serving the lights, and widen the sidewalk by locating the new lights between the sidewalk and the substation.

Cost Breakdown of TIF/CCP/CRLP Funds:

TIF Funds - \$47,300

Unique Public Purpose or Benefit: This use of TIF funds allows MRA to continue the incremental replacement of obsolete streetlights in the downtown, provide improved pedestrian lighting, eliminate unsightly overhead wiring and widen a substandard sidewalk.

Tax Increment Investment: MRA will partner with City Public Works & Mobility to fund the replacement of two streetlights in conjunction with the Northwestern Energy's reconstruction of the electrical substation at a cost of \$47,300.

District Sunset Date: 2046



MEMORANDUM

TO: MRA Board of Commissioners

FROM: Ellen Buchanan, Director *EB*

DATE: February 10, 2023

SUBJECT: South Pattee Streetlight Replacement

Northwestern Energy (NWE) is in the process of replacing their electrical substation located adjacent to the 200 block of South Pattee Street. As part of that project, all of their overhead wiring and poles will be removed on the west side of the block. The project will result in modifications to two streetlights on the west side of the street next to the substation and new wall which will surround the equipment. The existing streetlights are located in the sidewalk which is already substandard in width. The lights are extremely unsightly consisting of two older wood poles with lights, a wood service pole and overhead wires. There are four options available to us with this project. 1) Do nothing and leave the three poles, 2 lights and 1 service pole, in place; 2) have NWE relocate the poles closer to the substation and out of the sidewalk, retaining the overhead lines; 3) relocate the existing poles out of the sidewalk, remove the overhead wires and place them in concrete; or, 4) replace the old fixtures with the City standard downtown light poles and luminaires with underground wiring. Option 1 is the only one that results in no cost to NWE and is what they would chose to do without funding from the City. The cost estimates for options 2 & 3 are considerably less than the 4th option with each likely under \$10,000.

MRA has been replacing the older streetlights with the new City standard downtown lights incrementally as both public and private projects provide the opportunity when there are adequate resources available. TIF has been used to pay for the upgraded lighting on projects like the new banks and hotels and intersection improvements being carried out by the Montana Department of Transportation (MDT). This NWE project presents an opportunity to clean up an unsightly streetscape, install appropriate pedestrian lighting and widen the sidewalk. The new substation surrounded by the wall which will be used to display large art and this new lighting will be transformative for that block of Pattee Street.

The City's Public Works & Mobility Department solicited bids for this streetlight project and received a low bid of \$47,300. The bid range was \$47,300 - \$56,000. This is higher than what we have seen in the past or had anticipated; however, like everything else, the price of materials has increased significantly. Steve Reichert is managing this project and is confident that we will not be able to get better pricing by reissuing the bid. Steve will be

attending the Board meeting and can answer any questions that you might have. I have attached a copy of the plans showing the location of the new streetlights and the spec sheet for the downtown City standard light.

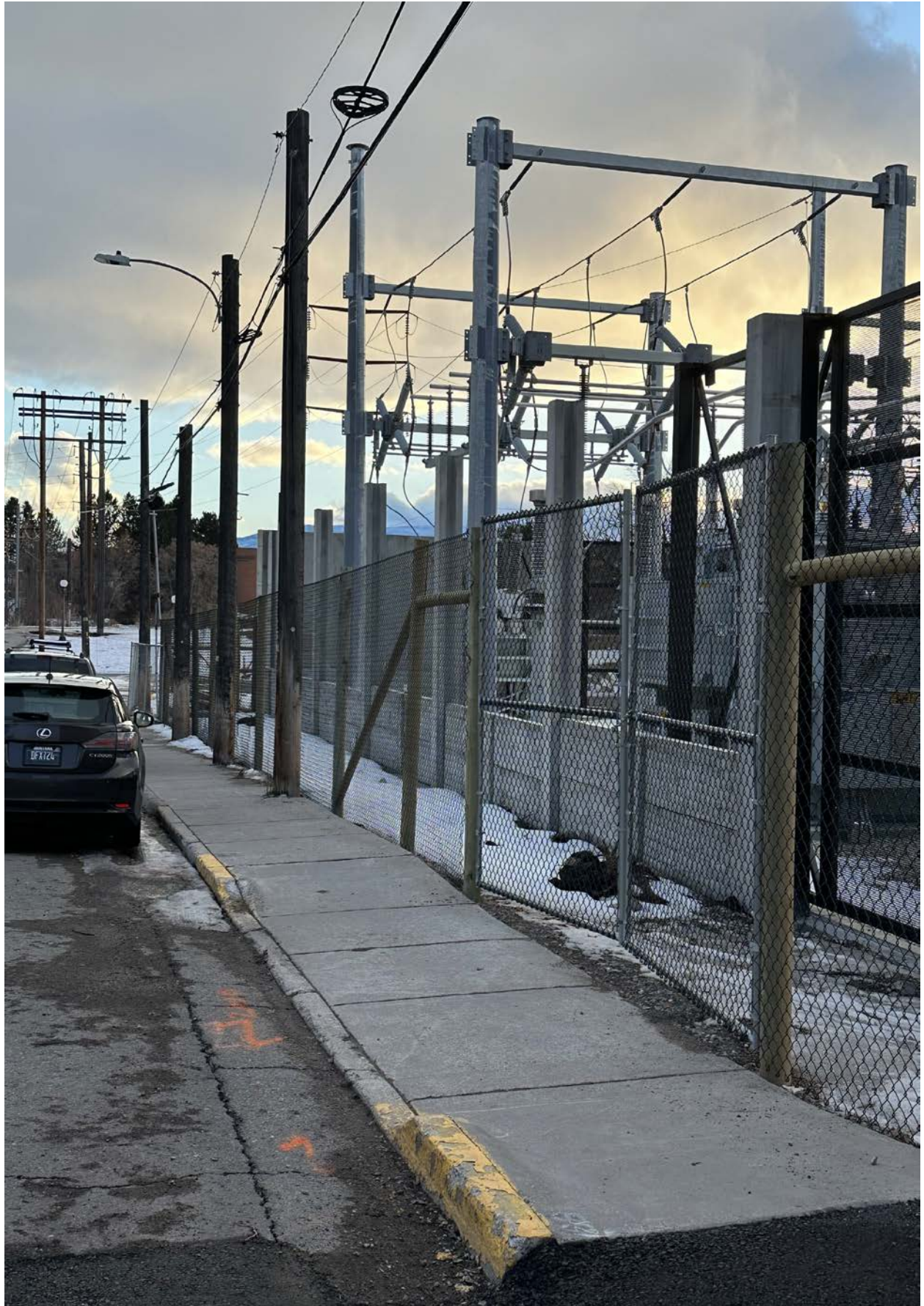
This would be paid for using TIF funds from the Front Street URD which has just over \$1M in unencumbered funds and staff believes that an expenditure of \$47,300 will not adversely impact MRA's ability to carry out projects in the District for the remainder of FY23.

City of Missoula Strategic Plan

This investment in the continuing effort to create a safer, more walkable and inviting downtown meets the strategic goals in the City of Missoula Strategic Plan as follows:

- Safety and Wellness – Invest in transportation projects and create complete multi-modal networks that are comfortable, safe and accessible for people of all ages and all abilities.
- Community Design and Livability – Ensure pedestrian, bike and bus facilities connect residents to work, school, recreation, services and other amenities.

Recommendation: Staff recommends that the MRA Board approve an expenditure of \$47,300 for the replacement of two streetlights on the west side of the 200 block of South Pattee Street with the downtown City standard pedestrian streetlights to be located between the sidewalk and the NWE substation and authorize staff to work with City Public Works & Mobility to execute any required agreements.



c:\users\jquinn\documents\drawings\001_pattee or dr lighting\lighting plans.dwg



CONSTRUCTION NOTES

- DESCRIPTION
- A 1 - 2" PVC CONDUIT
2 - AWG NO. 8 CONDUCTOR (LIGHTING)
1 - AWG NO. 8 CONDUCTOR (GROUND)
 - B 1 - 2" PVC CONDUIT
1 - PULL TAPE



0 10 20 Feet

ITEM LEGEND

DESCRIPTION

- P.S. POWER SUPPLY
- NEW PULL BOX
- ★ NEW STREETLIGHT
- CONDUIT & WIRE

SHEET NOTES

DESCRIPTION

1. CONTRACTOR SHALL NOTIFY ALL UTILITY COMPANIES AND DETERMINE THE EXACT LOCATION OF ALL UNDERGROUND UTILITIES BEFORE COMMENCING WORK.
2. CONDUIT RUNS ARE SHOWN SCHEMATICALLY. FIELD VERIFY THE BEST OFFSET LOCATION FOR THE LIGHTING CONDUIT. NOTIFY ENGINEER OF CONDUIT RUNS THAT DIFFER FROM DRAWING.

REVISION NO. DATE DESCRIPTION

LIGHTING PLANS

S PATTEE ST LIGHTING
CITY OF MISSOULA PROJECT NO. 23-004

SHEET NO.

L1

MSL HANG STRAIGHT PLUMBIZER WITH OR WITHOUT PHOTOCELL RECEPTACLE (VERIFY PC OR NOT)

POLYURETHANE FINIAL

CONFIDENTIAL: This drawing is confidential and proprietary to the Lighting Division of Mountain States Lighting (MSL), and may not be reproduced without the express written consent of MSL. Any use hereof or of any of the information or detail herein shall be for the sole benefit of MSL, © 2001 MSL

PRODUCT APPROVALS	
SALES	
ENG.	
CUST.	

FINISH;
BLACK IN COLOR

HADCO FIXTURE-64 OR 80LED
SEE SEPERATE DRAWING

C0855M for North Higgins

OPTIONAL:
PROVIDE 1"-8 UNC COUPLING
FOR FLAG ACCESSORY
VERIFY ORIENTATION FROM
BANNER ARMS,
FLAG & FLAGPOLE BY OTHERS

POLE: 25'

SHAFT: TAPERED FLUTED STEEL or ALUMINUM

MINIMUM 16 EPA @ 80 MPH, 1.3 GF

25TFS-8/4.5-4'SA/SCR ARM-(2)BA-(1)FH OULET - GF1-22' MAD (LOGO)

5'

OPTIONAL:
BANNER ARMS-LOWER & UPPER
31" LONG EXPOSED EXACTLY- LESS THREADS

9'-6"

22" DIA x 38" HIGH BASE (NOMINAL)
DECORATIVE HIGH DENSITY
ELASTOMER, 1/2" MIN. THICKNESS
WITH "MISSOULA LOGO" (SEE SEPERATE LOGO DWG)
CAST INTO TOP RING. LOGO TIPPED IN "NEW PENNY" COPPER COLOR.

38.25"

GROUT
AS NEEDED

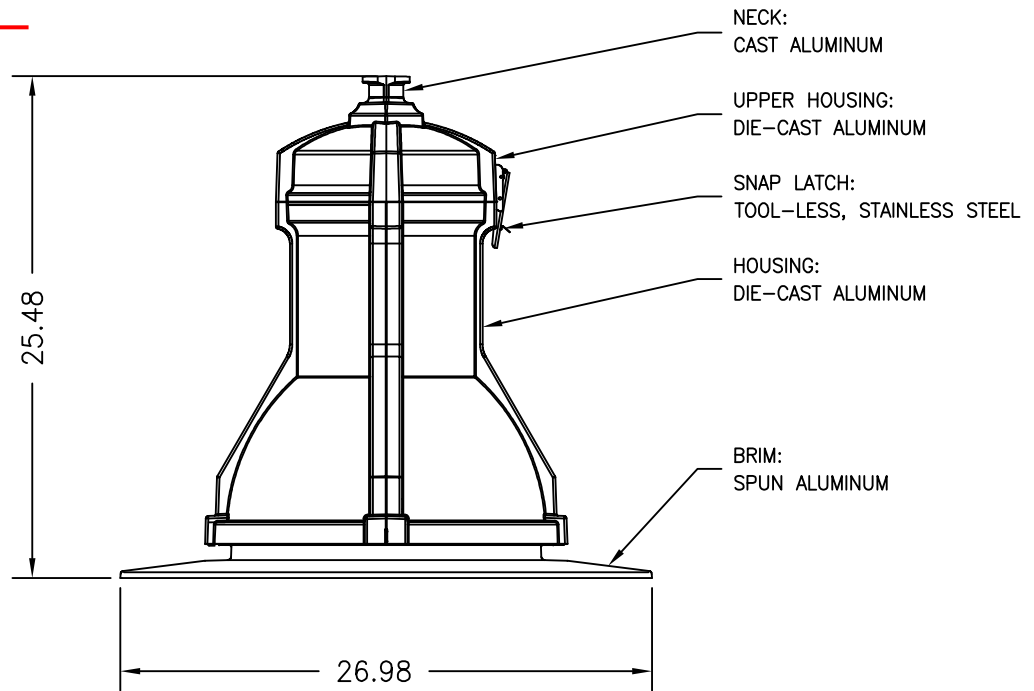
SIDEWALK GRADE

REVISIONS: PP - 10/12 No Medallion, ver acc, Revised to 8' Bot Shaft			
MOUNTAIN STATES LIGHTING		P.O. Box 13358 Ogden, Utah 84412-3358 Phone 801-605-9057 Fax 801-605-9058	
JOB NAME: Missoula-Single Teardrop 64 or 80 LED Fixture			
SCALE: NTS	DATE: 04-25-16	DRAWN BY: PMP	DRAWING NUMBER: MM-TR-G-SGL-LED 04/16
REP: Mountain States		QUOTE #:	DIST.:

Ordering Guide:

C0855L: LUMINAIRE, TYPE IV OPTICS
C0855M: LUMINAIRE, TYPE III OPTICS

Color:
Black

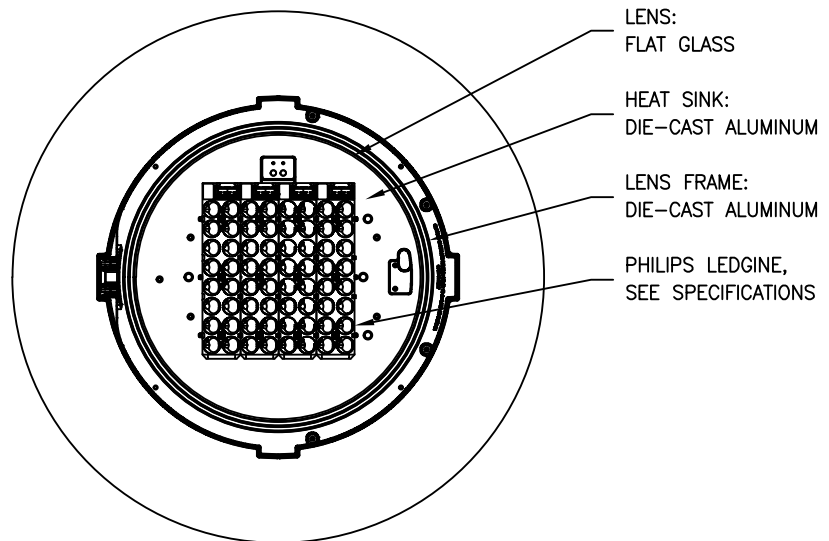


Philips LEDgine Specifications:

- 64, 4000K (neutral) Philips Lumileds Luxeon T LEDs, typical 75 Color Rendering Index (CRI), >100,000 hours of operational life (at 25°C ambient temperature & 70% lumen maintenance), injection molded Type III or Type IV optical plates, IP66 rated LED module.
- Integral Philips Advance Xitanium LED programmable driver, class 1, IP66 rated, 530mA, IntelliVolt 120-277 VAC, 50-60 Hz, RoHS compliant, field replaceable 10kV/10kA surge suppression.
- Type III; Delivered lumens: 14302, Wattage: 105W.
Type IV; Delivered lumens: 14214, Wattage: 105W.

Luminaire Certifications:

- UL8750 & UL1598 compliant, ETL & cETL listed to U.S. & Canadian safety standards for wet locations, manufactured to ISO 9001:2008 standards.



CONFIDENTIAL:

This drawing is confidential and proprietary to Philips Hadco and may not be reproduced without the express written consent of Philips Hadco. Any use hereof or of any of the information or detail herein shall be for the sole benefit of Philips Hadco.

NOTICE:

This drawing is for reference only. Check for latest revision prior to ordering.

PRODUCT APPROVALS

HADCO

SDK

CUSTOMER

100 Craftway Drive
Littlestown, Pa 17340
Phone 800-331-4185
Fax 717-359-9289
www.philips.com

PHILIPS
HADCO

JOB NAME:

City of Missoula

SCALE:

1:10

DATE:

07/06/17

DRAWN BY:

SMK

DRAWING NUMBER:

C0855-DWG09

REP:

Northern Rockies

REV:

A

PCN:

17-016

BY:

DATE: