

Public Forum

—  
City Council

# Missoula County TSOS, Emergency Pallet Shelter

2340 Mullan Road



Madson Matthias, Associate Planner  
CPDI  
September 12, 2022

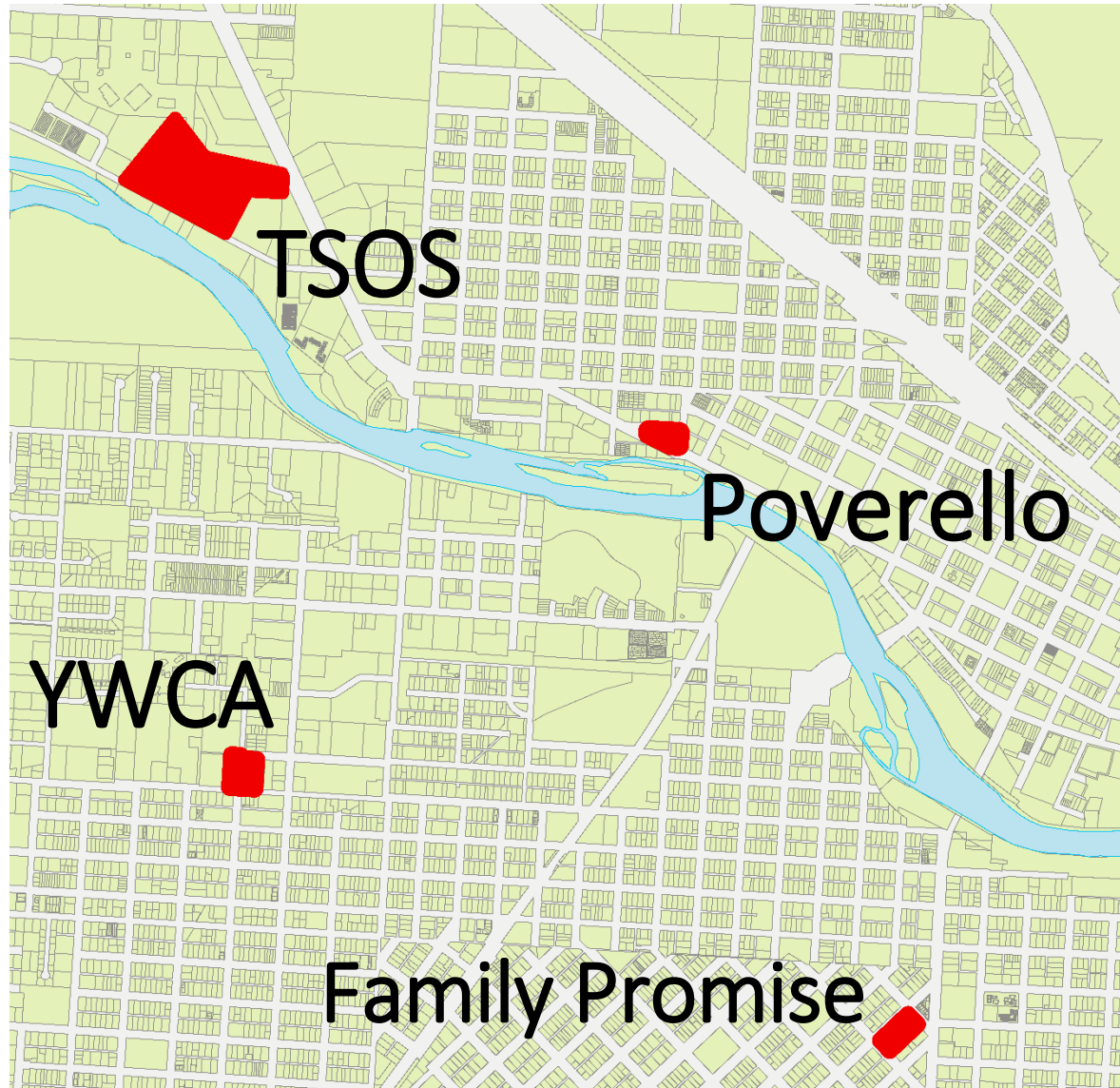
# Exemptions for Public Agencies



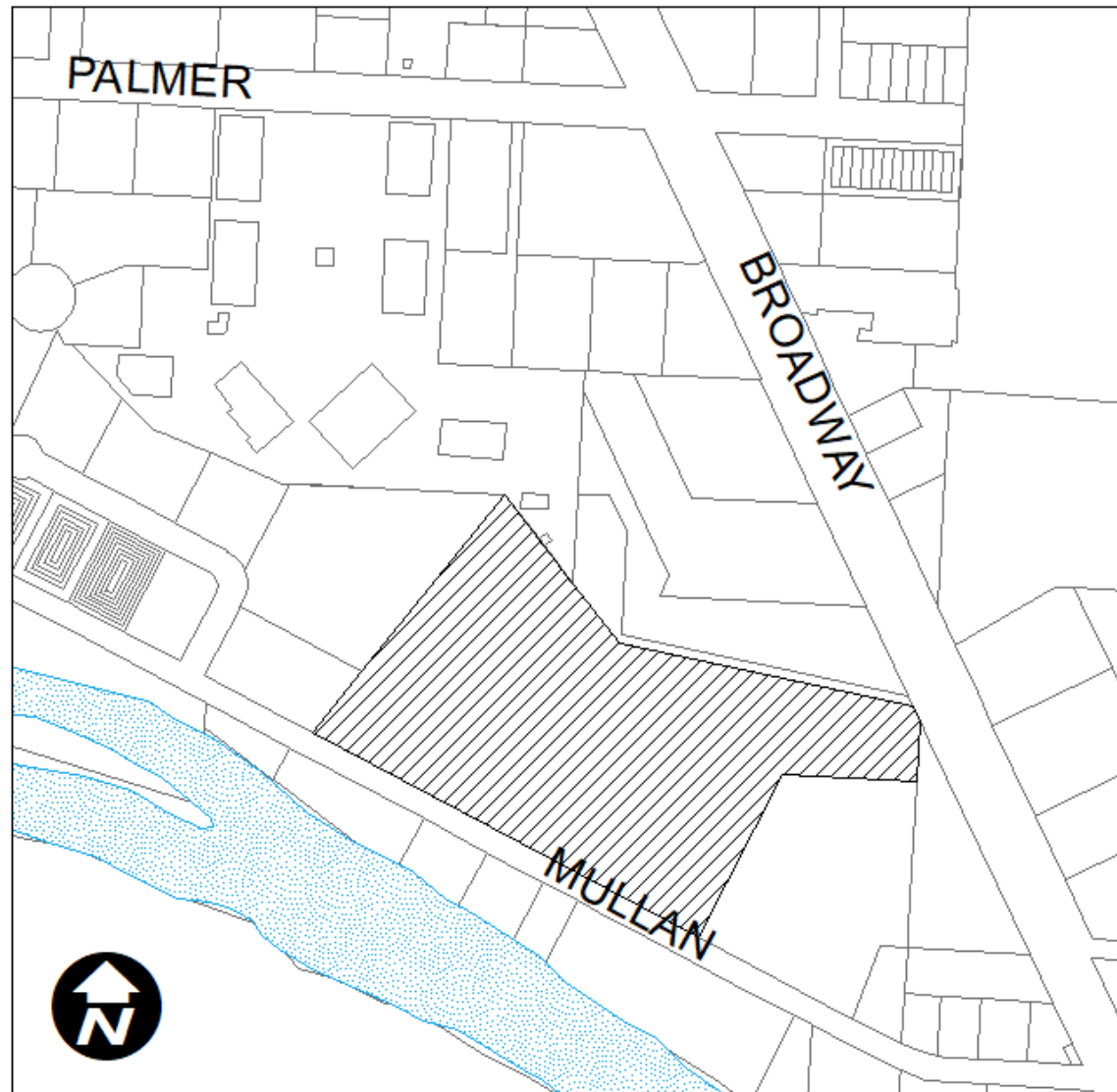
## Title 20, Section 20.85.095

- Government agencies may **use public land contrary to local zoning.**
- Agency = local government = **Missoula County**
- When this happens, a public hearing is required to allow for comment
- **Council does not have the power to deny or condition** the request.

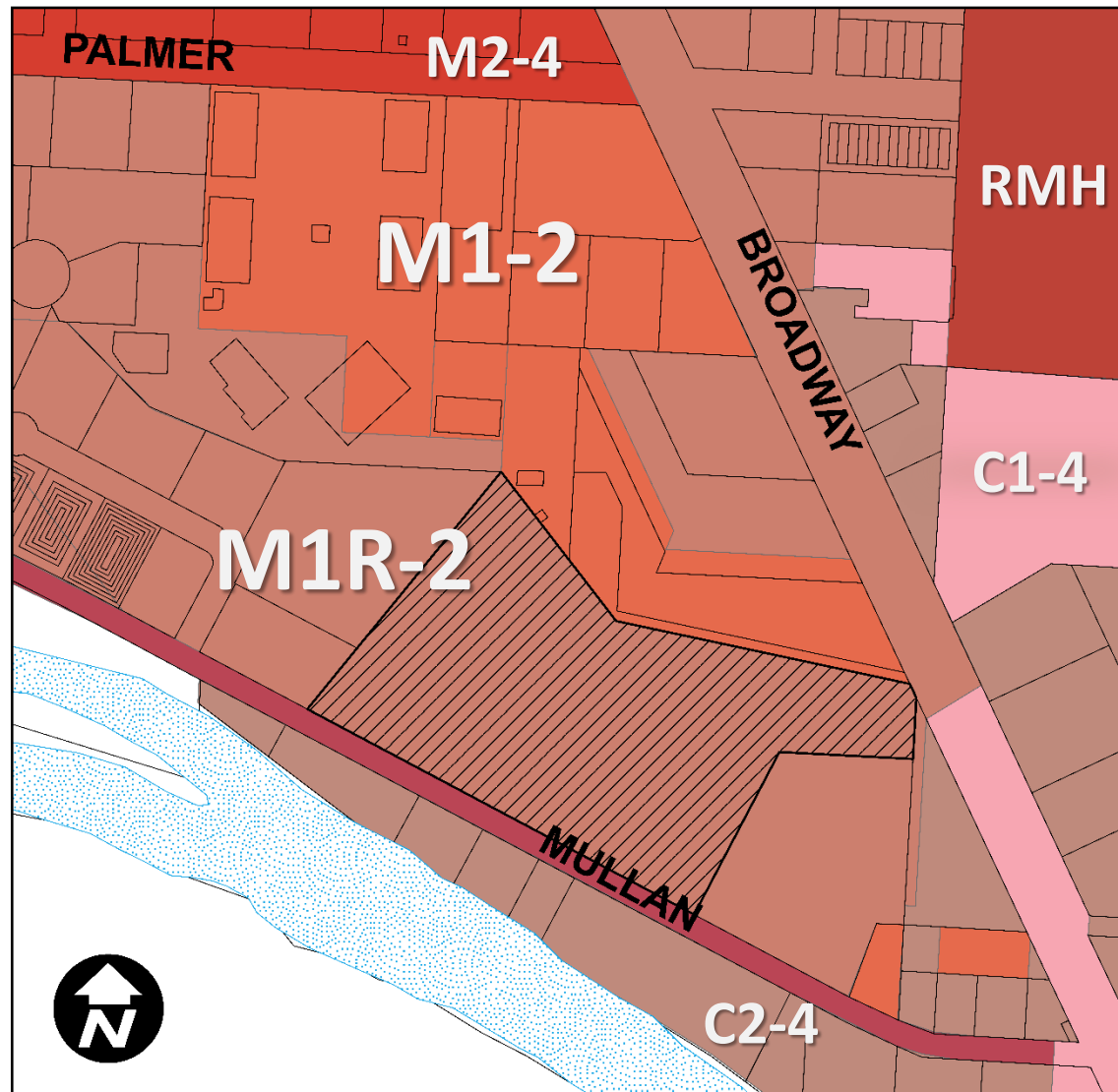
# Missoula's Shelters



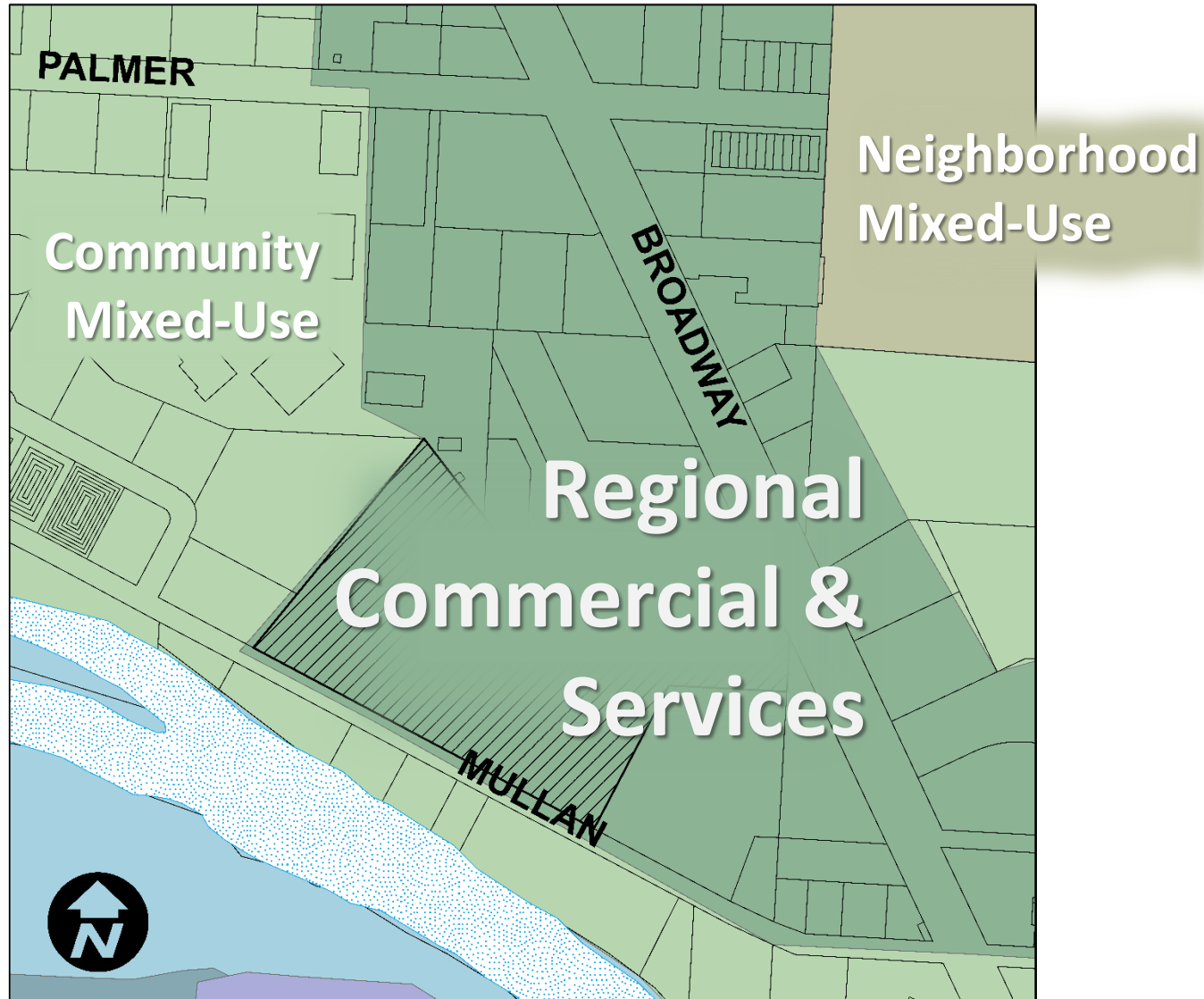
# Property Location



# Zoning Map

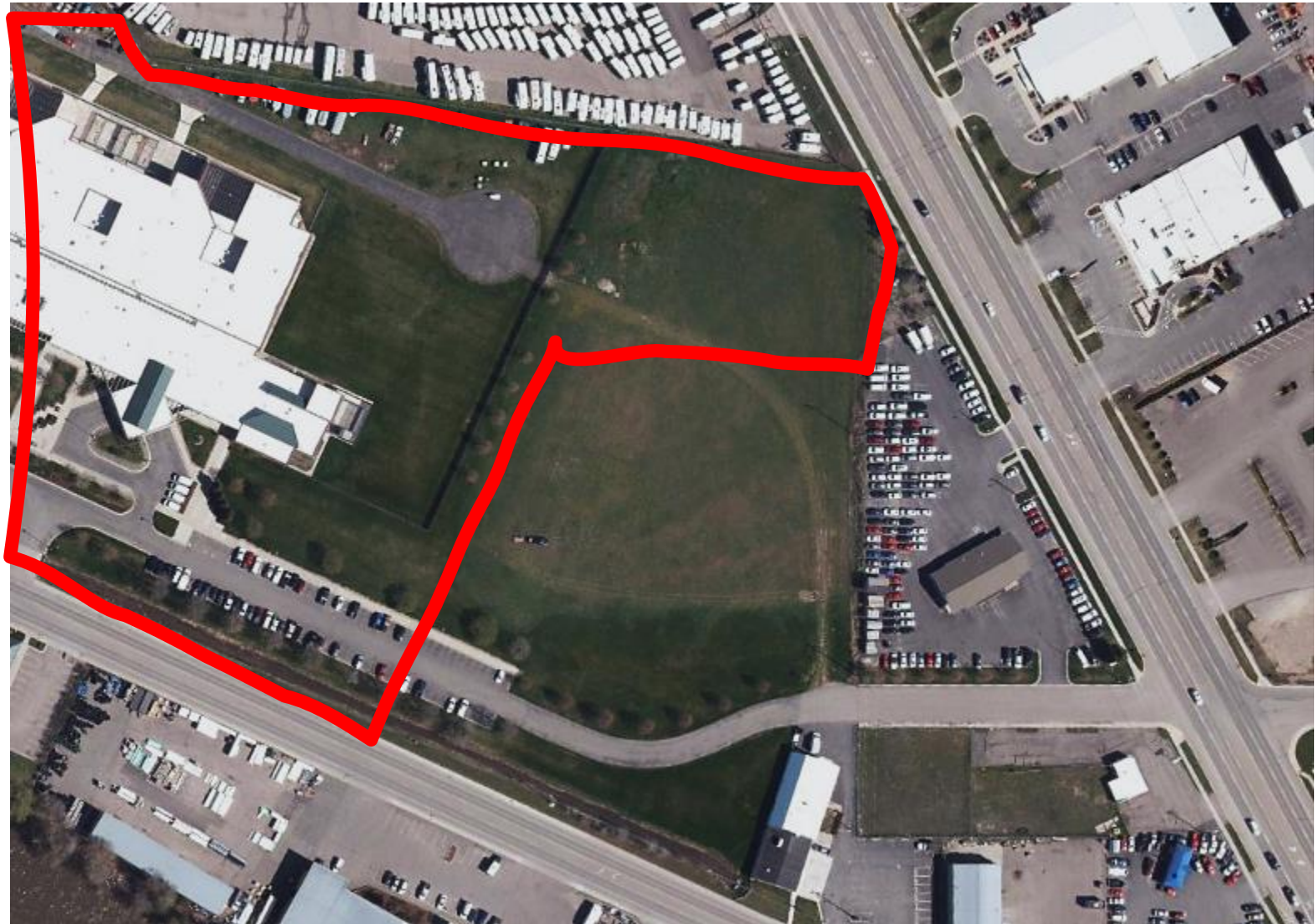


# Growth Policy Map





# Existing Site: Aerial





# Proposed Location

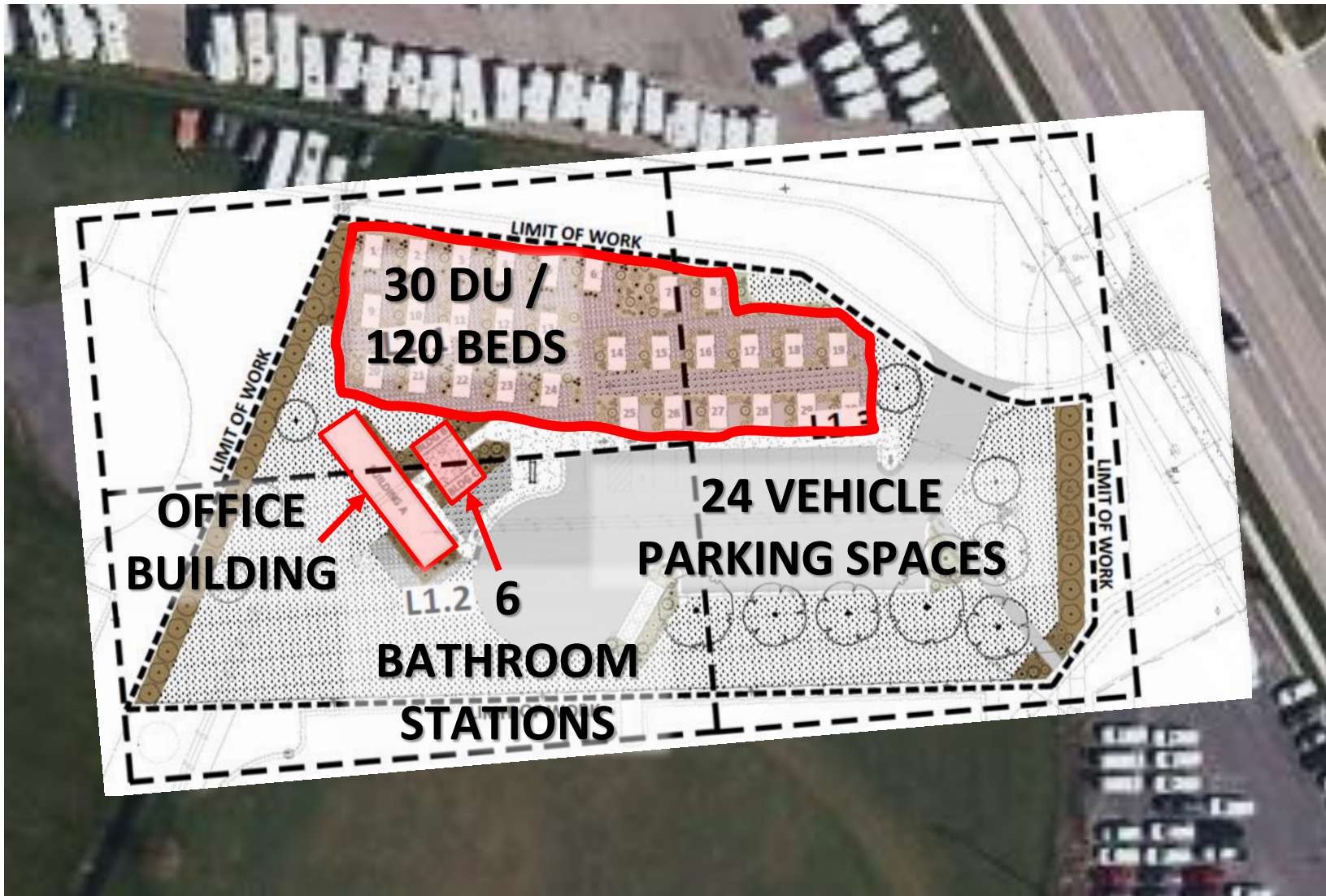




# Proposed Location



# Proposal





# Proposal



# Title 20 Use Classifications



## Temporary Uses

“occasional, temporary  
uses and activities”

[20.40.130]

## Group Living

“residential use of a dwelling  
(other than a ‘household’)  
providing communal kitchen &  
dining.”

[20.105.020.B]

## Emergency Homeless Shelter

“temporary shelter for  
homeless persons on a  
day-by-day basis.”

[20.105.030.N]



# Use Classification Requirements



1. storage locker / bed  
20.40.045.C.1 – Emergency Shelter
2. 90-day limit  
20.40.130.G.2 – Temporary
3. define length of time  
20.40.130.G.3 – Temporary
4. protected long-term bike storage  
20.60.090.D – Parking
5. landscape island / 135' in parking lots  
20.65.40 – Landscaping
6. non-chain-link buffer between residential & non-residential uses  
20.65.060.B.2 – Landscaping
7. screen mechanical equipment  
20.65.070.B – Landscaping
8. screen storage containers  
20.65.070.B.6 – Landscaping
9. 50% max. mineral mulch  
20.65.080.E – Landscaping
10. chain-link is noncompliant material  
20.65.080.G – Landscaping

# Use Classification Alternatives



## Dev. 1

No variations or alterations  
permitted to storage locker  
design

20.40.045

## Dev. 2-3

No variations or alterations  
permitted to 90-day limit

20.40.130

## Dev. 4

Variations & alterations  
permitted through Admin.  
Adjustment

20.60.090

## Dev. 5-10

Variations & alterations  
permitted through DRB or MT  
Landscape Architect

20.65

# Motion & Action



## Staff Recommended Motion:

None.

## Action Required of Council:

None.