

Figure 1: Clark Fork Islands Orientation Map DRAFT#1

Legend

- City, County Trails
- Streets

Conservation_Lands

Owner, Name

- Private, Stahl easement
- City, Clouse easement
- City, Dinsmore
- City, Clouse
- City, Wagon Wheel
- City, Kolendich approximate
- City, Tower Street
- City, Wastewater approximate
- County, Dinsmore

Map Labels:

- General location of Hybrid Poplar Farm Lease w/Clouse Family
- Garden City Compost
- Wastewater Treatment Plant
- Garden City Ponds
- North Bank Slough
- POTENTIAL FUTURE EXPANSION OF MILWAUKEE LINE COMMUTER TRAIL
- Tower St. Conservation Area Trailhead
- Milwaukee Line Commuter Trail
- Streets: HOWARD ST, STONE BROOK DR, KECK ST, CHANNEL DR, TOWER ST, NANCY DR, LOU DR, FLAMINGO DR, STONEST, CHARLESTON ST, SUMMERFIELD DR, VERANDA WAY, RTA ST, JUNEAU DR, JUNEAU CT, EMERY PL, VAQUEROS CT, GLEASON ST, S 3RD ST W, S 4TH ST W, BENTLEY PARK LOOP, S DAVIS ST, N DAVIS ST, N RESERVE ST, KRISTY DR, HAMILTON WAY, RODERICK WAY, N GROVE ST, CHANCE LN, HOME HARVEST LOOP, QUINN CT, LARKIN DR, S GROVE ST, S 2ND ST W, S 1ST ST W, S 5TH ST W, S 6TH ST W, S 7TH ST W, S 8TH ST W, S 9TH ST W, S 10TH ST W, S 11TH ST W, S 12TH ST W, S 13TH ST W, S 14TH ST W, S 15TH ST W, S 16TH ST W, S 17TH ST W, S 18TH ST W, S 19TH ST W, S 20TH ST W, S 21ST ST W, S 22ND ST W, S 23RD ST W, S 24TH ST W, S 25TH ST W, S 26TH ST W, S 27TH ST W, S 28TH ST W, S 29TH ST W, S 30TH ST W, S 31ST ST W, S 32ND ST W, S 33RD ST W, S 34TH ST W, S 35TH ST W, S 36TH ST W, S 37TH ST W, S 38TH ST W, S 39TH ST W, S 40TH ST W, S 41ST ST W, S 42ND ST W, S 43RD ST W, S 44TH ST W, S 45TH ST W, S 46TH ST W, S 47TH ST W, S 48TH ST W, S 49TH ST W, S 50TH ST W, S 51ST ST W, S 52ND ST W, S 53RD ST W, S 54TH ST W, S 55TH ST W, S 56TH ST W, S 57TH ST W, S 58TH ST W, S 59TH ST W, S 60TH ST W, S 61ST ST W, S 62ND ST W, S 63RD ST W, S 64TH ST W, S 65TH ST W, S 66TH ST W, S 67TH ST W, S 68TH ST W, S 69TH ST W, S 70TH ST W, S 71ST ST W, S 72ND ST W, S 73RD ST W, S 74TH ST W, S 75TH ST W, S 76TH ST W, S 77TH ST W, S 78TH ST W, S 79TH ST W, S 80TH ST W, S 81ST ST W, S 82ND ST W, S 83RD ST W, S 84TH ST W, S 85TH ST W, S 86TH ST W, S 87TH ST W, S 88TH ST W, S 89TH ST W, S 90TH ST W, S 91ST ST W, S 92ND ST W, S 93RD ST W, S 94TH ST W, S 95TH ST W, S 96TH ST W, S 97TH ST W, S 98TH ST W, S 99TH ST W, S 100TH ST W, S 101ST ST W, S 102ND ST W, S 103RD ST W, S 104TH ST W, S 105TH ST W, S 106TH ST W, S 107TH ST W, S 108TH ST W, S 109TH ST W, S 110TH ST W, S 111ST ST W, S 112ND ST W, S 113RD ST W, S 114TH ST W, S 115TH ST W, S 116TH ST W, S 117TH ST W, S 118TH ST W, S 119TH ST W, S 120TH ST W, S 121ST ST W, S 122ND ST W, S 123RD ST W, S 124TH ST W, S 125TH ST W, S 126TH ST W, S 127TH ST W, S 128TH ST W, S 129TH ST W, S 130TH ST W, S 131ST ST W, S 132ND ST W, S 133RD ST W, S 134TH ST W, S 135TH ST W, S 136TH ST W, S 137TH ST W, S 138TH ST W, S 139TH ST W, S 140TH ST W, S 141ST ST W, S 142ND ST W, S 143RD ST W, S 144TH ST W, S 145TH ST W, S 146TH ST W, S 147TH ST W, S 148TH ST W, S 149TH ST W, S 150TH ST W, S 151ST ST W, S 152ND ST W, S 153RD ST W, S 154TH ST W, S 155TH ST W, S 156TH ST W, S 157TH ST W, S 158TH ST W, S 159TH ST W, S 160TH ST W, S 161ST ST W, S 162ND ST W, S 163RD ST W, S 164TH ST W, S 165TH ST W, S 166TH ST W, S 167TH ST W, S 168TH ST W, S 169TH ST W, S 170TH ST W, S 171ST ST W, S 172ND ST W, S 173RD ST W, S 174TH ST W, S 175TH ST W, S 176TH ST W, S 177TH ST W, S 178TH ST W, S 179TH ST W, S 180TH ST W, S 181ST ST W, S 182ND ST W, S 183RD ST W, S 184TH ST W, S 185TH ST W, S 186TH ST W, S 187TH ST W, S 188TH ST W, S 189TH ST W, S 190TH ST W, S 191ST ST W, S 192ND ST W, S 193RD ST W, S 194TH ST W, S 195TH ST W, S 196TH ST W, S 197TH ST W, S 198TH ST W, S 199TH ST W, S 200TH ST W, S 201ST ST W, S 202ND ST W, S 203RD ST W, S 204TH ST W, S 205TH ST W, S 206TH ST W, S 207TH ST W, S 208TH ST W, S 209TH ST W, S 210TH ST W, S 211ST ST W, S 212ND ST W, S 213RD ST W, S 214TH ST W, S 215TH ST W, S 216TH ST W, S 217TH ST W, S 218TH ST W, S 219TH ST W, S 220TH ST W, S 221ST ST W, S 222ND ST W, S 223RD ST W, S 224TH ST W, S 225TH ST W, S 226TH ST W, S 227TH ST W, S 228TH ST W, S 229TH ST W, S 230TH ST W, S 231ST ST W, S 232ND ST W, S 233RD ST W, S 234TH ST W, S 235TH ST W, S 236TH ST W, S 237TH ST W, S 238TH ST W, S 239TH ST W, S 240TH ST W, S 241ST ST W, S 242ND ST W, S 243RD ST W, S 244TH ST W, S 245TH ST W, S 246TH ST W, S 247TH ST W, S 248TH ST W, S 249TH ST W, S 250TH ST W, S 251ST ST W, S 252ND ST W, S 253RD ST W, S 254TH ST W, S 255TH ST W, S 256TH ST W, S 257TH ST W, S 258TH ST W, S 259TH ST W, S 260TH ST W, S 261ST ST W, S 262ND ST W, S 263RD ST W, S 264TH ST W, S 265TH ST W, S 266TH ST W, S 267TH ST W, S 268TH ST W, S 269TH ST W, S 270TH ST W, S 271ST ST W, S 272ND ST W, S 273RD ST W, S 274TH ST W, S 275TH ST W, S 276TH ST W, S 277TH ST W, S 278TH ST W, S 279TH ST W, S 280TH ST W, S 281ST ST W, S 282ND ST W, S 283RD ST W, S 284TH ST W, S 285TH ST W, S 286TH ST W, S 287TH ST W, S 288TH ST W, S 289TH ST W, S 290TH ST W, S 291ST ST W, S 292ND ST W, S 293RD ST W, S 294TH ST W, S 295TH ST W, S 296TH ST W, S 297TH ST W, S 298TH ST W, S 299TH ST W, S 300TH ST W, S 301ST ST W, S 302ND ST W, S 303RD ST W, S 304TH ST W, S 305TH ST W, S 306TH ST W, S 307TH ST W, S 308TH ST W, S 309TH ST W, S 310TH ST W, S 311ST ST W, S 312ND ST W, S 313RD ST W, S 314TH ST W, S 315TH ST W, S 316TH ST W, S 317TH ST W, S 318TH ST W, S 319TH ST W, S 320TH ST W, S 321ST ST W, S 322ND ST W, S 323RD ST W, S 324TH ST W, S 325TH ST W, S 326TH ST W, S 327TH ST W, S 328TH ST W, S 329TH ST W, S 330TH ST W, S 331ST ST W, S 332ND ST W, S 333RD ST W, S 334TH ST W, S 335TH ST W, S 336TH ST W, S 337TH ST W, S 338TH ST W, S 339TH ST W, S 340TH ST W, S 341ST ST W, S 342ND ST W, S 343RD ST W, S 344TH ST W, S 345TH ST W, S 346TH ST W, S 347TH ST W, S 348TH ST W, S 349TH ST W, S 350TH ST W, S 351ST ST W, S 352ND ST W, S 353RD ST W, S 354TH ST W, S 355TH ST W, S 356TH ST W, S 357TH ST W, S 358TH ST W, S 359TH ST W, S 360TH ST W, S 361ST ST W, S 362ND ST W, S 363RD ST W, S 364TH ST W, S 365TH ST W, S 366TH ST W, S 367TH ST W, S 368TH ST W, S 369TH ST W, S 370TH ST W, S 371ST ST W, S 372ND ST W, S 373RD ST W, S 374TH ST W, S 375TH ST W, S 376TH ST W, S 377TH ST W, S 378TH ST W, S 379TH ST W, S 380TH ST W, S 381ST ST W, S 382ND ST W, S 383RD ST W, S 384TH ST W, S 385TH ST W, S 386TH ST W, S 387TH ST W, S 388TH ST W, S 389TH ST W, S 390TH ST W, S 391ST ST W, S 392ND ST W, S 393RD ST W, S 394TH ST W, S 395TH ST W, S 396TH ST W, S 397TH ST W, S 398TH ST W, S 399TH ST W, S 400TH ST W, S 401ST ST W, S 402ND ST W, S 403RD ST W, S 404TH ST W, S 405TH ST W, S

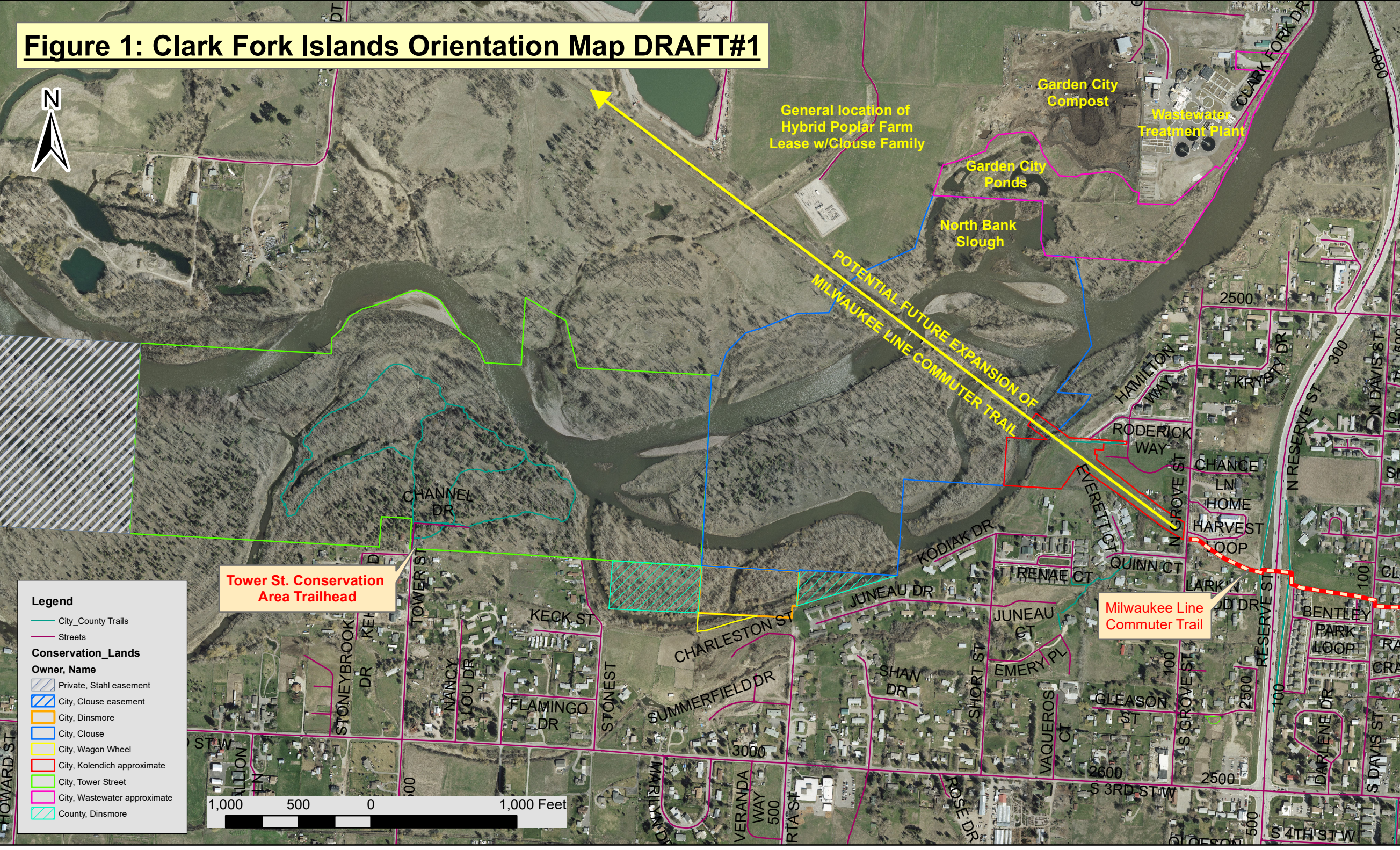
[illegible]

Figure 1: Clark Fork Islands Orientation Map DRAFT#1

This map illustrates the orientation of the Clark Fork Islands, highlighting various geographical features, infrastructure, and land ownership. The Clark Fork River flows through the center, with several islands and sloughs. Key locations and features include:

- General location of Hybrid Poplar Farm Lease w/Clouse Family**: Located near the top center.
- Garden City Compost** and **Wastewater Treatment Plant**: Situated in the upper right quadrant.
- Garden City Ponds** and **North Bank Slough**: Located south of the wastewater treatment plant.
- POTENTIAL FUTURE EXPANSION OF MILWAUKEE LINE COMMUTER TRAIL**: Indicated by a yellow arrow pointing towards the top left.
- Tower St. Conservation Area Trailhead**: Highlighted in orange at the bottom center.
- Milwaukee Line Commuter Trail**: Shown as a red dashed line running along the riverbank.
- Streets and Roads**: Numerous streets are labeled, including Howard St, Tower St, Charleston St, Summerfield Dr, Veranda Way, RTA St, Rose Dr, Short St, Juneau Ct, Emery Pl, Vaqueros Ct, Gleason St, S 3rd St W, S 4th St W, Reserve St, N Davis St, Bentley Park Loop, and R A Cra.
- Conservation Lands**: Outlined in green, showing areas like Tower St. Conservation Area Trailhead and other riparian zones.
- Legend**: Provides information on City/County Trails, Streets, Conservation Lands, and Owner names (Private, Stahl easement; City, Clouse easement; City, Dinsmore; City, Clouse; City, Wagon Wheel; City, Kolendich approximate; City, Tower Street; City, Wastewater approximate; County, Dinsmore).
- Scale**: A scale bar indicates distances from 0 to 1,000 Feet.

[illegible]

Figure 1: Clark Fork Islands Orientation Map DRAFT#1

Legend

- City, County Trails
- Streets

Conservation_Lands

Owner, Name

- Private, Stahl easement
- City, Clouse easement
- City, Dinsmore
- City, Clouse
- City, Wagon Wheel
- City, Kolendich approximate
- City, Tower Street
- City, Wastewater approximate
- County, Dinsmore

Map Labels:

- General location of Hybrid Poplar Farm Lease w/Clouse Family
- Garden City Compost
- Wastewater Treatment Plant
- Garden City Ponds
- North Bank Slough
- POTENTIAL FUTURE EXPANSION OF MILWAUKEE LINE COMMUTER TRAIL
- Tower St. Conservation Area Trailhead
- Milwaukee Line Commuter Trail
- Streets: CHANNEL DR, TOWER ST, KECK ST, FLAMINGO DR, STONEST, CHARLESTON ST, JUNEAU DR, KODIAK DR, EVERETT CT, QUINN CT, LARKIN DR, BENTLEY, PARK LOOP, DARLENE DR, S DAVIS ST, S 3RD ST W, S 4TH ST W, RESERVE ST, N DAVIS ST, N GROVE ST, CHANGE LN, HOME HARVEST, RODERICK WAY, HAMILTON WAY, KRISTY DR, 2500, 300, 100, 2500, 100, 500, 1000 Feet

Figure 1: Clark Fork Islands Orientation Map DRAFT#1

This map illustrates the Clark Fork River and its surrounding areas, including various streets, trails, and land ownership. Key features include the Milwaukee Line Commuter Trail, Garden City Ponds, and the Tower St. Conservation Area Trailhead. The map includes a legend for trails and land ownership, a scale bar, and a north arrow.

Legend

- City, County Trails
- Streets

Conservation_Lands

Owner, Name

- Private, Stahl easement
- City, Clouse easement
- City, Dinsmore
- City, Clouse
- City, Wagon Wheel
- City, Kolendich approximate
- City, Tower Street
- City, Wastewater approximate
- County, Dinsmore

Scale: 1,000 500 0 1,000 Feet

Key Locations and Features:

- Garden City Compost
- Wastewater Treatment Plant
- Garden City Ponds
- North Bank Slough
- POTENTIAL FUTURE EXPANSION OF MILWAUKEE LINE COMMUTER TRAIL
- Tower St. Conservation Area Trailhead
- Milwaukee Line Commuter Trail
- General location of Hybrid Poplar Farm Lease w/Clouse Family

Streets: CHANNEL DR, TOWER ST, KECK ST, STONEYBROOK DR, NANCY DR, LOU DR, FLAMINGO DR, STONEST, CHARLESTON ST, JUNEAU DR, KODIAK DR, JUNEAU CT, EMERY PL, VAQUEROS CT, GLEASON ST, S GROVE ST, S 3RD ST W, S 4TH ST W, BENTLEY PARK LOOP, S DAVIS ST, N DAVIS ST, N RESERVE ST, KRISTY DR, HAMILTON WAY, RODERICK WAY, N GROVE ST, CHANCE LN, HOME HARVEST LOOP, QUINN CT, LARKIN DR, JUNEAU DR, JUNEAU CT, EMERY PL, VAQUEROS CT, GLEASON ST, S GROVE ST, S 3RD ST W, S 4TH ST W, BENTLEY PARK LOOP, S DAVIS ST, N DAVIS ST, N RESERVE ST, KRISTY DR, HAMILTON WAY, RODERICK WAY, N GROVE ST, CHANCE LN, HOME HARVEST LOOP, QUINN CT, LARKIN DR.

[illegible][illegible]

- [illegible]

[illegible]

Figure 1: Clark Fork Islands Orientation Map DRAFT#1

This map illustrates the Clark Fork River and its surrounding areas, including various streets, trails, and land ownership. Key features include the Milwaukee Line Commuter Trail, Garden City Ponds, and the Tower St. Conservation Area Trailhead. The map includes a legend for trails and land ownership, a scale bar, and a north arrow.

Legend

- City, County Trails
- Streets

Conservation_Lands

Owner, Name

- Private, Stahl easement
- City, Clouse easement
- City, Dinsmore
- City, Clouse
- City, Wagon Wheel
- City, Kolendich approximate
- City, Tower Street
- City, Wastewater approximate
- County, Dinsmore

Scale: 1,000 500 0 1,000 Feet

Key Locations and Features:

- General location of Hybrid Poplar Farm Lease w/Clouse Family
- Garden City Compost
- Wastewater Treatment Plant
- Garden City Ponds
- North Bank Slough
- POTENTIAL FUTURE EXPANSION OF MILWAUKEE LINE COMMUTER TRAIL
- Tower St. Conservation Area Trailhead
- Milwaukee Line Commuter Trail

Streets: CHANNEL DR, TOWER ST, STONEYBROOK DR, KECK ST, FLAMINGO DR, STONEST, CHARLESTON ST, JUNEAU DR, KODIAK DR, JUNEAU CT, EMERY PL, VAQUEROS CT, GLEASON ST, S GROVE ST, S 3RD ST W, S 4TH ST W, BENTLEY PARK LOOP, S DAVIS ST, N DAVIS ST, N RESERVE ST, KRISTY DR, HAMILTON WAY, RODERICK WAY, N GROVE ST, CHANCE LN, HOME HARVEST LOOP, QUINN CT, LARKIN DR, JUNEAU DR, JUNEAU CT, EMERY PL, VAQUEROS CT, GLEASON ST, S GROVE ST, S 3RD ST W, S 4TH ST W, BENTLEY PARK LOOP, S DAVIS ST, N DAVIS ST, N RESERVE ST, KRISTY DR, HAMILTON WAY, RODERICK WAY, N GROVE ST, CHANCE LN, HOME HARVEST LOOP, QUINN CT, LARKIN DR.

Figure 1: Clark Fork Islands Orientation Map DRAFT#1

This map illustrates the Clark Fork River and its surrounding areas, including various streets, trails, and land ownership. Key features include the Milwaukee Line Commuter Trail, Garden City Ponds, and the Tower St. Conservation Area Trailhead. The map includes a legend for trails and land ownership, a scale bar, and a north arrow.

Legend

- City, County Trails
- Streets

Conservation_Lands

Owner, Name

- Private, Stahl easement
- City, Clouse easement
- City, Dinsmore
- City, Clouse
- City, Wagon Wheel
- City, Kolendich approximate
- City, Tower Street
- City, Wastewater approximate
- County, Dinsmore

Scale: 1,000 500 0 1,000 Feet

Key Locations and Features:

- General location of Hybrid Poplar Farm Lease w/Clouse Family
- Garden City Compost
- Wastewater Treatment Plant
- Garden City Ponds
- North Bank Slough
- POTENTIAL FUTURE EXPANSION OF MILWAUKEE LINE COMMUTER TRAIL
- Tower St. Conservation Area Trailhead
- Milwaukee Line Commuter Trail

Streets: CHANNEL DR, TOWER ST, STONEYBROOK DR, KECK ST, FLAMINGO DR, STONEST, CHARLESTON ST, JUNEAU DR, KODIAK DR, JUNEAU CT, EMERY PL, VAQUEROS CT, GLEASON ST, S GROVE ST, S 3RD ST W, S 4TH ST W, BENTLEY PARK LOOP, S DAVIS ST, N DAVIS ST, N RESERVE ST, KRISTY DR, HAMILTON WAY, RODERICK WAY, N GROVE ST, CHANCE LN, HOME HARVEST LOOP, QUINN CT, LARKIN DR, JUNEAU DR, JUNEAU CT, EMERY PL, VAQUEROS CT, GLEASON ST, S GROVE ST, S 3RD ST W, S 4TH ST W, BENTLEY PARK LOOP, S DAVIS ST, N DAVIS ST, N RESERVE ST, KRISTY DR, HAMILTON WAY, RODERICK WAY, N GROVE ST, CHANCE LN, HOME HARVEST LOOP, QUINN CT, LARKIN DR.

[illegible]

- [illegible]