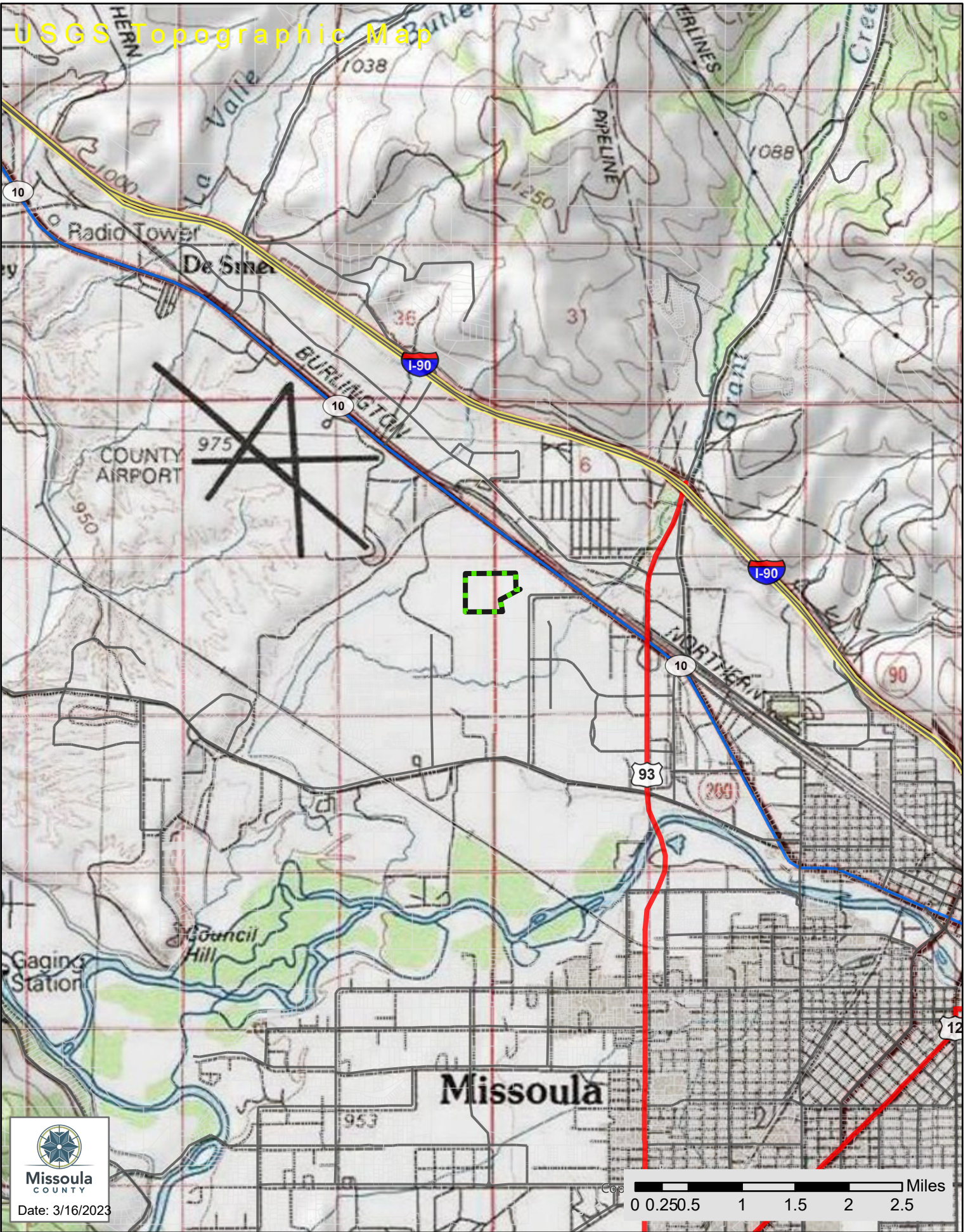


USGS Topographic Map



Missoula
COUNTY
Date: 3/16/2023

Map Center: X: -114.06165 - Y: 46.90117

The material displayed on this page is informational and should be used for reference only. No reliance should be placed thereon without verification by the user. Missoula County does not warrant that the information is either complete or accurate. No representation, warranties or covenants of any kind are made by Missoula County. Before acting on the information contained on this page the user should consult original documents.