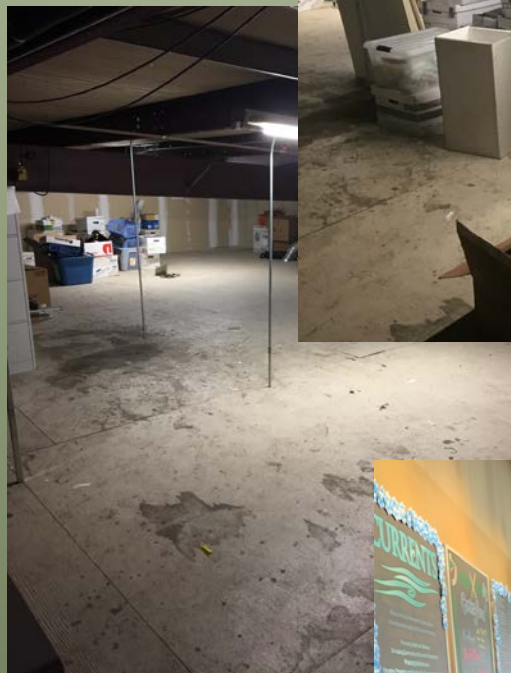


Parks & Recreation

City of Missoula • 600 Cregg Lane • 721-PARK

Celebrating
2019 Highlights
2020 Priorities



HIGHLIGHTS – BUSINESS

W-desk – efficiencies, tracking,
informing decisions,

E-scribe transition for public meetings

Records, including shredding

Implement C&S ML , including bringing
on Jolanda Cummings as new
accounting Technician

Move all expense authority to Park
District #1

77% increase of online Web Trac sales
FY18 to FY19



HIGHLIGHTS – PLANNING & PROJECTS

Rose and 44 Ranch Playgrounds

Westside Park – lease and plan

Bike Skills Parks

Trail extensions – FG/PF & Bitterroot
+ Russell St connections

Dog Parks – Hellgate, FMRP, MRL

Ninkpata & Whitaker Plans

Downtown Master Plan – Parks &
Trails

MDT Projects – Russell, Van Buren,
Higgins, Grant Creek @ I-90

FEMA Flood Repairs – Tower St.



HIGHLIGHTS – OPEN SPACE

Filled Open Space Program Manager position

Bluebird property North Hills

Trail parcel – E Broadway

Updated Open Space Ordinance

New Open Space Plan adopted



HIGHLIGHTS – PARKS & GREENWAYS

VFDs for Silver Park

Increase PAM to \$100K/year

Montana Rail Link Park

Playgrounds - 44 Ranch, Rose

Trails & Greenways funding support

Climate Smart Shelter

More and improved connections/extensions

Numerous enhancements



HIGHLIGHTS - FORESTRY

Memorial trees and plaque installations: 13

Trees Pruned 1369

Storm Damage Calls/On-line submittals: 80

Trees Planted by staff: 201

Trees Planted by Trees for Missoula volunteers: 65

Trees pruned for sign clearance: 180

Tree Inspections: 145

Trees Removed per routine risk reduction: 56

Injuries 0

Open Space Reforestation Projects

UF Program Specialist II



HIGHLIGHTS – CONSERVATION LANDS

West Broadway Island opens

Bike Skills parks opens

Conservation & Stewardship
Mill Levy passes

Rattlesnake Dam restoration
fully funded!

Trailhead inventory complete!

Added Bluebird Parcel in Grant
Creek

Expansion of cooperative
projects with City Utility depts.



HIGHLIGHTS - RECREATION

Program growth - Sprouts, Camps,

Partnerships – MMAC, MCPS,

Reaching new populations – Senior Olympics, Generations at Plan,

Fall Family Fest, Kids fest, Little Dipper Run

FMRP fully operational and well used

Scholarships – 244 families, \$33670

Shelter Rentals & Permits - 890

HIGHLIGHTS -AQUATICS

Facilitate evolution of the FMRP management plan by expansion of food services to include the Home Plate Grill.

Serving as the venue for the largest Swim Meet in Montana and one of the largest non-championship meets in the Northwest helping to drive Missoula's economic vitality and contributes to Missoula establishing itself as a regional sports capital.

Foster existing partnerships by operating the 50m at Splash during the shoulder seasons allows us to meet MAC's need for swim time after losing space at other, indoor facilities.

Show success at advocating for additional funding and CIP planning by increased PAM for aquatics

Excellence in budget management

Updated/friendly signage





TRENDS, PLANS, CHANGES

Growth Policy

Open Space, LRTP,

Climate Change, Climate
Resiliency,

Master Park Plan, CL & UF plans,

Need for additional sports fields

Record Development continues

City/Community – Public Works

Ecosystems & Green
Infrastructure

Attainable Housing



OPPORTUNITIES

Invest Health

Downtown Master Plan

Green Infrastructure

Open Space Bond and C&S Mill
Levy

PROST and Public Support

Mullan Master Plan

BUILD grant



PRIORITIES

Master Plan for DT Parks & Trails

NS Ped Crossing

Clark Fork River Restoration & Access

Reforestation & Inventory update

Waterworks Trailhead

RS Dam – removal

Open Space Acquisitions

Implement new budget funds per plans

Recruitment and Retention of great employees

Reduce waste

Expansion of Program Services

Workplace Safety!

Continue to facilitate and empower all citizens to find their Gifts through Parks & Recreation

Glacier Lake in
the RS wilderness



Capturing runoff
to water trees



Permeable
parking

Bank stabilization, fixing a
commuter trail & stormwater
improvements in Greenough park



ECO SYSTEM SERVICES

Parks & Open Space & Urban Forest = Healthy people, habitat & climate resiliency

Increase cooperative projects

Improve existing and implement new outdoor recreation facilities

Expand Green Infrastructure & smart design & water-wise planting

Develop a plant propagation program for the City

Dedicated volunteer corps

Improve public education, and out reach



DEVELOPED PARKS & TRAILS

Additional Staff

- Field Manager
- 2 new Maintenance Workers
- Recreation Facilities Support Functional Work Team

Focused Maintenance Goals

- Gain Efficiencies
- Cooperative Projects
- Differed Maintenance (small PAM)

RECREATION & AQUATICS

► Aquatics

- Institute student tracking program with swim lessons
- Increase hiring pool through partnering with outside agencies; MCPS, Scouts, UM, etc.
- Increase staff retention through redesign of training and orientation approach
- Reduce Refuse at Splash by use of compostable plates & cutlery

➤ Recreation

Maintain and Grow Quality Recreation Programs

Encourage and empower staff growth and development

Increase participation of adult sports

Increased social equity through thoughtful recreation programming





PROJECTS & PLANNING

Projects

- Waterworks Trailhead
- Clark Fork River Access
- Master Planning of Downtown Parks

Open Space

- Identify and pursue new open space projects that meet adopted plans and provide geographic and user diversity as well as inclusivity
- Mt. Dean Stone, Knife River, Milwaukee Trail expansion
- Complete outstanding allocated open space acquisitions
- Foster efficient use of 2018 Open Space Bond funds

Development

- Review future development plans to ensure they meet our adopted plans, mission, and guiding principles
- Mullan Area Master Plan participation
- BUILD Grant design participation

- ▶ GOALS for 2020
- ▶ Work with MDT to complete Van Buren Int. landscaping
- ▶ Advance Comprehensive Plan (PROST) elements – likely focus on Parks and update to Park Asset Management Plan.
- ▶ Provide for California St Bridge graffiti clean up
- ▶ Re-negotiate Penland Park Maintenance Agreement with affected neighbors
- ▶ Finalize boundary adjustment with Holiday Inn
- ▶ Complete GPS conversion for Park & Recreation's Fleet
- ▶ Increase acquisition and use of electric equipment & vehicles
- ▶ Continue to "right size" fleet
- ▶ Continue lowering incidence of accidents by sustaining a safety culture
- ▶ Begin working on NRPA accreditation
- ▶ Obtain safety training tracking software
- ▶ Create leadership development and sustainment trainings for staff and management
- ▶ Tackle "other duties as assigned" with professionalism, positive energy and a smile!

PARK SERVICES & SYSTEMS + SAFETY, TRAINING & FLEET

David Selvage & Gerald Auch





BUSINESS AND ADMINISTRATION

Update Web site and other marketing materials through lens of inclusion, resiliency and equity

Continue developing dashboard capabilities to display appropriate data and facilitate timely and informed management decisions

Move Partners in Parks program administration into Rec Trac system

Work collaboratively with Friends of Missoula Parks to solidify annual and long term goals

Equality



Equity

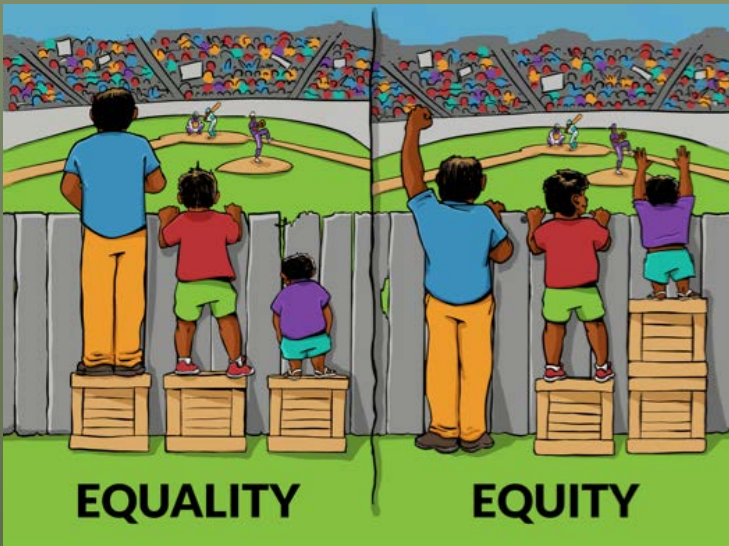


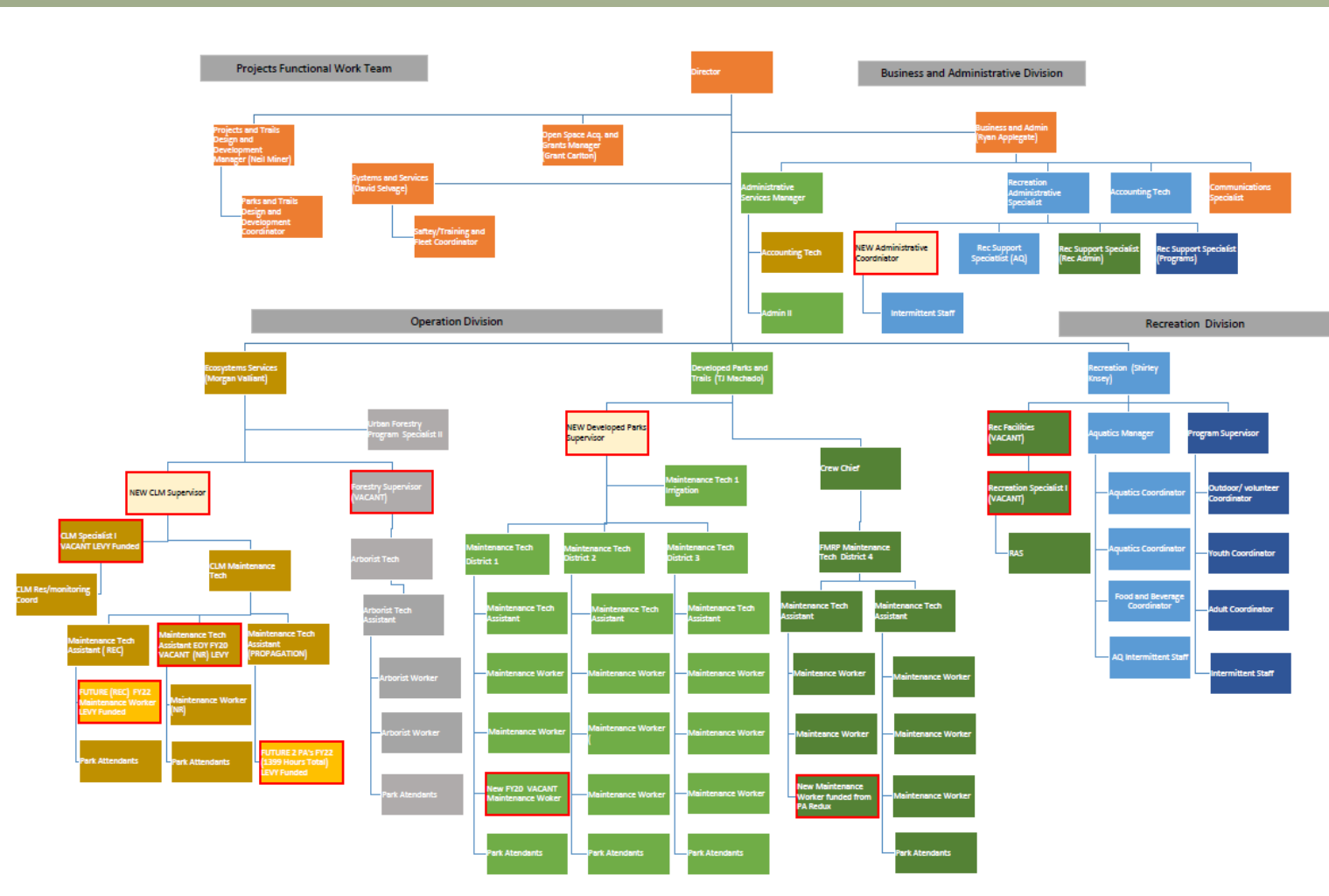
EQUITY AND INCLUSION

NRPA defines

inclusion as **removing barriers**, both physical and theoretical, so

that **all people have an equal opportunity** to enjoy the benefits of parks and recreation.





INCREASING CAPACITY TO SERVE COMMUNITY

Meeting Challenges and Acting on Opportunities to meet the needs and demands of our community, especially those most vulnerable, while protecting and preserving our landscape and our values as a community.

QUESTIONS



Thank you
and Happy
New Year!