



MISSOULA FIRE DEPARTMENT

Fire Initiative Request – 2/28/2024



STRATEGIC INITIATIVES

The City of Missoula's strategic initiatives are important to the Missoula Fire Department's daily operations.



Safety & Wellness



Organizational Excellence



Justice Equity Diversity & Inclusion



Environmental Quality



Economic Health



Community Design & Livability





MISSION

To save lives, protect property, ease pain and suffering.

VISION

To be recognized as the premier public safety organization, respected and admired by our peers and our community as the most effective, innovative, and efficient fire department in the state of Montana and the region.

GUIDING STANDARDS

The National Fire Protection Association (NFPA) creates a standard by which all fire departments are measured. The **NFPA 1710** standard is applied to the Standard for the Organization and Deployment of Fire Suppression Operations, Emergency Medical Operations, and Special Operations to the Public by Career Fire Departments. NFPA standards are developed to be a guideline in which to measure the efficiency of a fire department.

STANDARDS



Number of personnel
required for a structure fire: **16**
(17 w/ aerial)



Number of personnel
required for EMS response: **3**

Medical CPR response: **7**



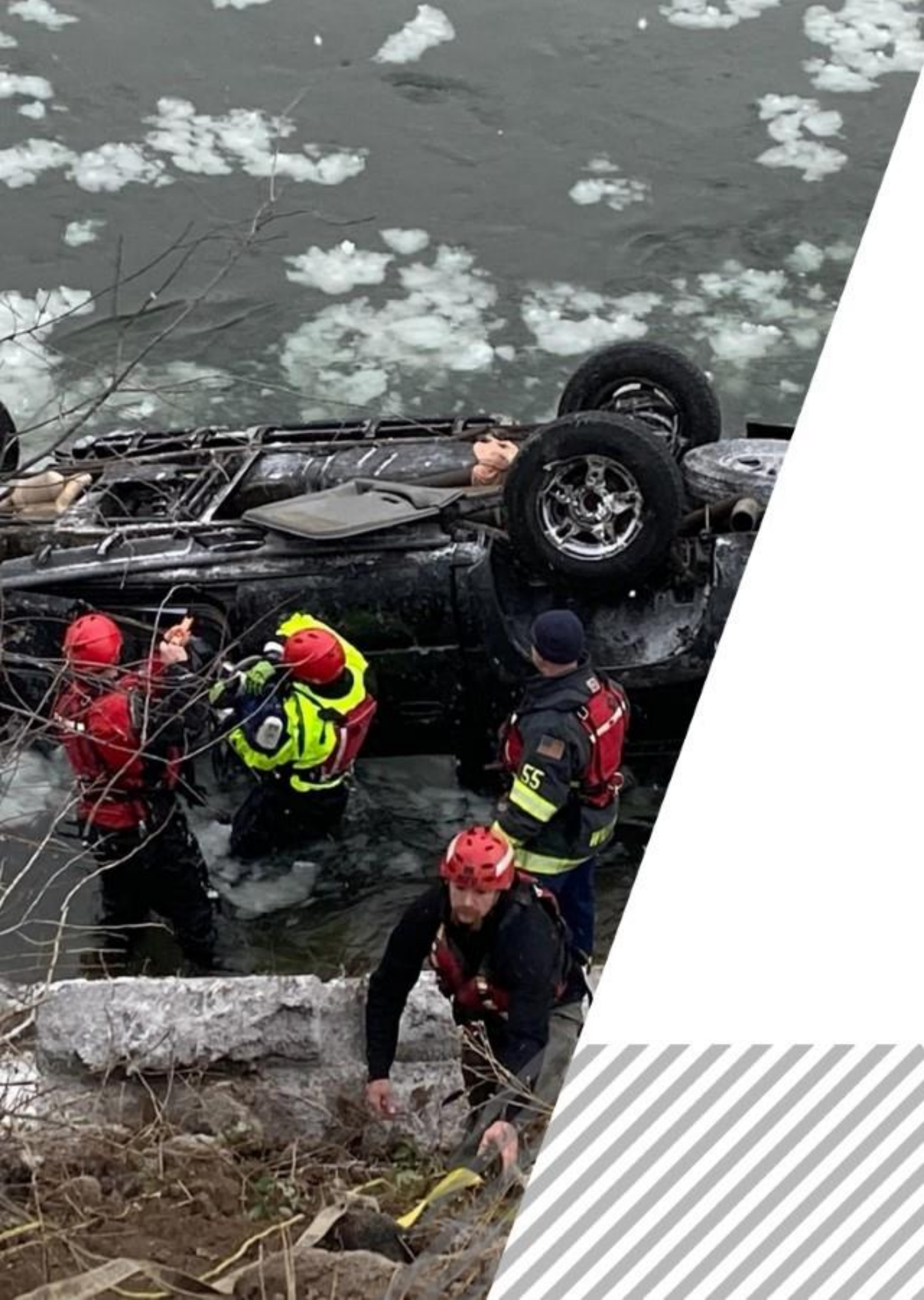
Number of personnel required for
Rescue response:

Vehicle Rescue: **7**

Swift Water Rescue: **13**

High angle/low angle Rescue: **13**

Hazmat Rescue: **7+**



CURRENT SITUATION

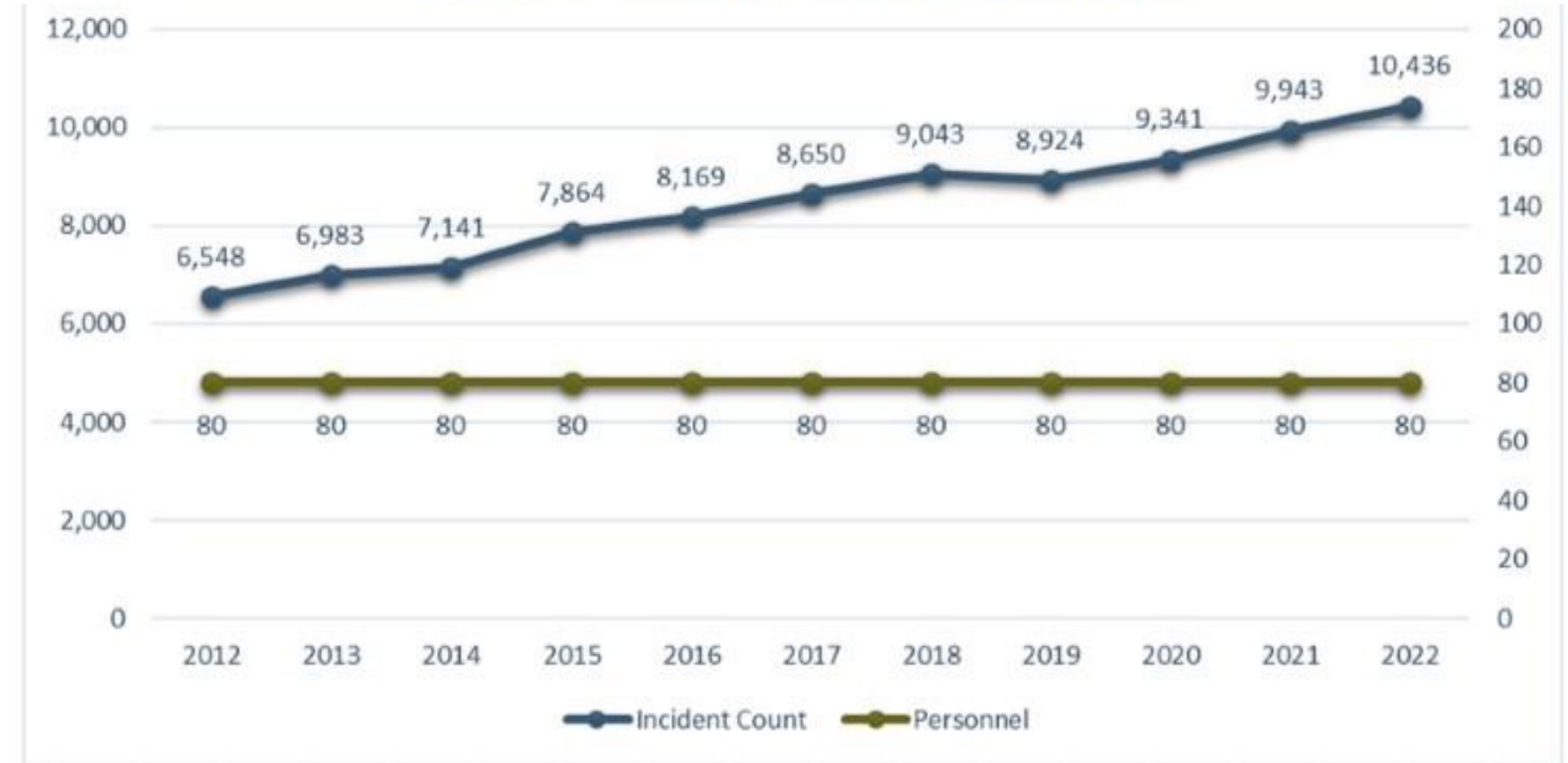
CALL VOLUME, STAFFING RATIOS & COMMUNITY GROWTH

Call volume increased from 6,548 in 2012 to 10,436 in 2022, a 59.37% increase, without an increase in operations staffing.

According to the US Census data, the City of Missoula's population has increased 15.22% since 2010. The US Census estimated the City of Missoula's population to be 76,955 in 2022.

The City of Missoula's limits have also expanded rapidly from 24 square miles in 2008 to 35 square miles currently.

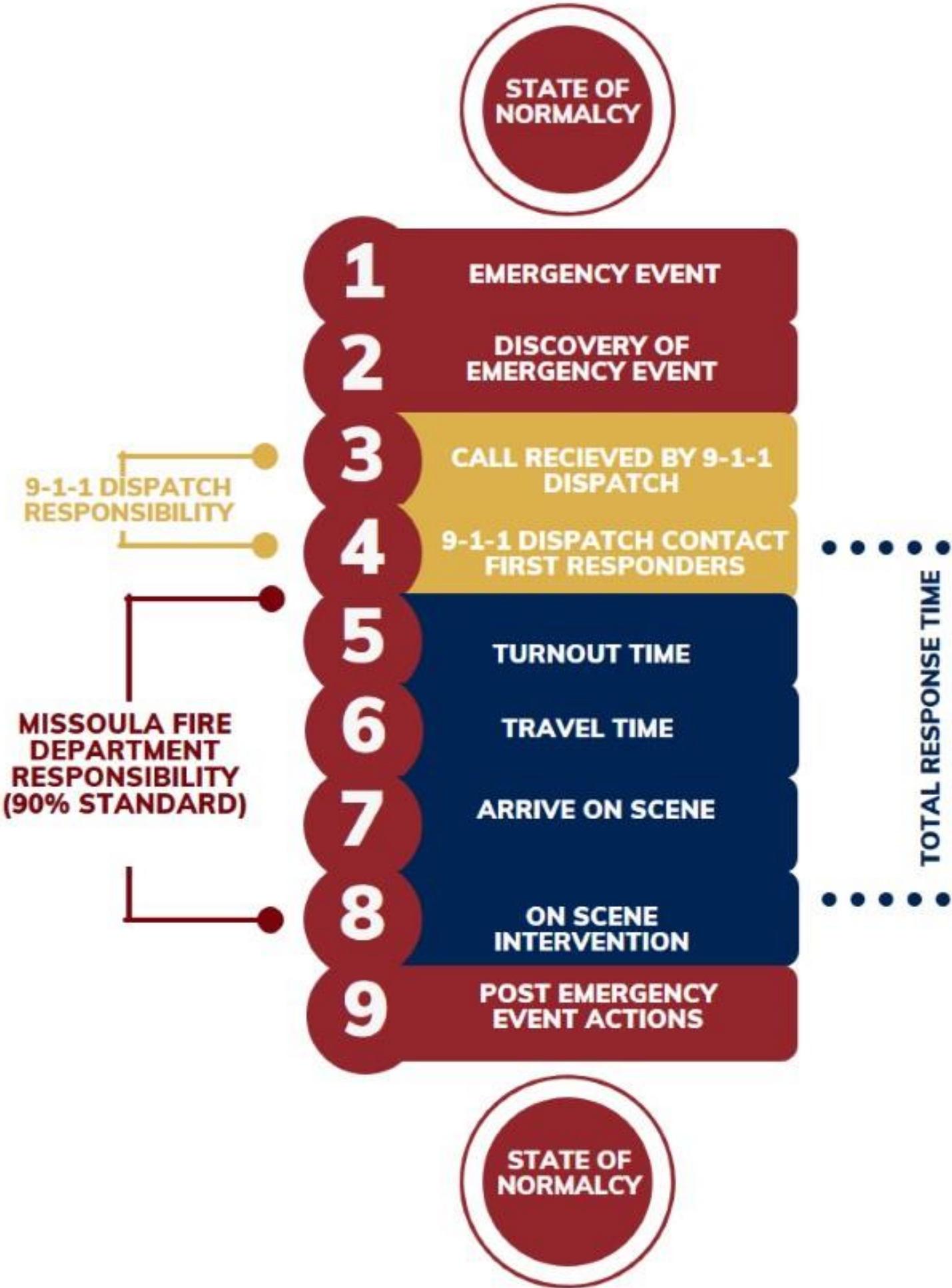
CALL VOLUME VS. STAFFING



RESPONSE TIME

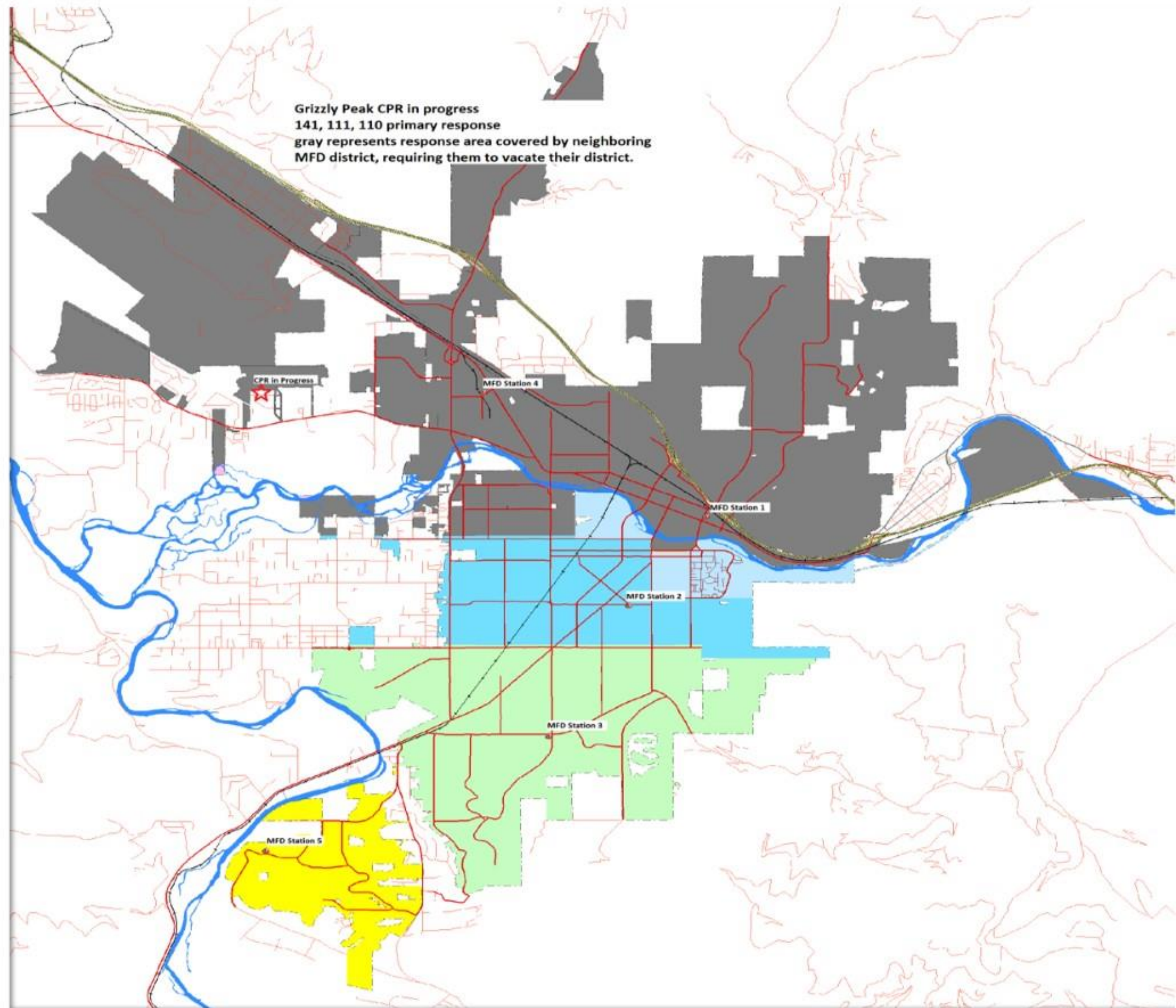
The NFPA 1710 A.3 Standard measures the moment a call is received by a dispatcher to the time responders arrive on-scene. To meet standard, a department must meet the goal time 90% of the time.

NFPA 1710 Response Time Standards		
Benchmarks	Response Objectives (NFPA 1710)	MFD Times 2022
Turnout Time - Fire	80 seconds (1:20 minute/seconds)	1:23
Turnout Time - EMS	60 seconds (1:00 minute)	1:13
First Due Engine	240 seconds (4:00 minutes) 90% of the time	6:16
Second Due Engine	360 seconds (6:00 minutes) 90% of the time	10:19
Initial Full Alarm (Low/Medium Hazard)	480 seconds (8:00 minutes) 90% of the time	9:12



Simultaneous Response

CPR in progress Grizzly Peak
141,111,110 primary response
Gray represents response area covered by neighboring MFD, requiring them to vacate their district.

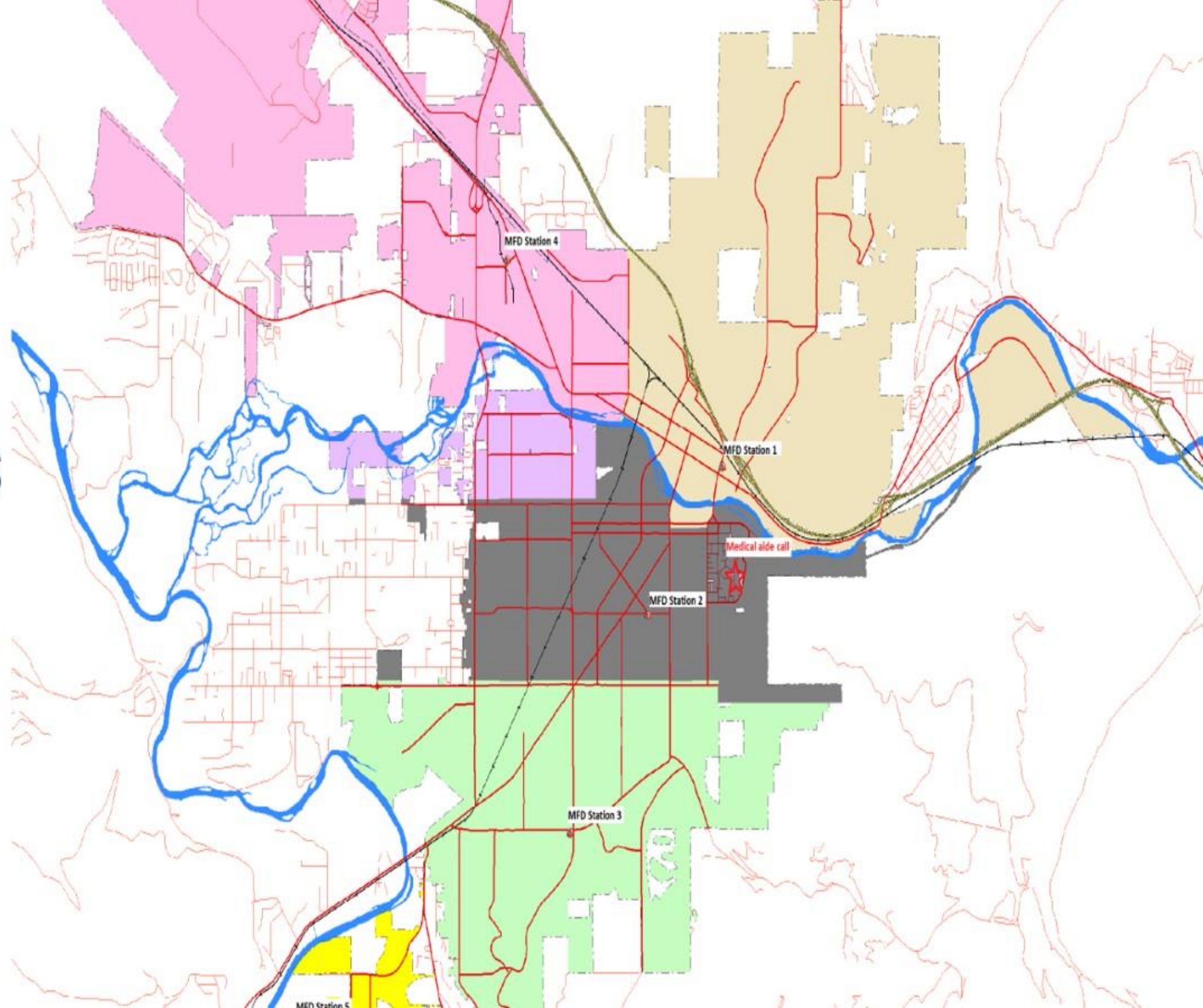


Simultaneous Response

Medical aide call University of Montana

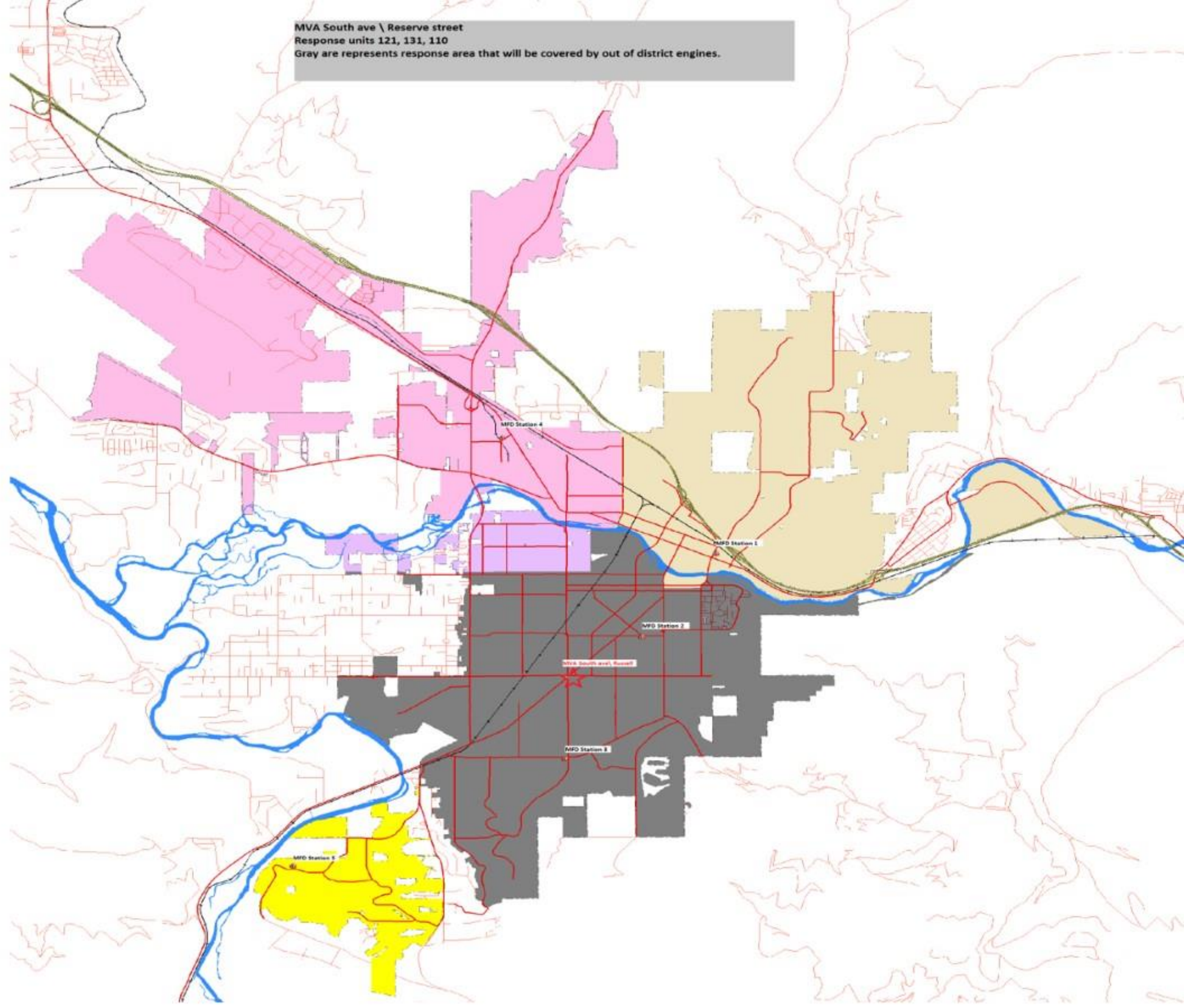
121 primary response

Gray represents response area covered by neighboring MFD, requiring them to vacate their district.



Simultaneous Response

MVA South ave/Russell st
131,121,110 primary response
Gray represents response area covered by neighboring MFD, requiring them to vacate their district.



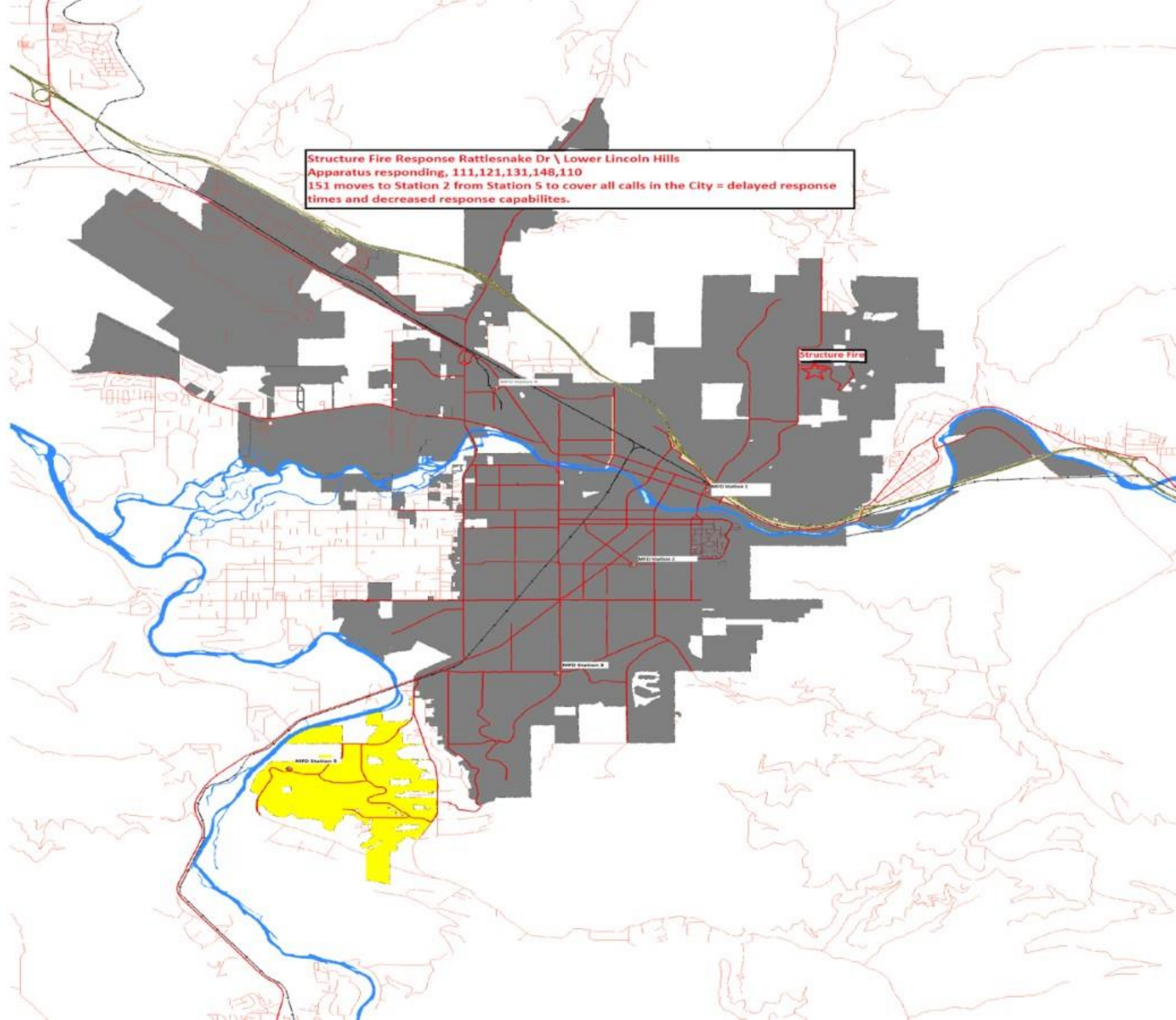
Simultaneous Response

Structure Fire Response

Rattlesnake Dr. \ Lower Lincoln Hills

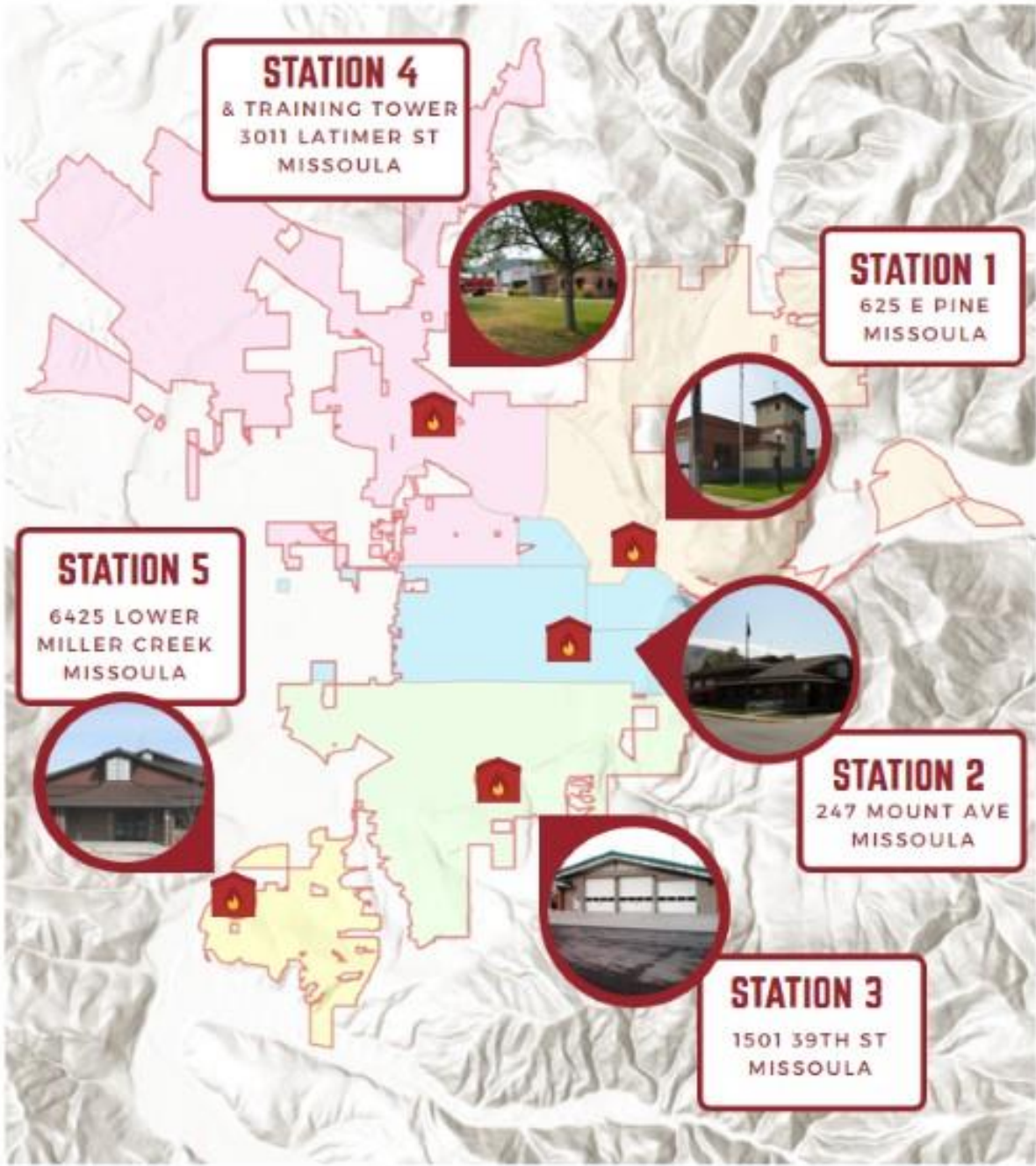
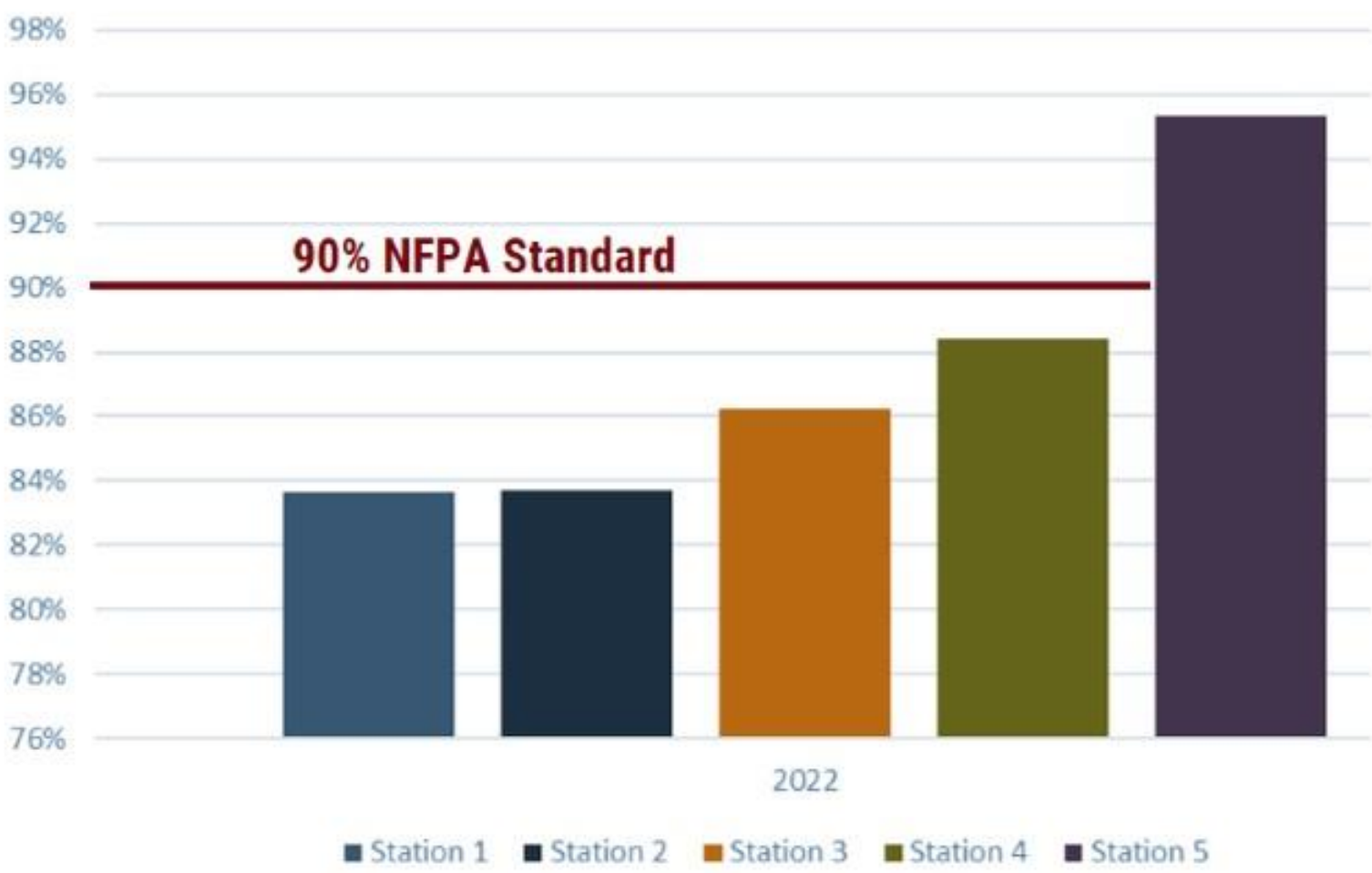
111,148,121,131,110 primary response

Gray represents response area covered by neighboring MFD, requiring them to vacate their district.



STATION RELIABILITY

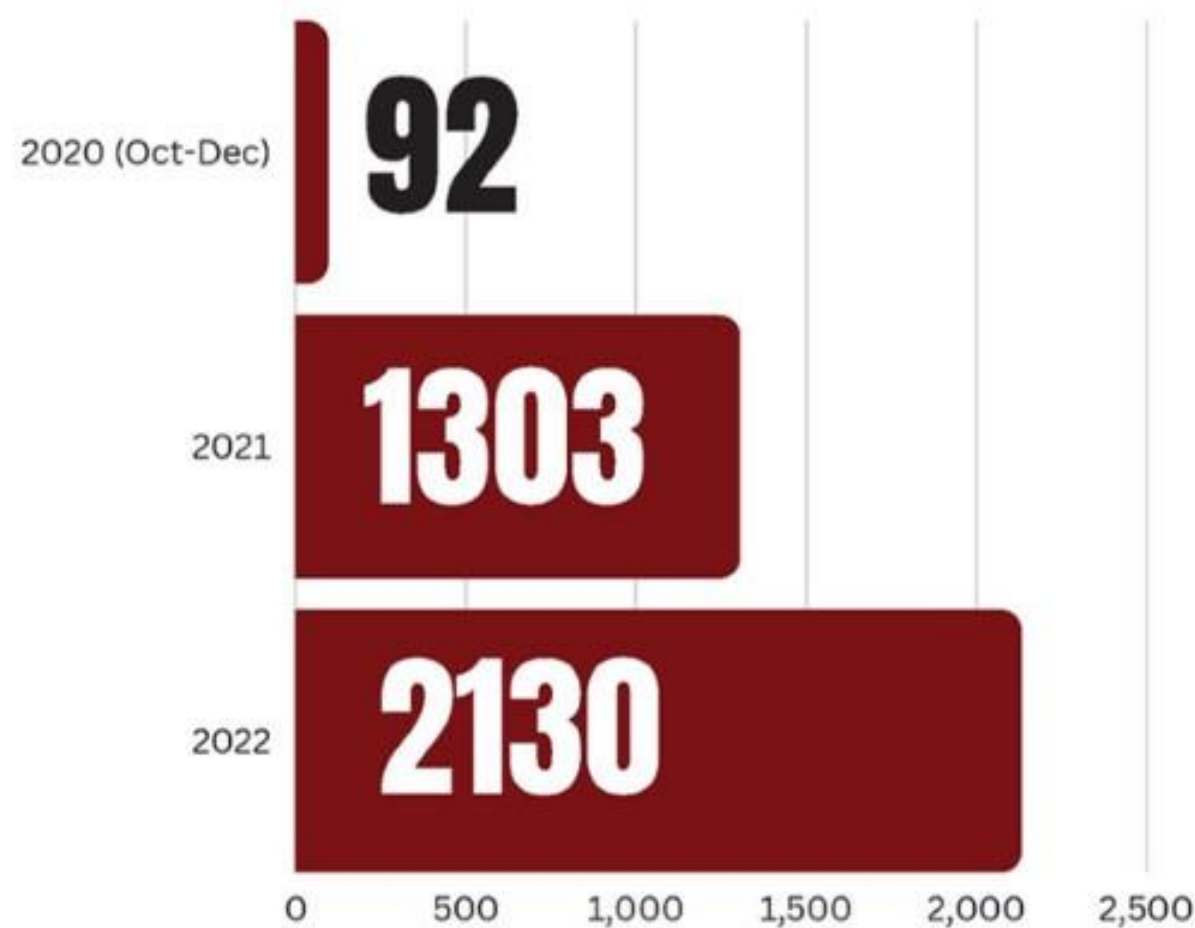
Station reliability is paramount when responding to calls within designated jurisdictions and districts. When a station crew is unable to respond to an incident within their district, their reliability drops. A station crew may be out of district for a variety of reasons: providing response to other districts, major incidents, required personnel training, responding to other jurisdictions for mutual aid requests and more. Currently, Station 5 is the only station meeting the 90% NFPA standard for reliability. Missoula’s rapid growth, especially to the west, necessitates the need for a 6th fire company and station.



2021 CONCURRENT INCIDENTS		
CONCURRENT INCIDENTS	TOTAL INCIDENTS	PERCENTAGE OF TOTAL CALLS
Single Incident	4999	49%
2	3697	36.16%
3	1171	11.45%
4	284	2.78%
5 or more	73	0.71%

MOBILE SUPPORT TEAM

Established in 2020, the Mobile Support Team (MST) call volume has increased substantially. This is due in part to its purpose in our community along with community growth.



Personnel

In coordination with Partnership Health Center, the MST includes four Crisis Response EMTs, an MST Program Coordinator, four clinicians, four administrative staff members, and an administrative support staff member.



Population Served

All individuals experiencing mental health crisis or emergency. This includes a diverse population of individuals with various socioeconomic status, race, ethnicity, language, disabilities, and gender.



Outcomes

The goal of this program is to provide the right care in the right setting for people experiencing behavioral/mental health emergencies. The program reduces the time and resources of Missoula first responders to divert the number of arrests and emergency room visits.



Funding

The MST was implemented with one time federal grant dollars that are no longer available, despite the community's continued need.

THE PROBLEM



Delayed Response Time

Response times are slower; crews are unable to get to an incident in a timely fashion (or at all) due to higher call volume. Currently we are 2:24 over the NFPA standard.



Limited Resources

No additional personnel available to respond due to limited staffing ratios.

NFPA 1710 Community risk assessment begins with identification of the hazards present in the community. Given that a particular hazard exists in a community, the consequences of an emergency event (e.g., fire) in such a hazard are ultimately determined by the mitigation efforts. In other words, the consequences are the results of the combination of the risk level of the hazard, the duration and nature of the event, property loss (e.g., building damage or collapse), personal injury or loss of life, economic losses, interruption of business and related operations, and damage to the environment.

THE CONSEQUENCES

Without adequate staffing, at minimum, the consequences to our community are significant. NFPA outlines these consequences in the following four categories:



Human Impacts

- Civilian injuries/deaths
- Firefighter injuries/deaths



Economic impacts

- Property loss - both direct and indirect efforts
- Decreased ISO ratings



Psychological impacts

- Loss of public confidence in first response



Functional impacts

- Lack of continuity of operations
- Loss of effectiveness

CURRENT FUNDING LIMITATIONS



Federal Funding Limitations

Federal funding is subject to availability and can be unpredictable.



Tax Limitations

Limited tax revenue due to restrictions set forth by state statutes.



Grant Funding Limitations

Grant sources are limited to one time funding.



A SUSTAINABLE SOLUTION

The Missoula Fire Department is seeking support from the community and City Council in an effort to generate a sustainable funding source specific to its operations. With this support, MFD will be best equipped to meet the needs of our growing community.



PERSONNEL

The majority of overall funding will be used to recruit, hire, and train an engine company along with retaining the existing workforce through competitive wages.



CAPITAL OUTLAY

Additional funding will be allocated to necessary personal protective equipment, apparatus, facilities, and other necessary resources for the engine company.



MOBILE SUPPORT TEAM

A portion of funding will be allocated to fund the Mobile Support Team as part of MFD's overall budget.



THE INVESTMENT

If the levy passes, it will appear on tax bills in 2024. At current mill rates, the 34 mills would cost approximately \$46 per year per \$100,000 of assessed value for a house. Note that market value and assessed value are not the same. In 2023, the Department of Revenue shows that the median assessed home value in Missoula County is \$413,200. The Missoula Organization of Realtors shows a median home price of \$539,500 in Missoula County for 2023. You can look up your home's assessed value on the Department of Revenue website. A home at the median assessed value in Missoula would pay approximately \$189.66 per year, or \$15.80 per month.



WHERE TO LEARN ABOUT THE MISSOULA FIRE DEPARTMENT

Each of our divisions are unique and important to the overall efficacy of the department. Learn more about what each department does



Call Us

Our personnel are happy to share more about the work we do.



Social Media

We use social media to share the work our firefighters are doing, share more about life and fire safety, and inform the community of emergencies when applicable.



Website

Visit our website to learn MFD's history, more about our department and personnel, and learn more life and fire safety information.