

Rattlesnake Reservoir Recreation Plan - Duncan Drive Trail & Trailhead

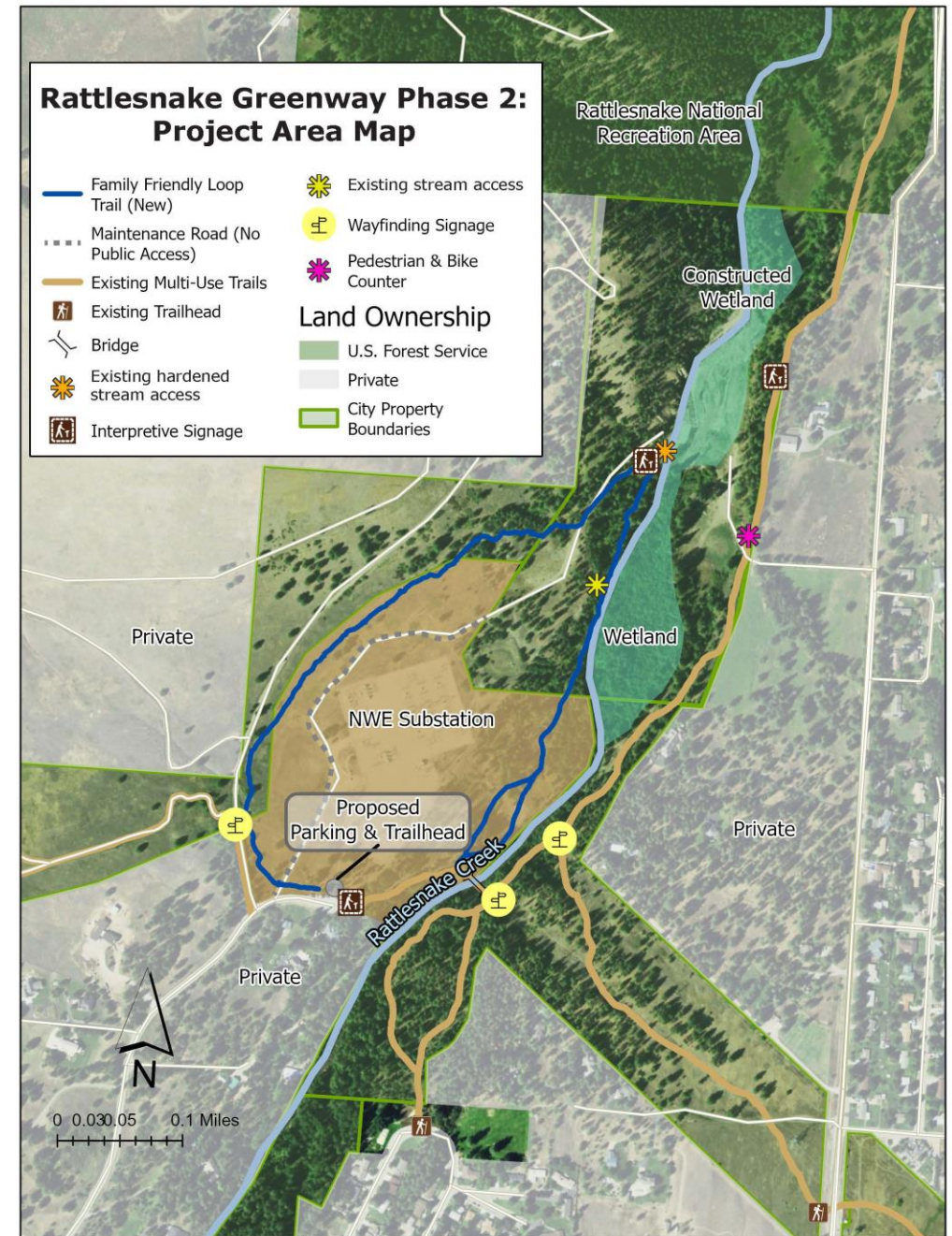
Climate, Conservation, and Parks

August 14, 2024

Jeff Gicklhorn; Conservation Lands Program Manager

Project Overview

- ▶ **Project Scope: Constructing the Rattlesnake Greenway's Duncan Drive Trail and Trailhead**
 - ▶ The Rattlesnake Reservoir was designated as a Park Preserve in 2018, managed by the Conservation Lands Program
 - ▶ Directly adjacent to existing USFS and City trails, northern terminus of the City's Rattlesnake Greenway
 - ▶ Current trail portal utilizes the Duncan Drive ROW for trail connections and on-street parking
- ▶ **Goals:**
 - ▶ Expand recreational opportunities and protect ecologically-sensitive riparian areas at the Rattlesnake Reservoir Park Preserve
 - ▶ Improve trail connections, site access and parking
 - ▶ Implement the Rattlesnake Reservoir Recreation Management Plan (2019)



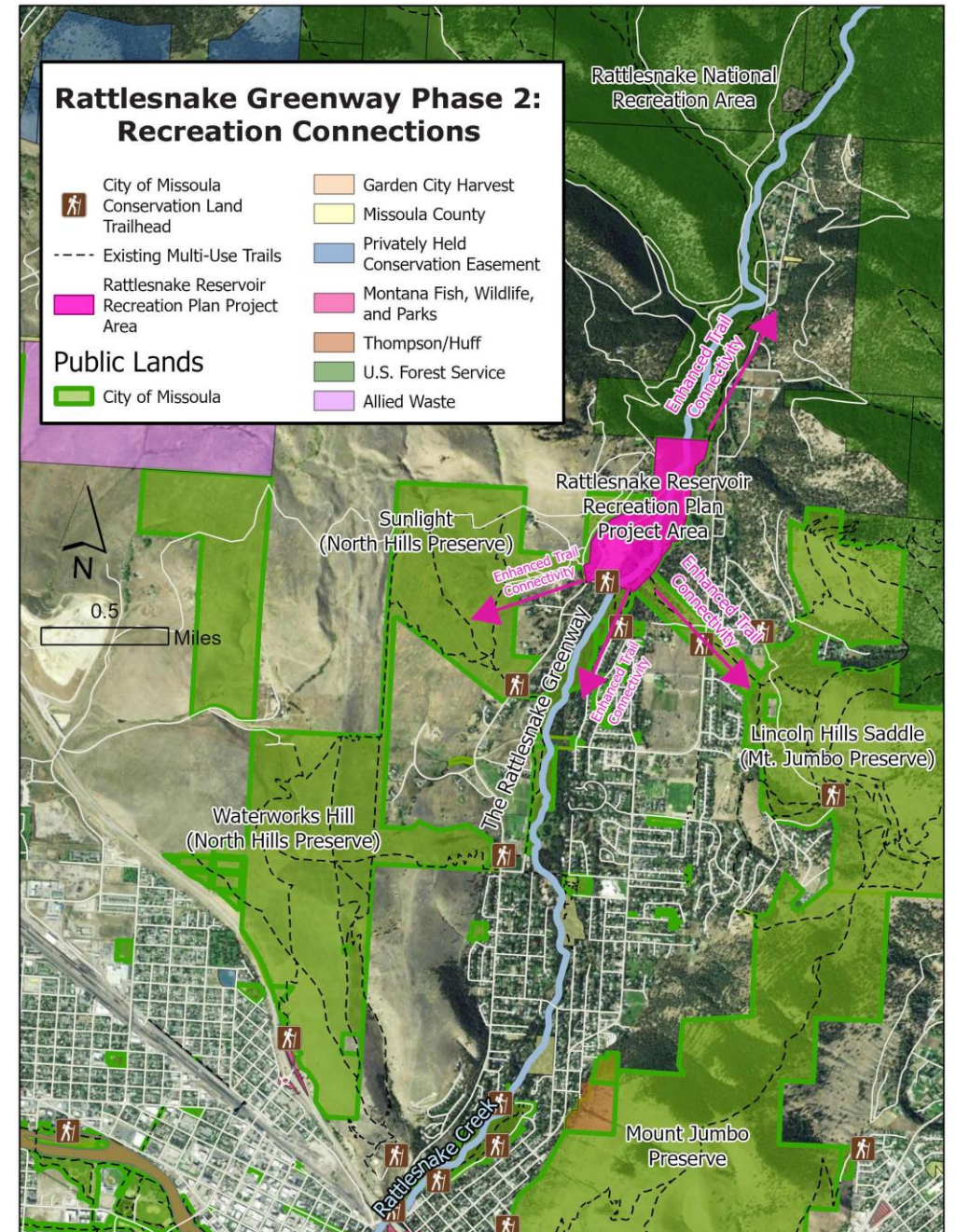
Project Implementation

Funding:

- ▶ \$100,000 award from the MT Fish, Wildlife, and Parks Recreational Trails Program
- ▶ 4:1 match (\$25,000 City funds, fulfilled by CLM Program staff time)

Site Improvements:

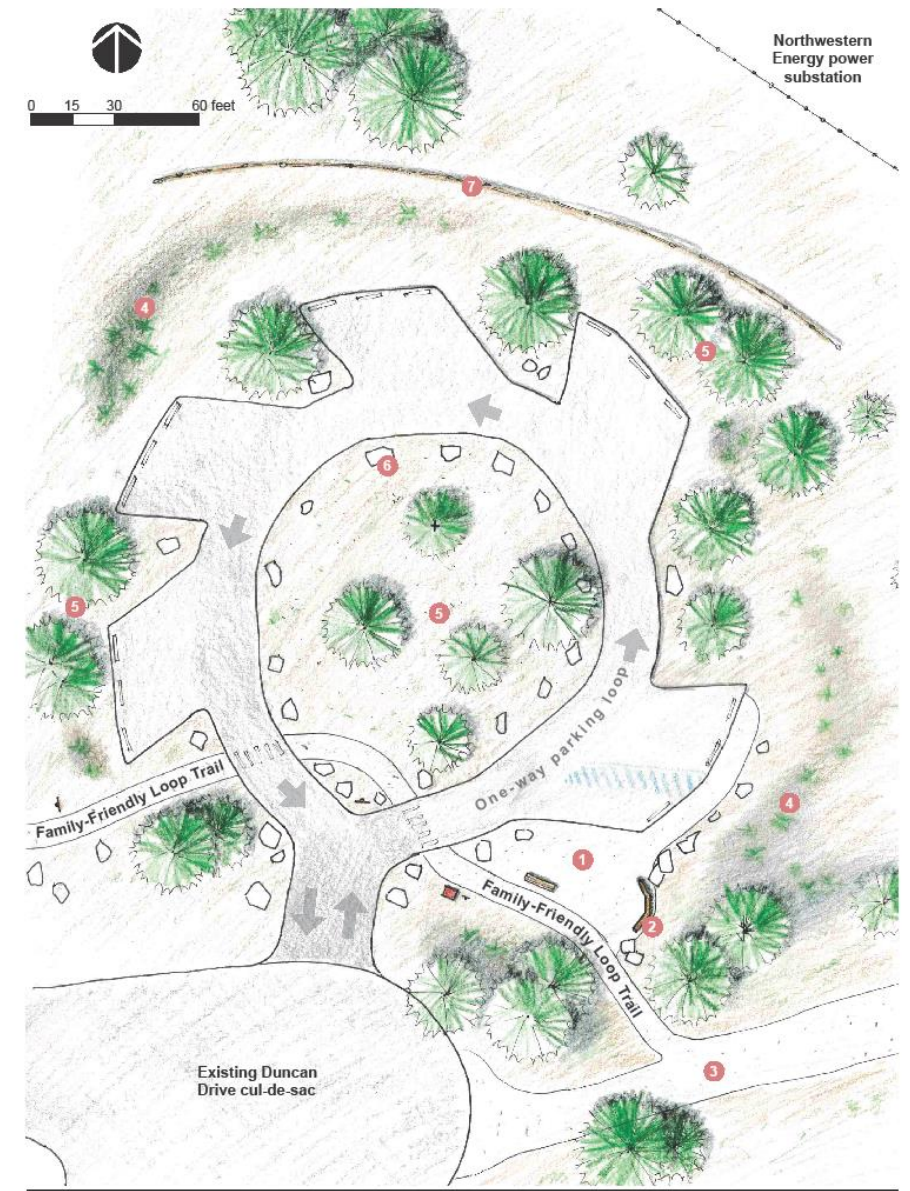
- ▶ Recreation
 - ▶ Re-designed trailhead with room for 10-15 vehicles
 - ▶ New, ~1-mile loop trail with formalized access to Rattlesnake Creek
 - ▶ Interpretive sign package
- ▶ Restoration
 - ▶ Riparian habitat restoration and invasives species management



Project Timeline

Improving recreational user experiences while protecting riparian habitat

- ▶ August 2024 Accept RTP grant agreement
- ▶ Fall 2024 Trailhead design process
- ▶ Winter 2024 Project bidding for construction
- ▶ Spring 2025 Award construction bid
- ▶ Summer 2025 Trailhead construction
- ▶ Summer 2025 Complete new trail construction (CLM staff)
- ▶ Fall 2025 New trailhead and trails open to public
- ▶ Fall 2026 Continued site restoration, end grant term



Duncan Drive Trailhead Concept Plan

- 1 Entry plaza with seating, bear-safe trash can, & waste station; Located adjacent to accessible parking
- 2 Informational kiosk
- 3 Existing trail with improvements for accessibility & wayfinding
- 4 Shallow, planted depressions for low-impact stormwater management
- 5 Preserved area of trees, made possible by minimizing site grading & paved surfaces
- 6 Boulders to help demarcate asphalt driving surface
- 7 Wood fence to discourage foot traffic toward power substation

QUESTIONS?

