



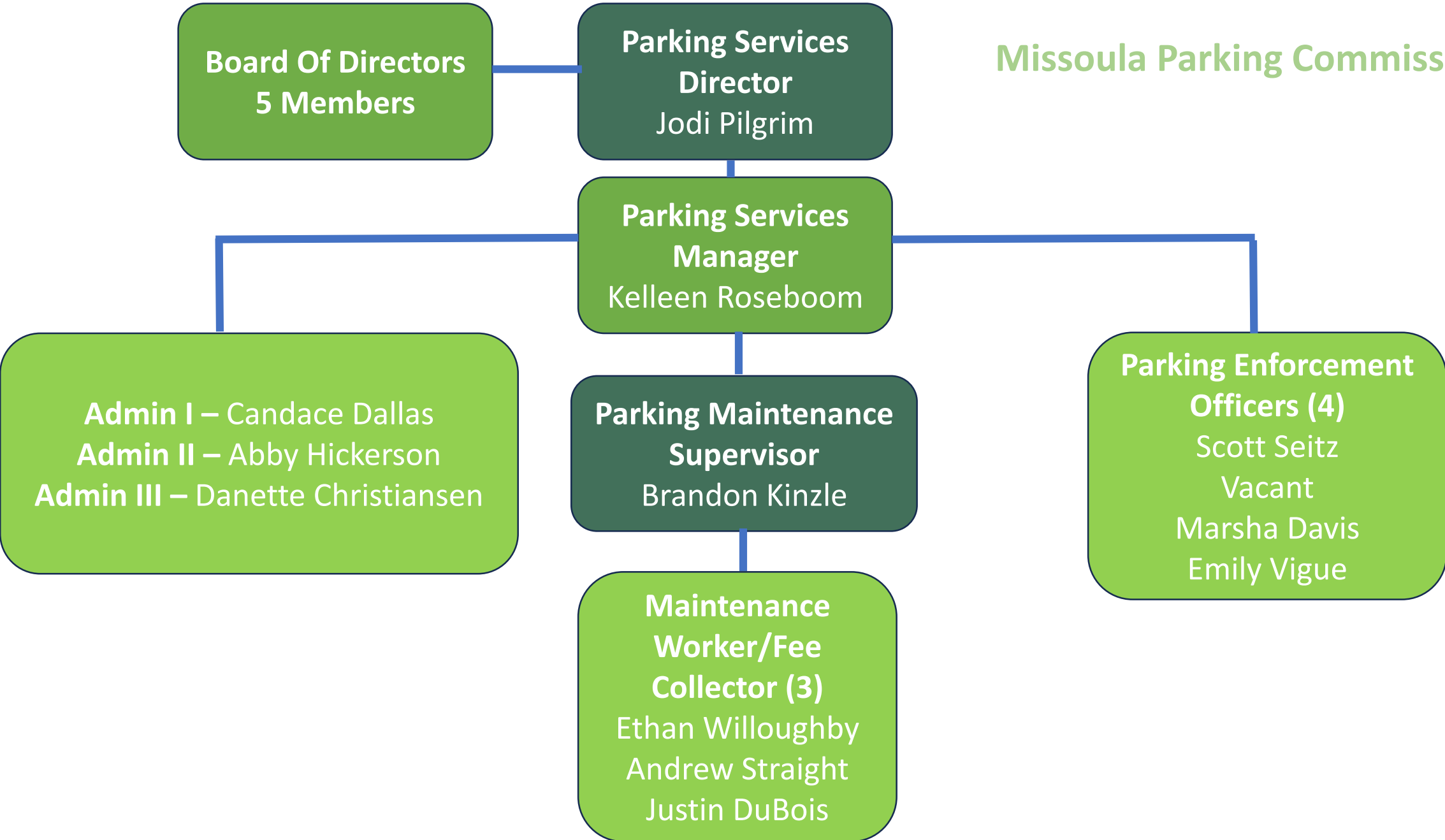
Missoula Parking Commission

Fiscal Year 25 Budget and Strategic Plan Update

Jodi Pilgrim, Parking Services Director

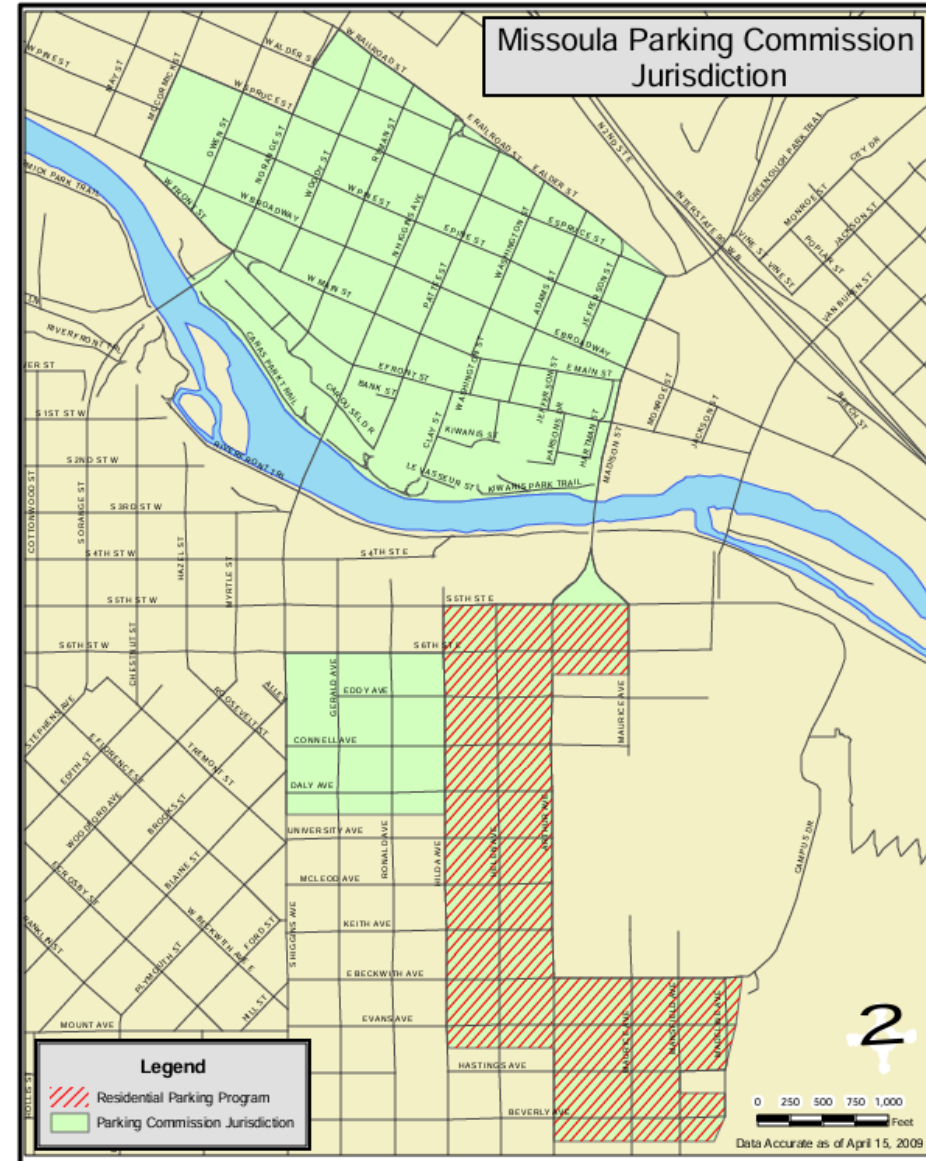
April 22, 2025

Missoula Parking Commission



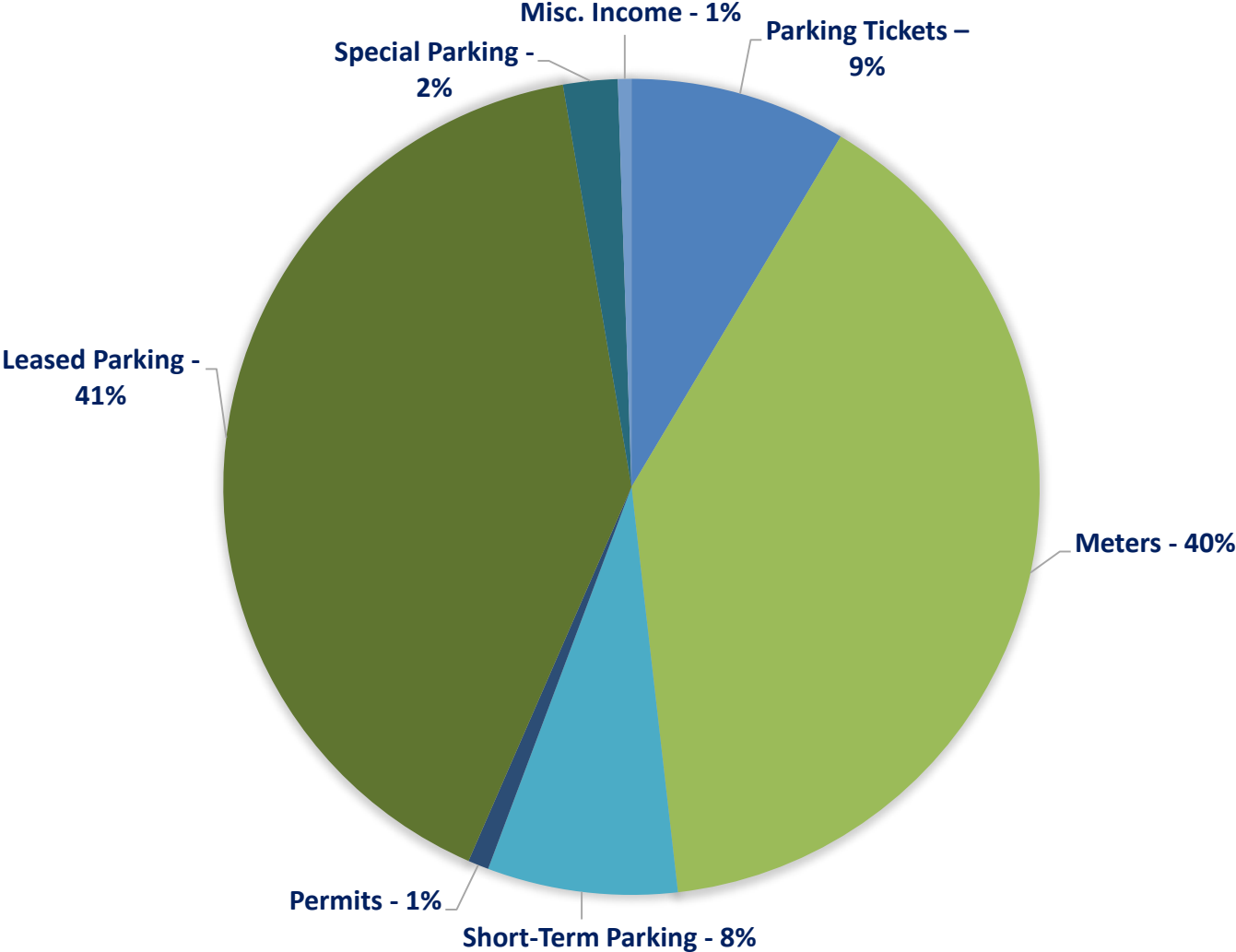
Mission:

To work with government, businesses, and citizens to provide and manage parking and parking alternatives.



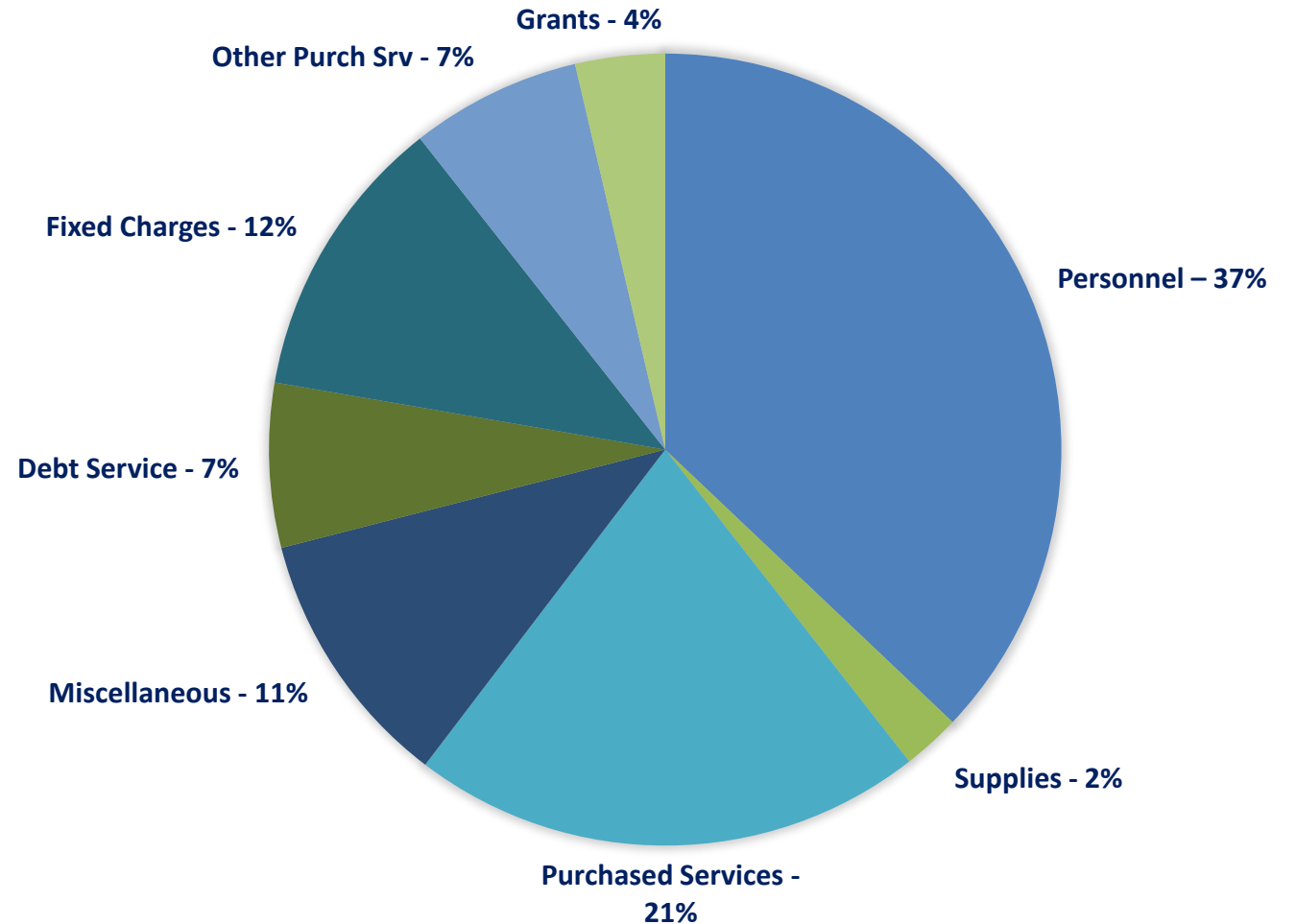
Fiscal Year 2025 Budget Revenue

Revenue	FY25
Parking Tickets	\$263,800
Meters	\$1,219,600
Short-term Parking	\$231,900
Permits	\$25,300
Leased Parking	\$1,255,200
Special Parking	\$66,400
Misc. Income	\$16,454
TOTAL	\$3,078,654



Fiscal Year 2025 Budget Expenses

Revenue	FY25
Personnel	\$1,071,924
Supplies	\$68,135
Purchased Services	\$604,693
Miscellaneous (Bond Payment)	\$307,883
Debt Service (Bond/Bank Interest)	\$194,021
Fixed Charges	\$337,293
Other Purchased Services (City Contract)	\$201,257
Grants and Contributions	\$105,700
TOTAL	\$2,890,906



Fiscal Year 2025 CIP Requests

- **Bank Street Repair**

- Existing CIP from FY24 \$1,283,000.00
- Estimated cost of rebuild \$6,015,000.00 based on conditions assessment
- Additional CIP to cover additional estimated cost

- **Estimated Addition - \$4,732,000.00**

- **Electric Scooter**

- Electric Enforcement Scooter with LPR move from existing gas scooter
- Equipment for 4th Enforcement Officer

- **Cost - \$49,899.00**

- **Maintenance 4-wheeler**

- Improve efficiencies for maintenance team in snow removal and landscaping

- **Cost - \$12,550.00**

Total CIP Request for FY25: \$4,794,449.00

Fiscal Year
2025 - Capital
Improvement
Bank Street

\$6 Million - okay
\$9 Million - nope
\$3.9 Million – yes!





Parking Plan Vision Statement

Enact a proactive, flexible parking management program that responds to our growing and evolving community, advances our most important policy goals, remains financially sustainable, and respects Missoula's unique and varied sense of place.

System/Jurisdiction Expansion

Develop and initiate a Proactive Response Program to enable thoughtful, intentional and adaptable expansion of MPC's jurisdiction and deployment of resources.

Neighborhood Parking Management

Modernize approach so that it can serve the needs of a more robust and diverse group of Missoula community members, while recovering costs and eventually supporting even more benefits to the community.

Short-Term Paid Parking

Optimize pricing and technology to improve user experience and prepare for paid parking expansion where intervention is sorely needed.

Parking Violation Fines

Use higher fines as a tool to shift the enforcement focus to habitual violators and build a safer, friendlier environment for everyone.

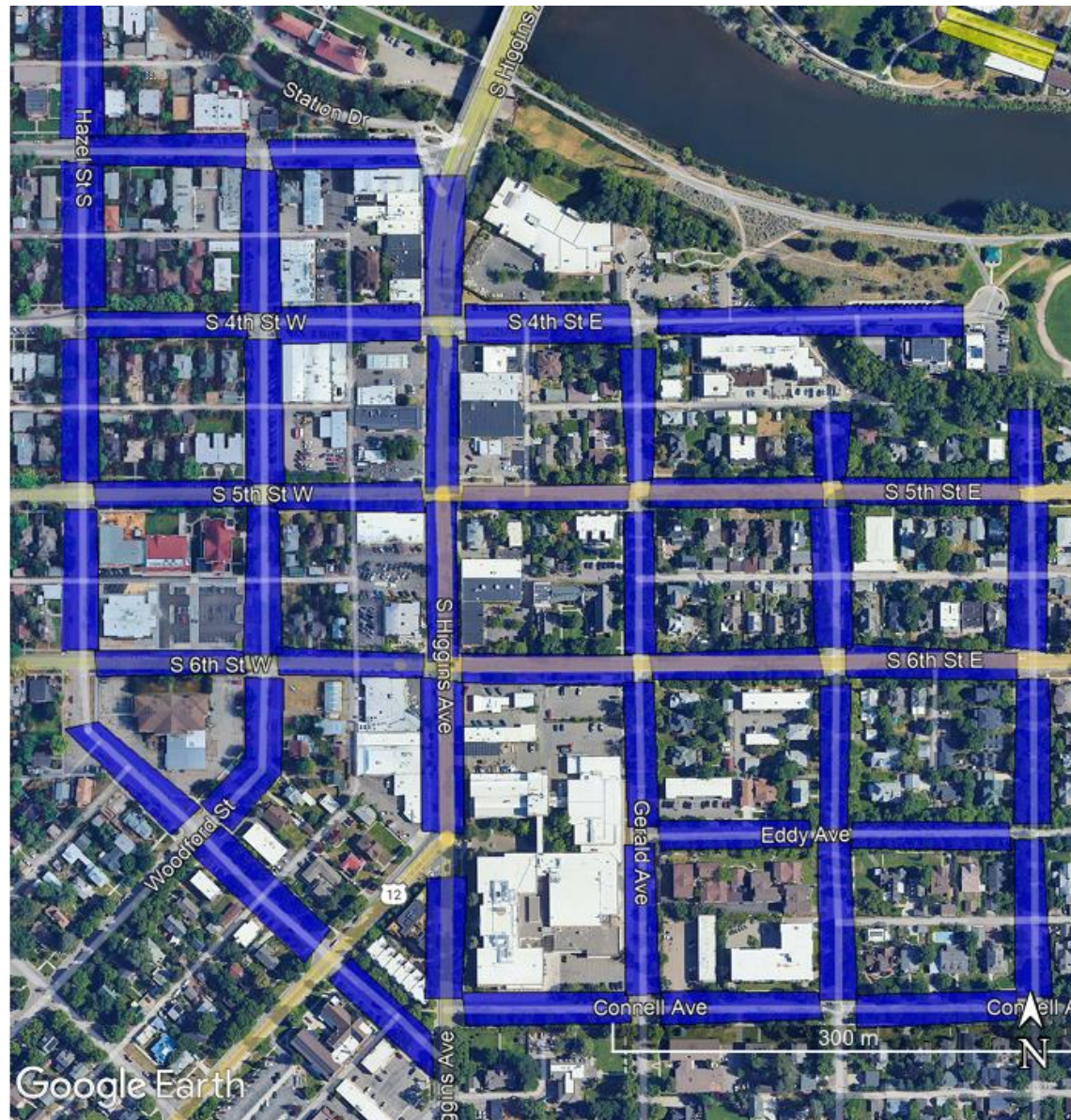
Commercial/Employee Permits

Leverage smart technology and data analysis to improve the permit system's ability to serve more people in different ways.

System/Jurisdiction Expansion

- **Collect KPI data annually** over a 6- to 8-week period in the summer months within existing jurisdiction and in areas with known new developments/parking pressures, covering a weekday peak and weekend peak each week. Data collected should include inventory check, occupancy and length of stay. Other data points that can be collected administratively, like access scores for each area (evaluation of pedestrian/bicycle/transit access) and new development trip generation, should be confirmed quarterly.





Adaptable Expansion

- **Amend City Ordinance** to facilitate expansion of MPC's jurisdiction and establishment of managed parking areas based on established Key Performance Indicators.

10.22.240 Parking commission-- Jurisdictional area. The Missoula Parking Commission, created pursuant to Resolution Nos. 2997 and 2998, shall have jurisdiction to impose and enforce its regulations and exercise its powers as delegated by Title 7, Chapter 14, MCA, and this code ~~within the boundaries outlined in Exhibit A.~~ within the jurisdictional boundaries set by City Council and adopted by City Council Resolution.

Neighborhood Parking Permits



Amend permit pricing

Broaden the permit program

Allow for short-term parking

Parking Violation Fines

Fines

- Increase meter and OT escalations
- Add escalation to all other fine types





Fine Increases

	Number of violations in previous 180 days				
	0	1	2	3	4 or more
Meter Violation	\$0	\$ 510	\$ 1020	\$ 1030	\$ 2040
Overtime Violation	\$0	\$ 510	\$ 1020	\$ 1030	\$ 2040

	Number of violations in previous 365 days				
	0	1	2	3	4 or more
Improper Parking Violations	<u>\$20</u>	<u>\$40</u>	<u>\$60</u>	<u>\$80</u>	<u>\$100</u>



Short-term Paid Parking

Commercial/ Employee Permits





Thank you

- Jodi Pilgrim
(406) 552-6242
pilgrimj@ci.missoula.mt.us