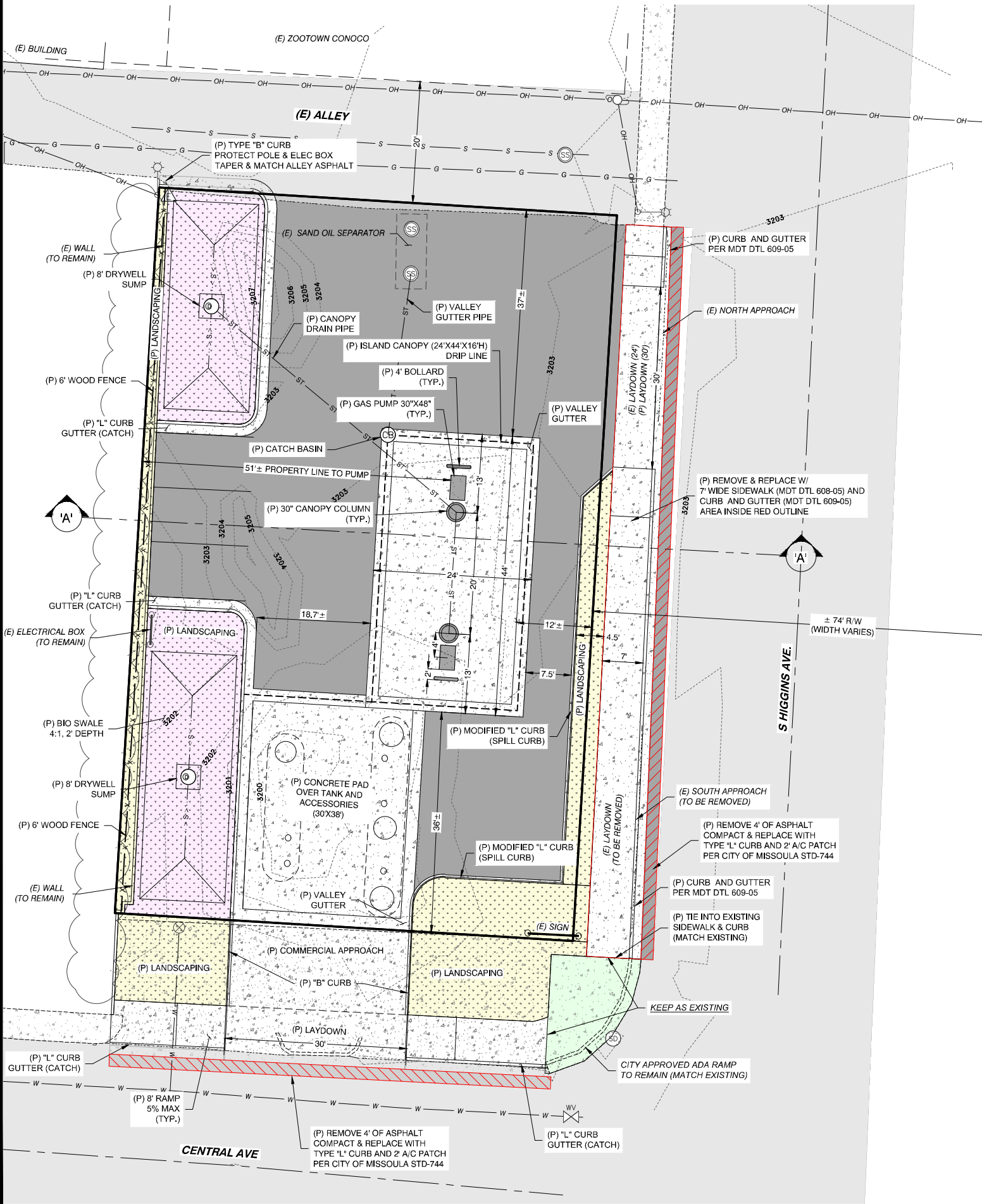


# SITE PLAN OF ZOOTOWN CONOCO GAS ISLAND CANOPY

HOMEVALE ADDITION, PORTION OF BLOCK 2  
LOCATED IN THE SE1/2 OF SECTION 28 T.13N., R.19W., P.M.M.,  
CITY OF MISSOULA, MISSOULA COUNTY, MONTANA



VICINITY MAP



### LEGEND

EXISTING	PROPOSED	ASPHALT
W	WATER MAIN	ASPHALT
S	SEWER MAIN	CONCRETE
G	GAS LINE	LANDSCAPE
OH	OVERHEAD POWER LINE	ST
---	"L" CURB	SWALE
---	TYPE "B" CURB	SS
---	ASPHALT	CB
---	CONCRETE	(E)
WV	GATE VALVE	(P)
CS	CURB STOP	(TYP.)
SS	SANITARY SEWER MANHOLE	R/W
SD	STORM DRAIN MANHOLE	
U	UTILITY POLE	
E	ELECTRIC RISER	
L	LIGHT POLE	
F	FIBERGLASS TANK	
O	SPILL CONTAINMENT DEVICE	

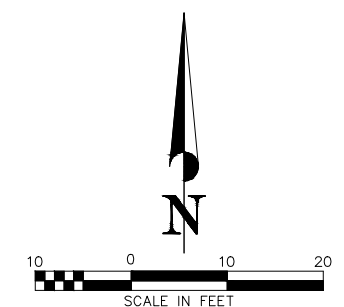
**SITE**  
TOTAL = 9,035 SQ. FT. (0.21 AC.)

**ON SITE**  
LANDSCAPE AREA = 2,085 SQ. FT. (0.05 AC.), 23.1%  
CONCRETE AREA = 2,542 SQ. FT. (0.06 AC.), 28.1%  
ASPHALT AREA = 4,408 SQ. FT. (0.10 AC.), 48.8%  
CURB = 375 LF

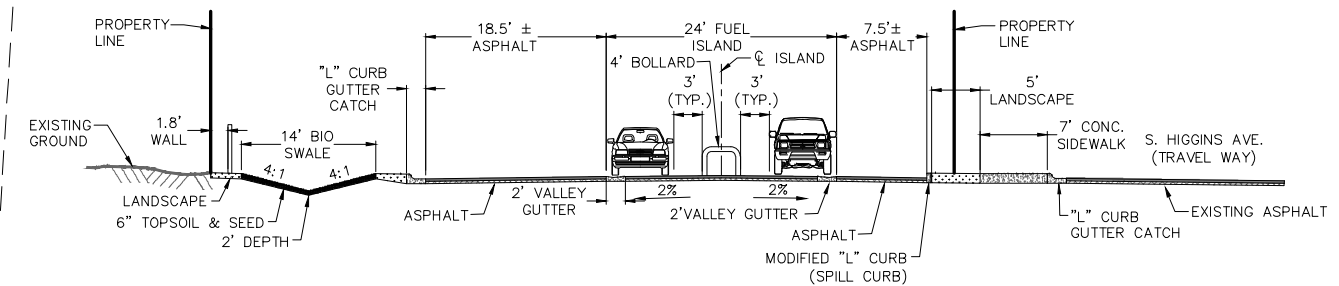
**OFF SITE**  
LANDSCAPE AREA = 751 SQ. FT. (0.02 AC.)  
CONCRETE AREA = 2,060 SQ. FT. (0.05 AC.)  
ASPHALT AREA = 458 SQ. FT. (0.011 AC.)  
CURB = 179 LF

### SHEET INDEX

- C0.0 COVER SHEET
- C1.0 SITE PLAN
- C2.0 GRADING PLAN
- C3.0 LANDSCAPE PLAN
- C4.0 CANOPY STRUCTURAL DETAILS
- C4.1 CANOPY STRUCTURAL DETAILS
- C4.2 CANOPY STRUCTURAL DETAILS
- C5.0 ELECTRICAL DETAILS
- C6.0 CITY DETAILS
- C6.1 CITY DETAILS
- C6.2 PLANTING DETAILS



CALL UTILITY NOTIFICATION  
CENTER OF MONTANA  
**1-800-424-5555**  
CALL FOR THE MARKING OF  
UNDERGROUND UTILITIES  
**2 BUSINESS DAYS BEFORE**  
YOU DIG, GRADE, OR EXCAVATE



SITE CROSS SECTION 'A'  
NOT TO SCALE

PROJECT #: 9465-23

DATE	BY	CHECKED	REVISION
10-01-2025	IE		MKT COMMENTS

TABISH BROTHERS DIST.  
**2125 S. HIGGINS AVE**  
MISSOULA, MT

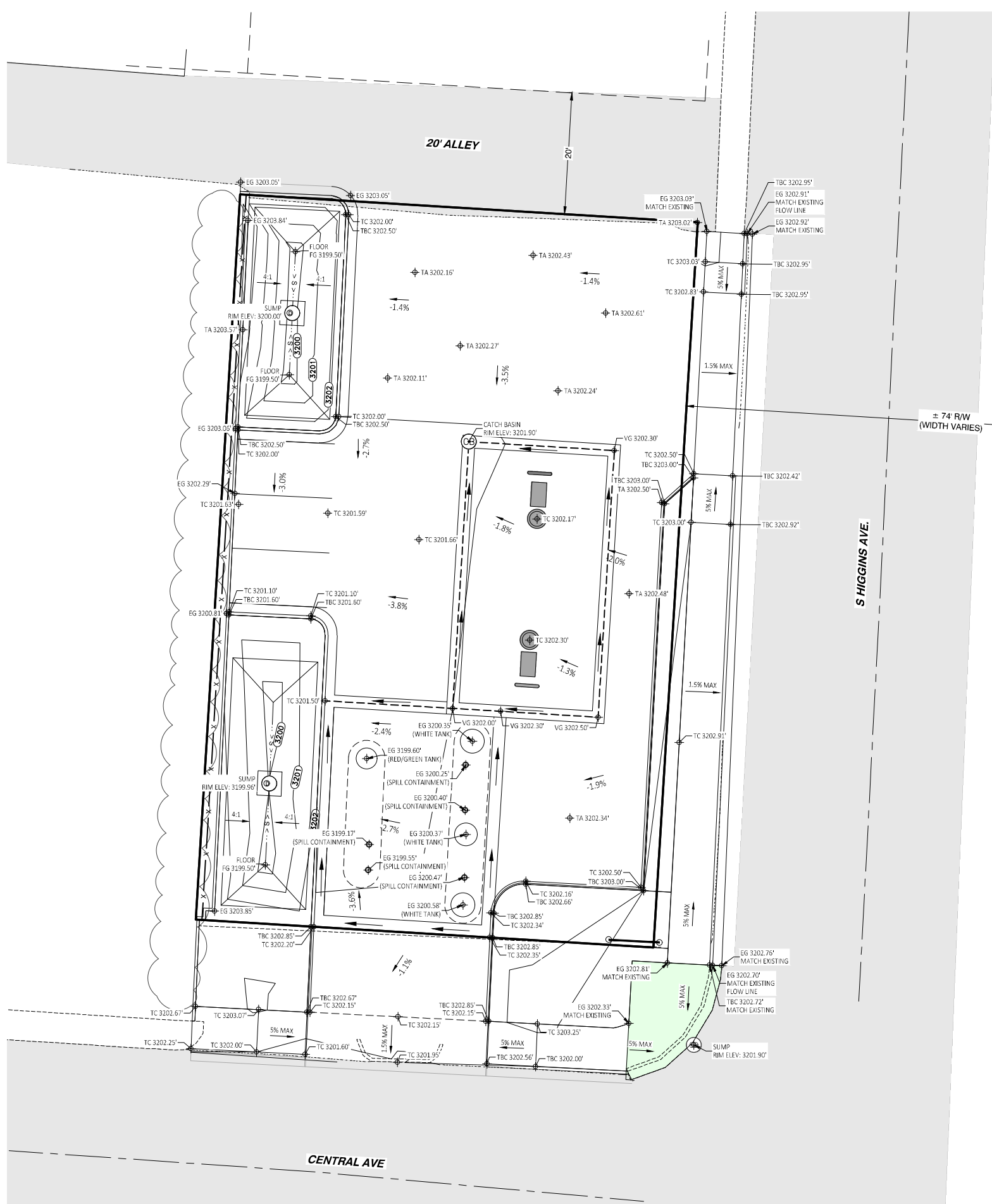
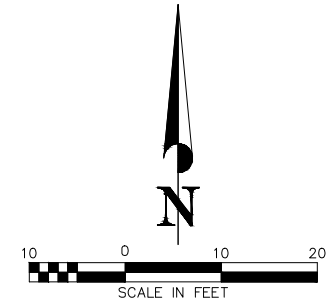
Professional Consultants Inc.  
Engineers, Surveyors, Planners, Mappers  
315 RUSSELL ST., PO BOX 1950  
MISSOULA, MONTANA 59801  
PHONE 406-735-1800  
EMAIL: info@pcinc.com

JULY 23, 2025  
SITE  
PLAN  
**C1.0**

F:\2025\9465-23 Tabish Brothers\Drafting & GIS\9465-23\_ISSUING.dwg 10/29/25

# SITE PLAN OF ZOOTOWN CONOCO GAS ISLAND CANOPY

HOMEVALE ADDITION, PORTION OF BLOCK 2  
LOCATED IN THE SE1/2 OF SECTION 28 T.13N., R.19W., P.M.M.,  
CITY OF MISSOULA, MISSOULA COUNTY, MONTANA



### LEGEND

EXISTING		PROPOSED	
○	FIBERGLASS TANK	— ST —	STORM DRAIN
○	SPILL CONTAINMENT DEVICE	— S —	SWALE
(E)	EXISTING	— 3221 —	CONTOUR LINES
(P)	PROPOSED	⊙	SANITARY SEWER MANHOLE
(TYP.)	TYPICAL	⊙	CATCH BASIN (ROUND)
± 3000.00'	SPOT GRADE	⊙	DRAINAGE SUMP
EG	EXISTING GRADE		
FG	FINISHED GRADE		
TC	TOP OF CONCRETE		
VG	VALLEY GUTTER		
TA	TOP OF ASPHALT		
TBC	TOP BACK CURB		
R/W	RIGHT-OF-WAY		
2.2%	SLOPE DIRECTION		

PROJECT #: 9465-23

DATE	BY	CHECKED	REVISION
10-01-2025			NOT COMMENTS

TABISH BROTHERS DIST.  
2125 S. HIGGINS AVE

MISSOULA, MT  
NOMEVALE, BLOCK 2

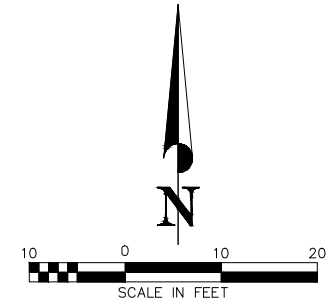
**Professional Consultants Inc.**  
Engineers, Surveyors, Planners, Mappers  
315 RUSSELL ST., PO BOX 1750  
MISSOULA, MONTANA 59801  
PHONE 406-733-8888  
EMAIL: info@pciconsultants.com

JULY 23, 2025  
GRADING  
PLAN  
C2.0

F:\2025\9465-23 Tabish Brothers\Drafting & GIS\9465-23\_BESRNS.dwg 10/29/25

# SITE PLAN OF ZOOTOWN CONOCO GAS ISLAND CANOPY

HOMEVALE ADDITION, PORTION OF BLOCK 2  
LOCATED IN THE SE1/2 OF SECTION 28 T.13N., R.19W., P.M.M.,  
CITY OF MISSOULA, MISSOULA COUNTY, MONTANA



- (11 TOTAL) - INLAND SEA OATS/CHEROKEE SAGE (1-GALLON)
- (4 TOTAL) - RED OSIER DOGWOOD/SNOWBERRY (CLUMPS) (1.5'X8' MIN.)
- (6 TOTAL) - EVERGREEN TREE (6' MIN.)
- (2 TOTAL) - MAPLE TREE (1.5'X8' MIN.)
- (19 TOTAL) - BUNCHGRASSES (1-GALLON)
- (5 TOTAL) - POTENTILLA/SPIREA (5-GALLON) (1.5'X8' MIN.)
- (3 TOTAL) - STELLAR PINK DOGWOOD (1.5'X8' MIN.)
- 3'-6" COBBLES W/WEED BARRIER 6" DEEP
- 4" ORGANIC MULCH A/WEED BARRIER (SOIL PEP) W/ RANDOM PLANTING OF MINT, RULEWOOD, LAVERDER MIX IN.
- 1-1/2" WASHED ROCK, MULCH 4" W/WEED BARRIER FABRIC
- LANDSCAPE
- ASPHALT
- CONCRETE
- SWALE
- DRAINAGE SUMP

- ON SITE**
- 3'-6" COBBLES W/WEED BARRIER 6" DEEP = 123 SQ. FT. (0.003 AC.)
- 4" ORGANIC MULCH A/WEED BARRIER (SOIL PEP) W/ RANDOM PLANTING OF MINT, RULEWOOD, LAVERDER MIX IN. = 1,420 SQ. FT. (0.033 AC.)
- 1-1/2" WASHED ROCK, MULCH 4" W/WEED BARRIER FABRIC CURB = 666 SQ. FT. (0.015 AC.)
- OFF SITE**
- 1-1/2" WASHED ROCK, MULCH 4" W/WEED BARRIER FABRIC = 750 SQ. FT. (0.017 AC.)

**NOTE**  
IRRIGATION AND PLANT MAINTENANCE WILL BE TAKEN CARE OF BY HAND. SCHEDULED WATERING OF THE PLANTS WILL BE TAKEN CARE OF BY HIRED PERSONNEL. MAINTENANCE AND REPLANTING OF DEAD PLANTS WILL BE DONE WHEN NECESSARY AND TAKEN CARE OF BY HIRED PERSONNEL.

**PROJECT #:** 9465-23

DATE	BY	CHECKED	REVISIONS
10-01-2025			MT COMMENTS

**TABISH BROTHERS DIST.**  
**2125 S. HIGGINS AVE**  
MISSOULA, MT  
NOMEVALE, BLOCK 2

**Professional Consultants Inc.**  
Engineers, Surveyors, Planners, Mapmakers  
3175 RUSSELL ST., PO BOX 1750  
MISSOULA, MONTANA 59801  
PHONE 406-735-1800  
EMAIL: P@PROCONSULTANTS.COM

JULY 23, 2025  
**LANDSCAPE  
PLAN  
C3.0**

F:\2025\9465-23 Tabish Brothers\Drafting & GIS\9465-23\_BESIGN.dwg 10/29/25