

— FLAT OF —  
— Mc CORMICK ADDITION N<sup>o</sup> 2 —  
— TO —  
— MISSOULA MONTANA —  
— Scale 1 in = 200 ft —

State of Montana) ss George K. Reider do solemnly swear that I made a careful survey of  
County of Missoula) the McCormick Addition N<sup>o</sup> 2 to Missoula, Montana in accordance with the act of Legislature  
approved March 14<sup>th</sup> 1889, that the annexed plat is in accordance with said survey and that  
the widths of the streets and alleys are as therein designated.  
Subscribed and sworn to before me this 27<sup>th</sup> day of Decr 1889  
C. J. Reider  
Notary Public in and for  
Missoula Co. Montana.

Subscribed and sworn to before me this 27<sup>th</sup> day of Decr 1889  
C. J. Reider  
Notary Public in and for  
Missoula Co. Montana.

State of Montana) ss Mr. J. Marion, a Notary Public and Commissioner  
County of Missoula) in and for the County of Missoula do hereby certify that this map or plat  
of McCormick Addition N<sup>o</sup> 2 to Missoula was by me approved on this the sixth day of  
January A.D. 1890. In witness whereof we have hereunto set our hands and  
the seal of Missoula County this 6<sup>th</sup> day of January A.D. 1890  
J. Marion Chairman of Board  
Commissioners

Commissioners Journal Book R Page 136  
City Res # 1094  
City Res # 1094  
City Res # 1094

in Certificate of Dedication  
S. Frank M. McCormick hereby do hereby certify that I have  
caused to be annexed and platted into lots blocks streets and alleys as shown  
by this plat and certificate of survey the following described tract of land, viz:  
Beginning at the 4<sup>th</sup> cor. on Dr. Prudden Ave. 21<sup>st</sup> N. 13<sup>th</sup> W. 19<sup>th</sup> W. 19<sup>th</sup> W.  
run thence S 89° 56' N. 2646.9 feet to cor. to Decr 16-17, 20<sup>th</sup> + 21<sup>st</sup> N. 13<sup>th</sup> W. thence  
N 14° E 1326.9 ft thence S 89° 56' N. 1335.5 ft thence S 0° 1' W. 910.6 ft thence S 55° 35'  
1652.4 ft thence S 78° 15' E. 609.8 ft thence S 89° 56' N. 2080 ft thence N 0° 02' E. 685 ft  
to base of highway to be known as McCormick Addition N<sup>o</sup> 2 to Missoula and  
all the lands included in all the streets and alleys shown on said plat are  
hereby dedicated and donated to the public use and benefit herein.  
Signed this 31<sup>st</sup> day of December 1889  
Frank M. McCormick  
Notary Public

State of Montana) ss Be it known that on this 21<sup>st</sup> day of December 1889 Frank M.  
County of Missoula) McCormick personally came before me a Notary Public in and for Missoula Co.  
Montana personally known to me to be the same person who signed and  
sealed the foregoing plat and acknowledged the same to be his free act  
and deed and for the purposes therein expressed.  
City Res # 407  
7-20-88  
371-1054  
J. D. B. B. B.  
Notary Public in and for  
Missoula Co. Montana.

Filed for record this 6<sup>th</sup> day of Jan'y 1890  
at 11 o'clock A.M.  
J. D. B. B. B.  
Co. Recorder

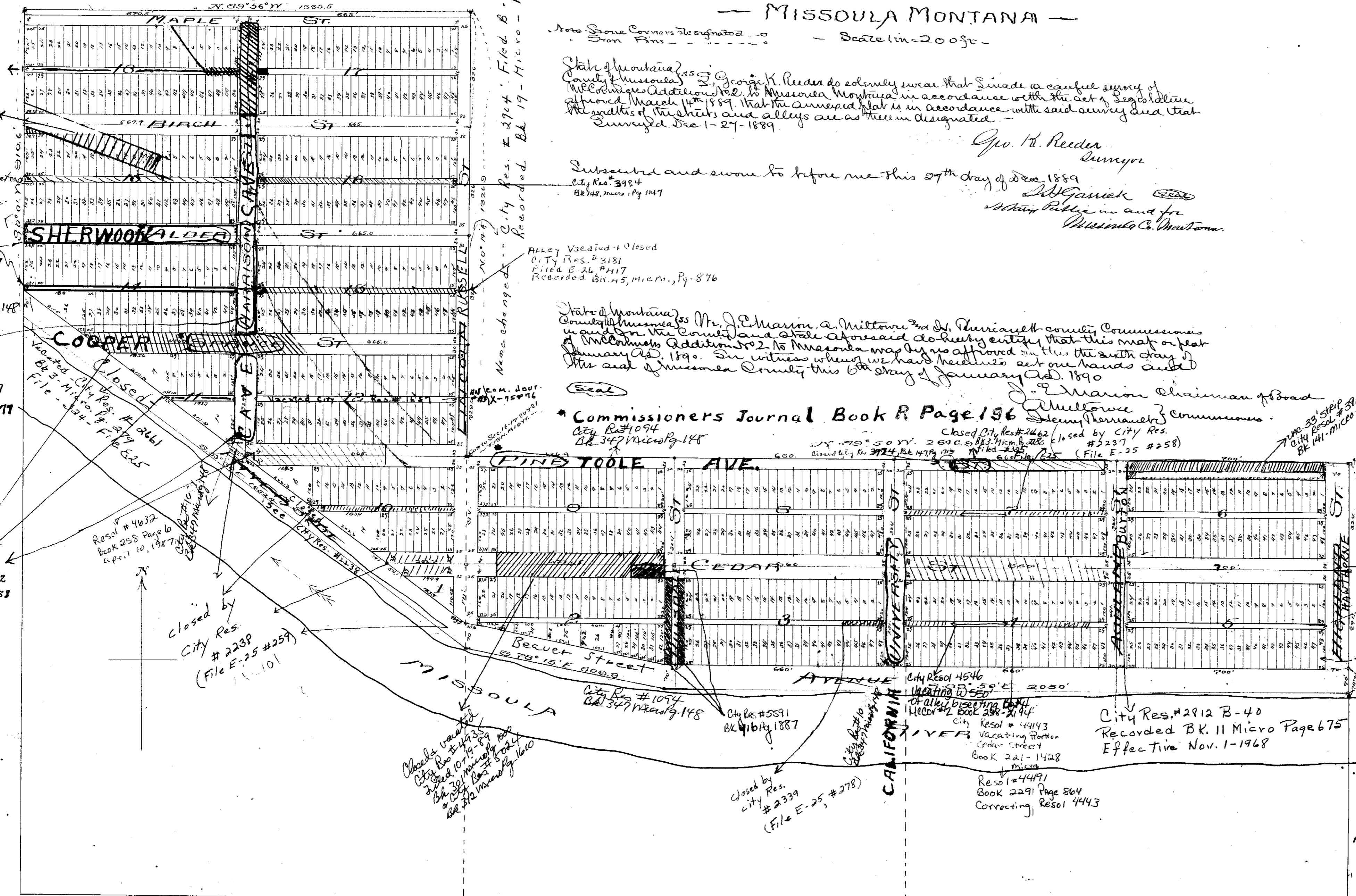
Restrict. Covenants Book 47, Micro Page 1070

STATE OF MONTANA,  
County of Missoula, ss SURVEYOR'S CERTIFICATE

I, J. H. Hale, on my oath deposes and  
says: That I am an engineer under whose supervision the above plat  
was prepared and find this a full, true and correct copy of the original.  
Compared this 29<sup>th</sup> day of January, 1925

ATTEST: J. H. Hale  
City Engineer of Missoula County, Montana

Subscribed and sworn to before me this 26<sup>th</sup> day of Feb. 1925  
Notary Public in and for  
Missoula County, Montana



Vacated  
City Res # 1699  
Comm Jour X  
Page 494  
Rif # 202  
Vacated  
City Res # 4242  
BK 1761, 2276  
City Res # 2441  
BK 3 Micro 122  
# 224 - File E-25  
City Res # 1094  
BK 37 Micro 148  
Vacated Sec  
City Res 1395  
File H-28 # 137  
Vacated Sec  
City Res # 1667  
C.A. Jr X-277  
7-21-53  
Vacated Sec  
City Ordinance # 882  
Book T Misc Pg 158  
E 25 # 239  
Closed by  
City Res  
# 2288  
(File E-25 # 259)  
1-101

Vacated by City Resolution on  
Beas 44, Misc. Page 1575  
File E-26 # 415  
City Ordinance # 882  
Book T Misc Pg 158  
Comm Jour X  
Page 494  
Rif # 202

City Res # 2704  
Filed B-46  
Recorded BK 17 - Micro - Pg. 1257

ALLEY Vacated & Closed  
City Res # 181  
File E-26 # 117  
Recorded Birch, Micro, Pg. 876

City Res # 4546  
City Res # 4546  
City Res # 4546

City Res # 1094  
City Res # 1094  
City Res # 1094

City Res # 2288  
Recorded BK 11 Micro Page 675  
Effective Nov. 1-1968

Resol # 4443  
Book 2291 Page 864  
Correcting Resol 4443