

# **Albertsons 2205 Oxford Street Comprehensive Sign Package Request**

Alex Eidam, Associate Planner  
Development Services  
*November 18th, 2020*

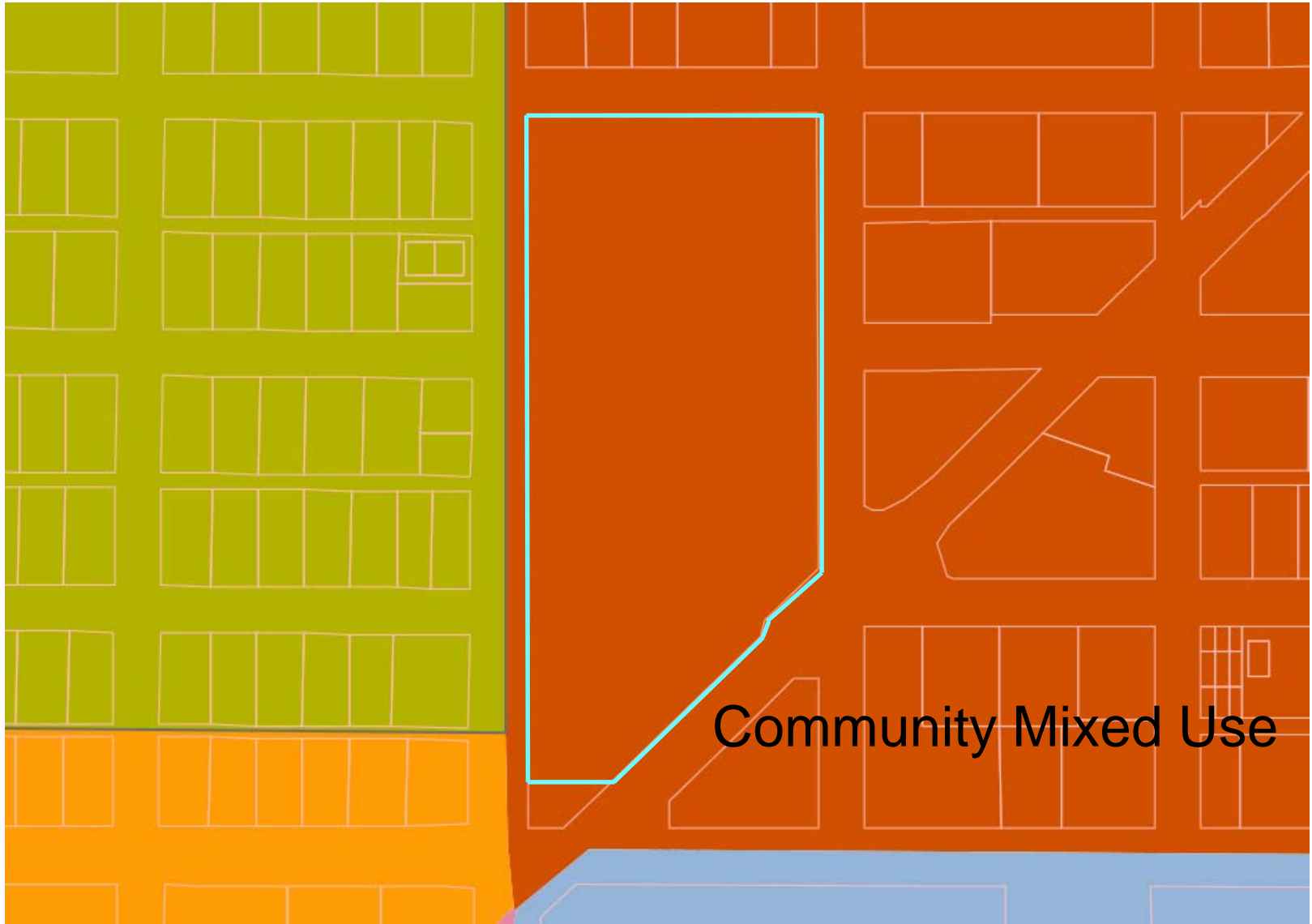




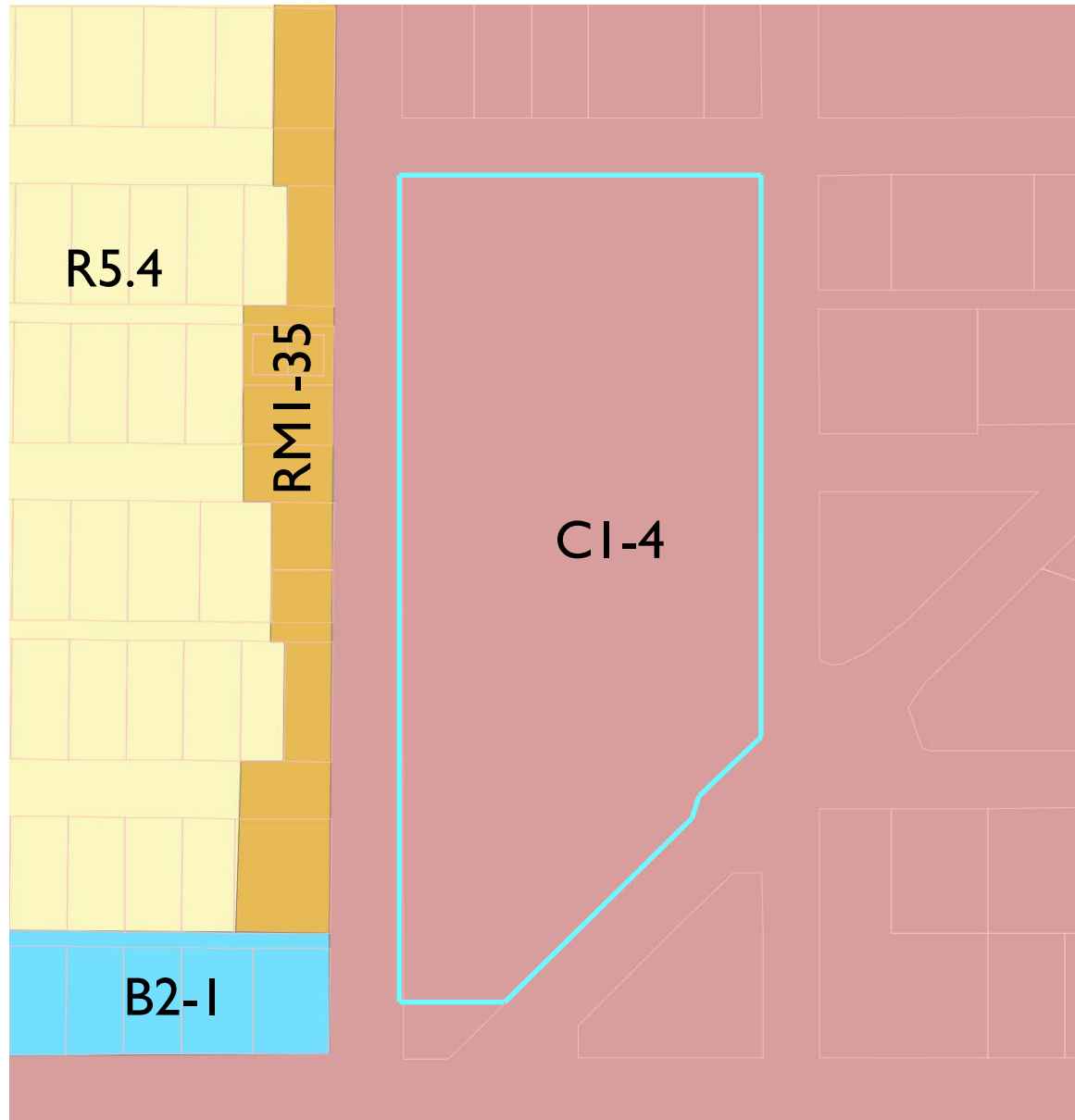
# Property Location



# Our Missoula Growth Policy Map



# Zoning Map



Title 20, Section 20.75.060, Table 20.75-3:

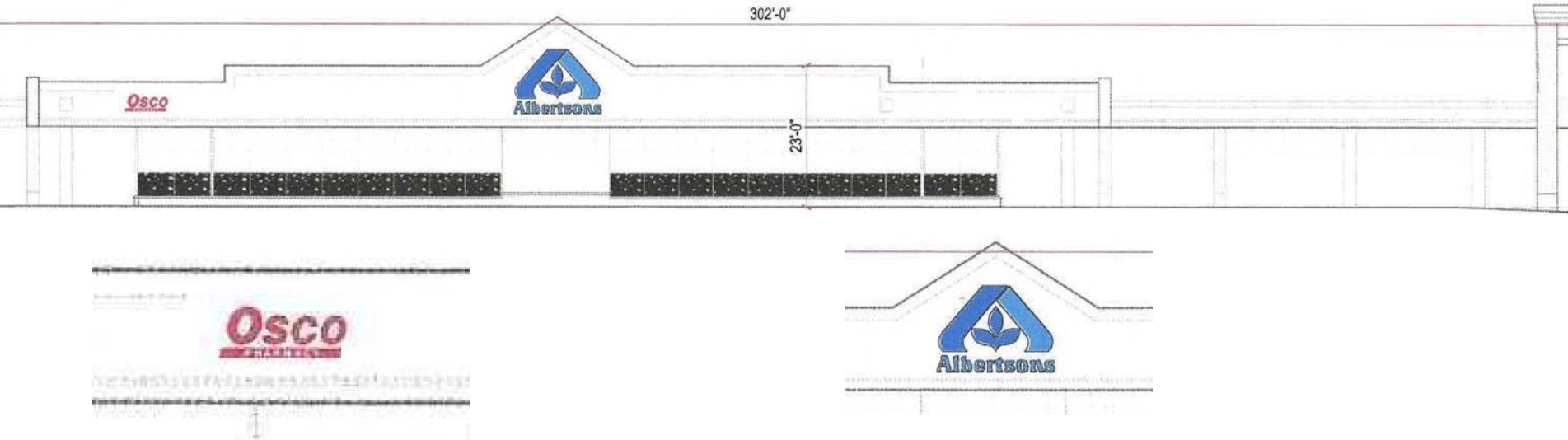
- One (1) Wall sign allowed per building frontage;
- Maximum Size: Fifty (50) square feet plus one (1) square foot for each foot of building frontage in excess of fifty (50) square feet.

Albertson's Building Frontage: 302 lineal feet

Allowable Wall Signage: One (1) wall sign with a maximum square footage of 302 square feet



# Existing Signage



Total: 20 square feet

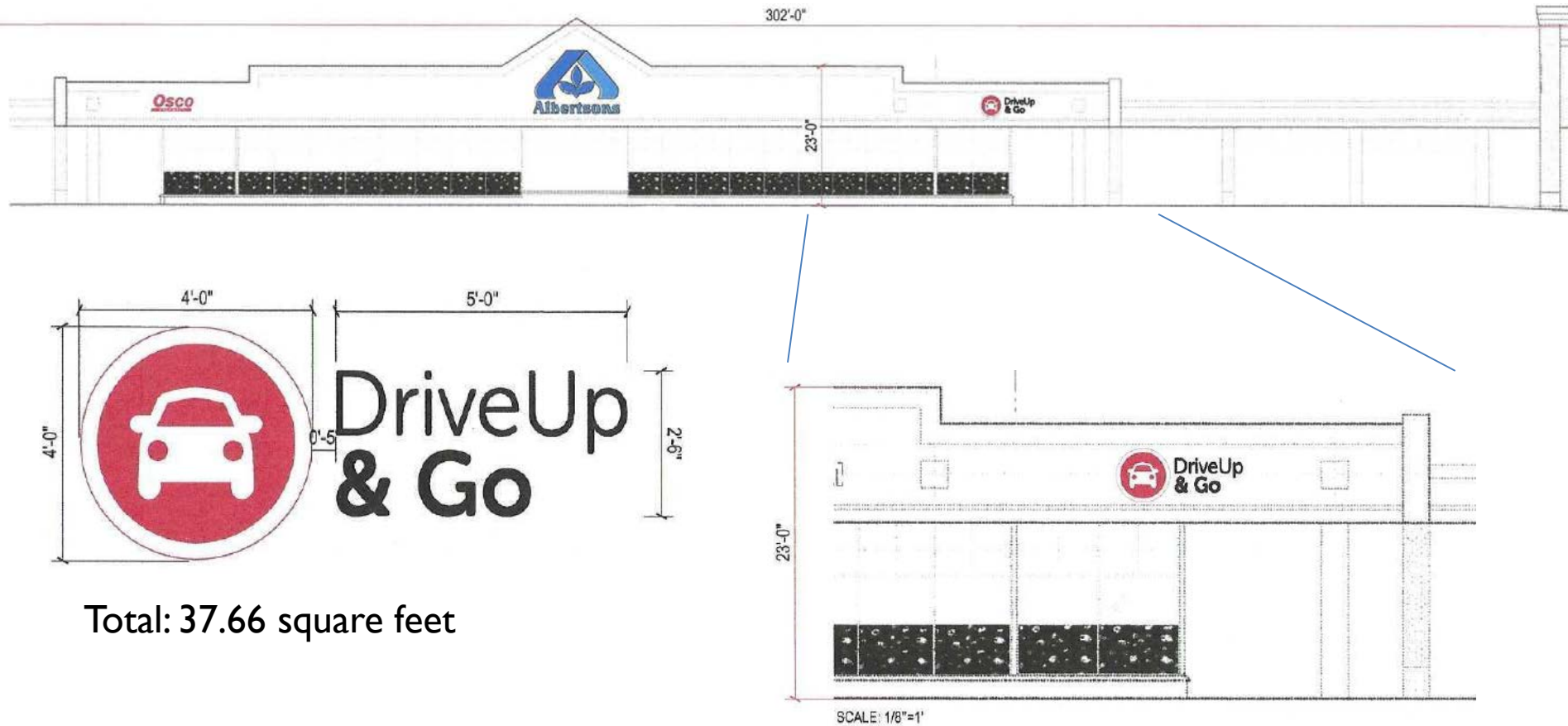
Total: 100.9 square feet

## Oxford Street:

Allowed: (1) at 302 square feet in area.

Existing: (2) at combined 120.9 square feet in area (20 square feet and 100.9 square feet)

# Proposed Wall Signs



Total: 37.66 square feet

## Oxford Street:

Allowed: (1) at 302 square feet in area.

Proposed: (3) at combined 158.56 square feet in area (20 square feet, 100.9 square feet, and 37.66 square feet)

# Summary and Recommendations



	Allowed	Proposed	Recommended
Number of Wall Signs	302 total square feet; 1 per frontage	158.56 total square feet; 3 per frontage	158.56 total square feet; 3 per frontage

## RECOMMENDED MOTION

**THAT** the Missoula Design Review Board **approve** the comprehensive sign package for Albertsons located at 2205 Oxford Street based on the findings of fact and testimony heard at the public hearing, subject to the two (2) conditions of approval:

- All signage requires approval of a sign permit by Development Services. Development Services will base the permit approval on the sign package approved by the Design Review Board. Signage shall not be modified or additional sign added beyond what was approved by the Design Review Board without re-submittal of an application and approval from the Design Review Board.
- Any applicable electrical, building and sign permits shall be obtained prior to installation of the signs.