

# **PUBLIC WORKS & MOBILITY DEPARTMENT**

---

**City Streetlights Update**  
**April 7, 2021**



# City-Owned Streetlights

## **Progress on LED replacements within City Right-of-Way:**

- Have replaced 90 high pressure sodium and metal halide light bulbs and fixtures with new LED fixtures.
- Plan to replace 60 fixtures by end of Summer 2021, completing all City-owned replacements.

# Street Lighting Improvement Districts (SLIDs)

## Requirements:

- Adopted in Chapter 7 of *Missoula City Public Works Standards and Specifications Manual*.
- Streetlights are desired for public safety.
- Requires all new streetlights to be in an SLID.
- SLID would pay for capital, operating, and maintenance costs.
- Developers create new SLIDs or are added to current, adjacent SLID.

# Street Lighting Improvement Districts (SLIDs)

## **Process for developments to create a new SLID:**

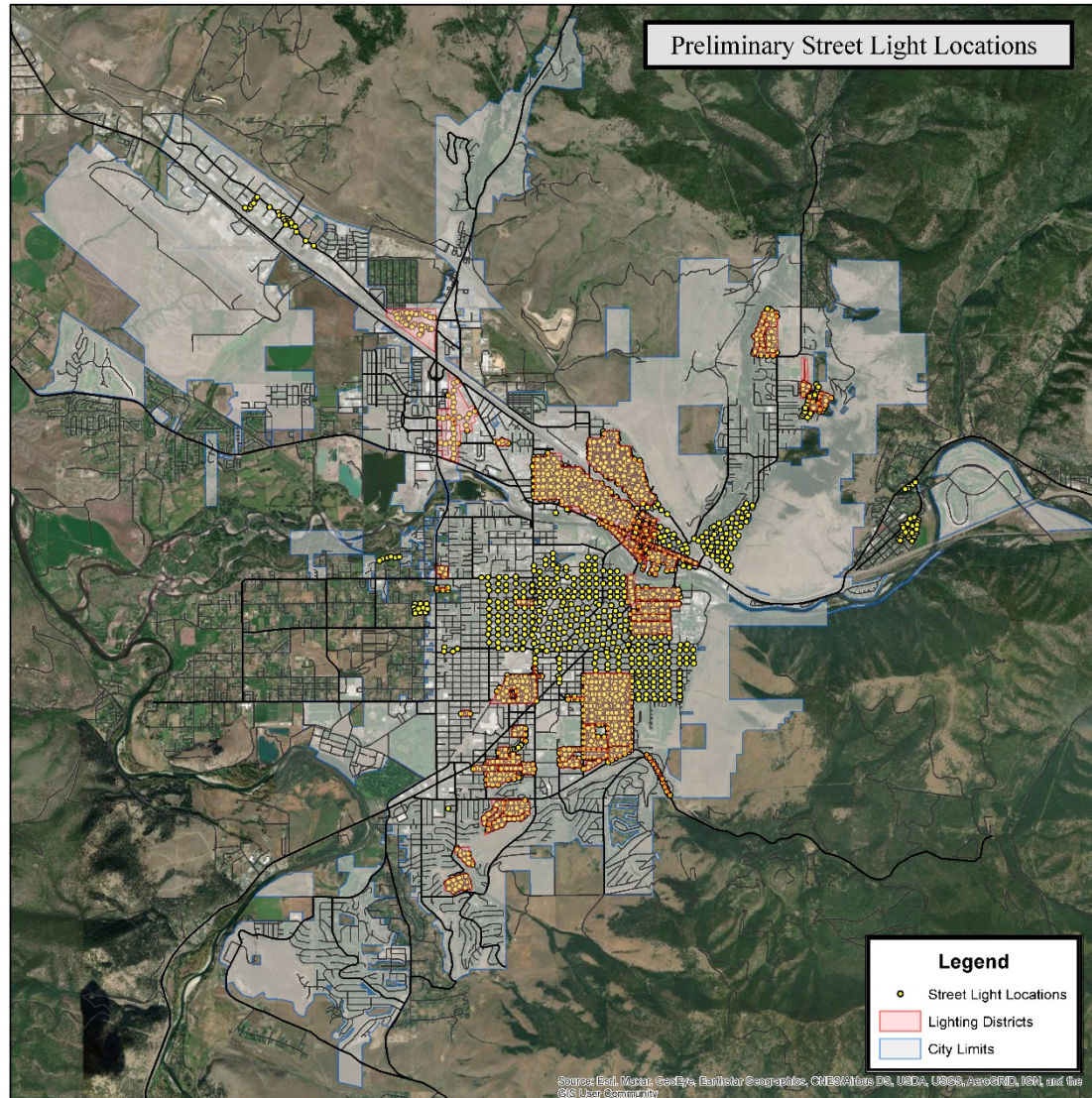
- Many ways to set up districts allowed by state law, the City prefers to use an area method for these new districts.
  - As new lots are platted, the property owner, will pay for costs of the district based on their individual lot area.
  - Developer would continue to pay for costs of the district based on the area of un-platted land within the district.
- City would update the district assessments each year as lots are platted and costs incurred within that district.

# Street Lighting Improvement Districts (SLIDs)

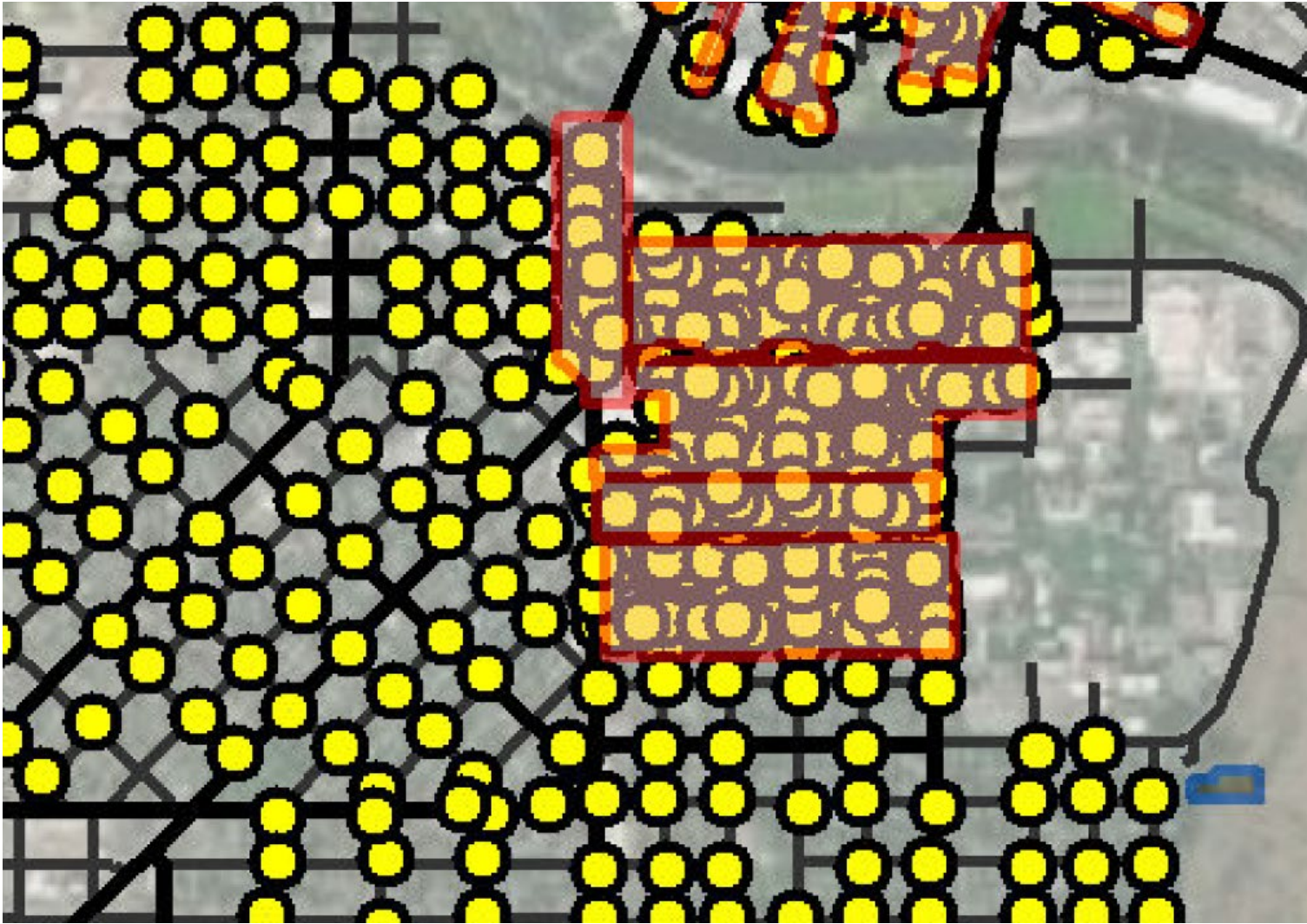
## **How will we address streetlights not currently in a lighting district?**

- Can add new lights within an existing SLID.
- Would need to change SLID boundary lines to add streetlights near an existing SLID.
- Would need to create new SLID for other new streetlights to pay for costs.
- SLIDs will come before Council to be approved.

# Street Lighting Improvement Districts (SLIDs)



# Street Lighting Improvement Districts (SLIDs)



# Street Lighting Improvement Districts (SLIDs)

## **Challenges to creating new or altering existing SLID boundaries for existing streetlights:**

- Determination of district boundary
- Methodology used for assessment (e.g., property area, property frontage)
- Desired level of service
- Public engagement/notification process
  - Compliance with State Law
- Obtain informed consent from property owners
- Staff time



**Questions?**