



Bluebird-North Hills

Proposed 2006 Open Space Acquisition



Photo by Brian Christianson

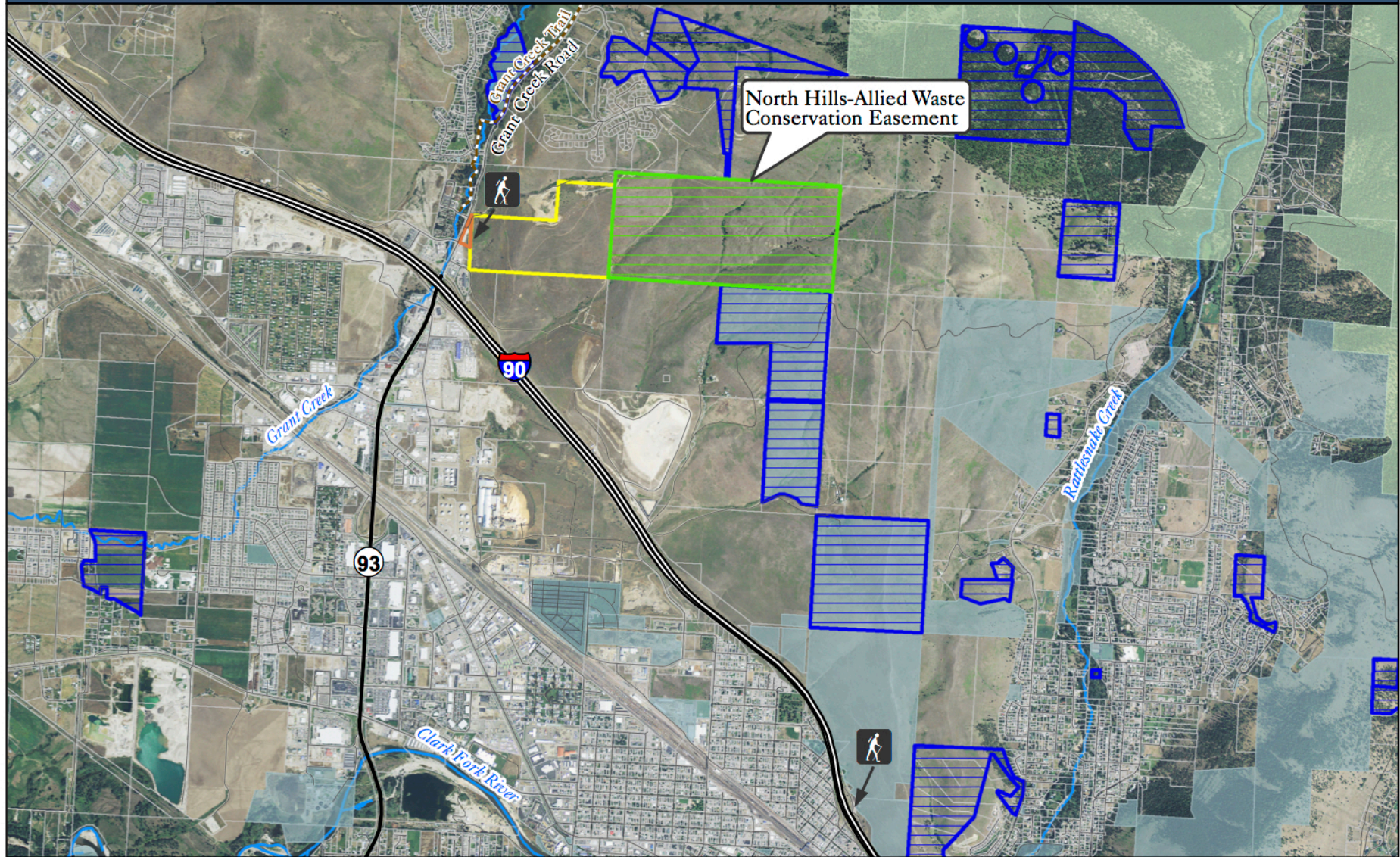



Bluebird-North Hills





Photo by Athena Lonsdale


Potential Bluebird-North Hills Trailhead





 Five Valleys Land Trust Ownership

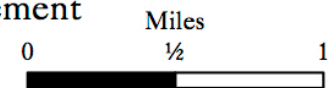
 Snowbowl Parking Lot

 Conservation Easement with Future Public Access

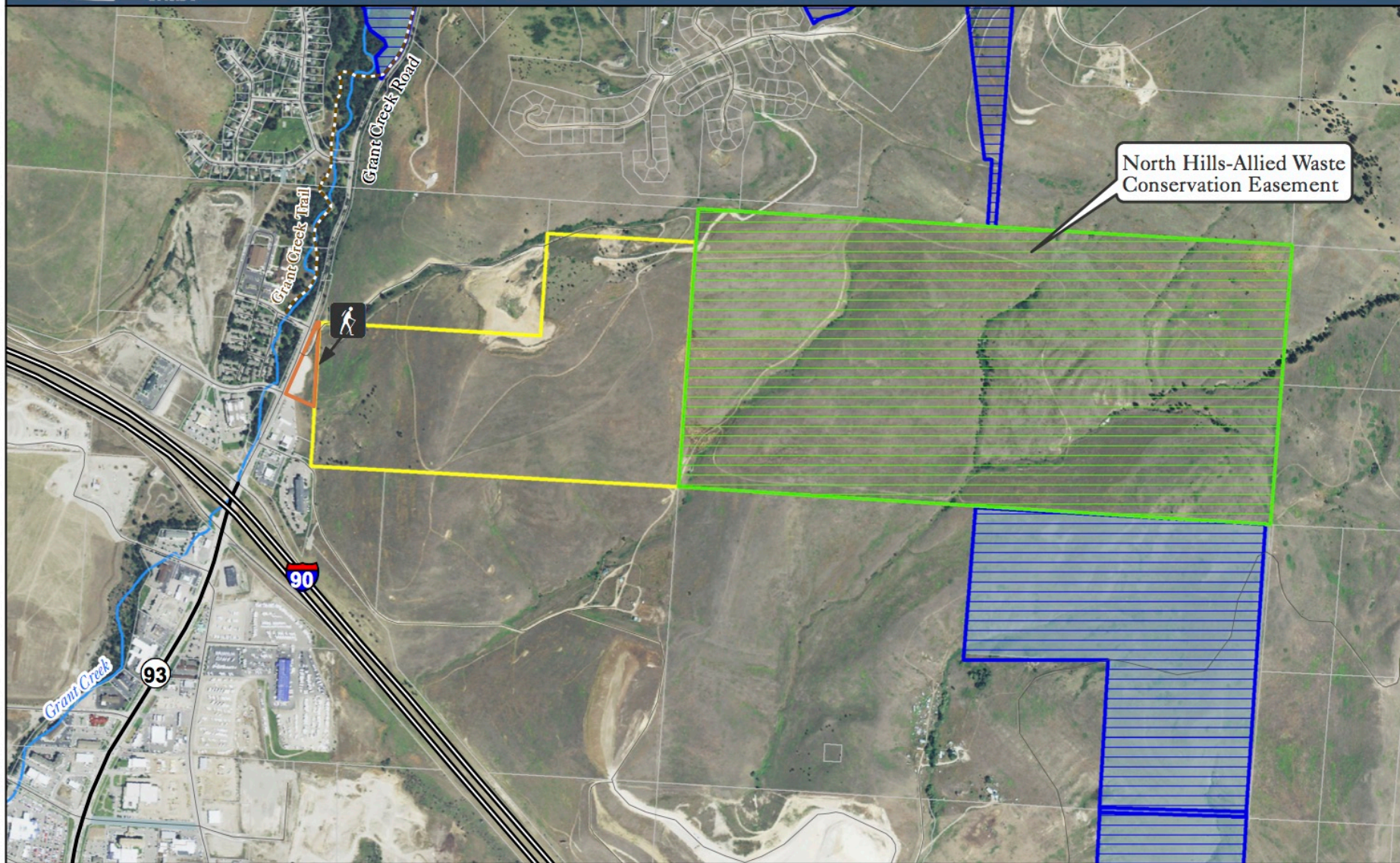
 FVLТ Conservation Easement

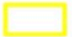
 City of Missoula


 US Forest Service





Potential Bluebird-North Hills Trailhead




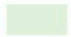
 Five Valleys Land Trust Ownership

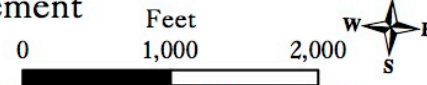
 Snowbowl Parking Lot

 Conservation Easement with Future Public Access

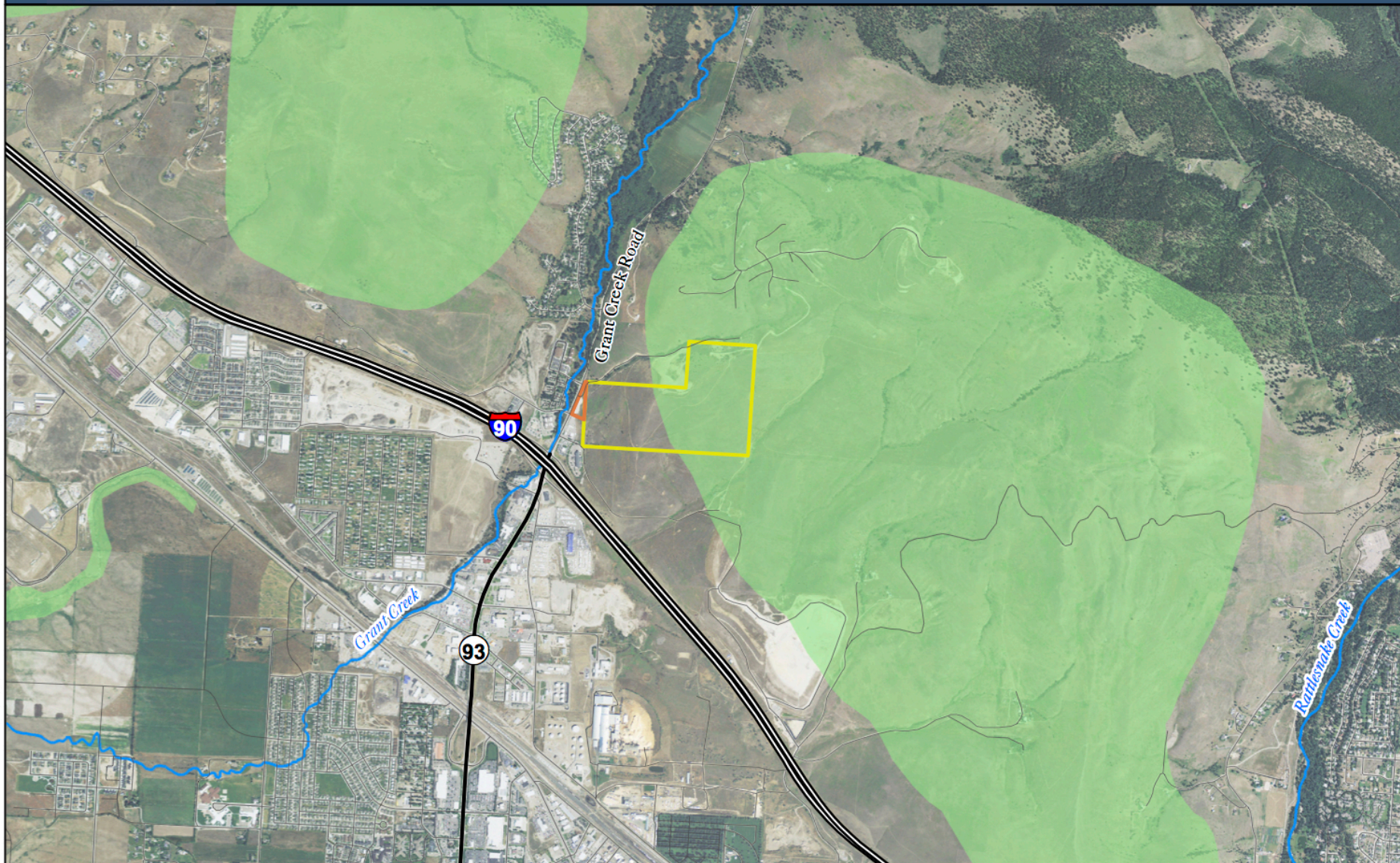
 FVLТ Conservation Easement

 City of Missoula

 US Forest Service



Map Created by: Daniel Quinn Updated on: 2019-04-23
Projected Coordinate System: NAD_1983_State_Plane_Montana_FIPS_2500



Open Space Cornerstones
 Five Valleys Land Trust
 Snowbowl Parking Lot



Miles
 0 $\frac{1}{2}$ 1



Public Access



Photo by Athena Lonsdale



Scenic Values



Photo by Brian Christianson



Plant & Wildlife Habitat

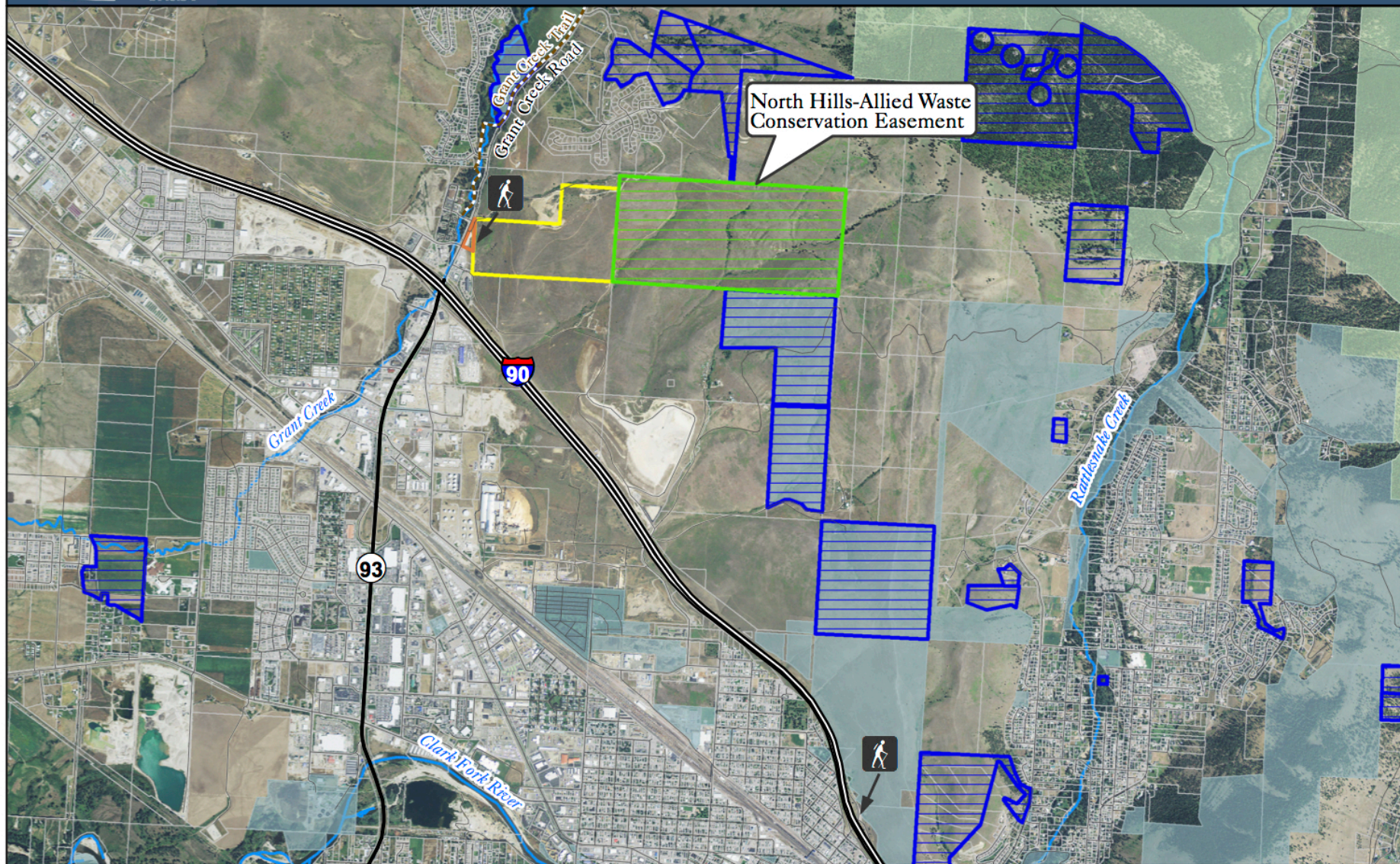






Management





Potential Bluebird-North Hills Trailhead





 Five Valleys Land Trust Ownership

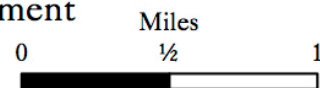
 Snowbowl Parking Lot

 Conservation Easement with Future Public Access

 FVLT Conservation Easement

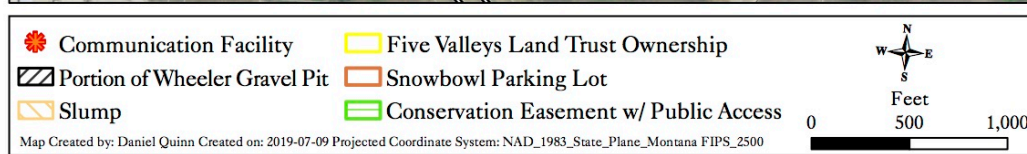
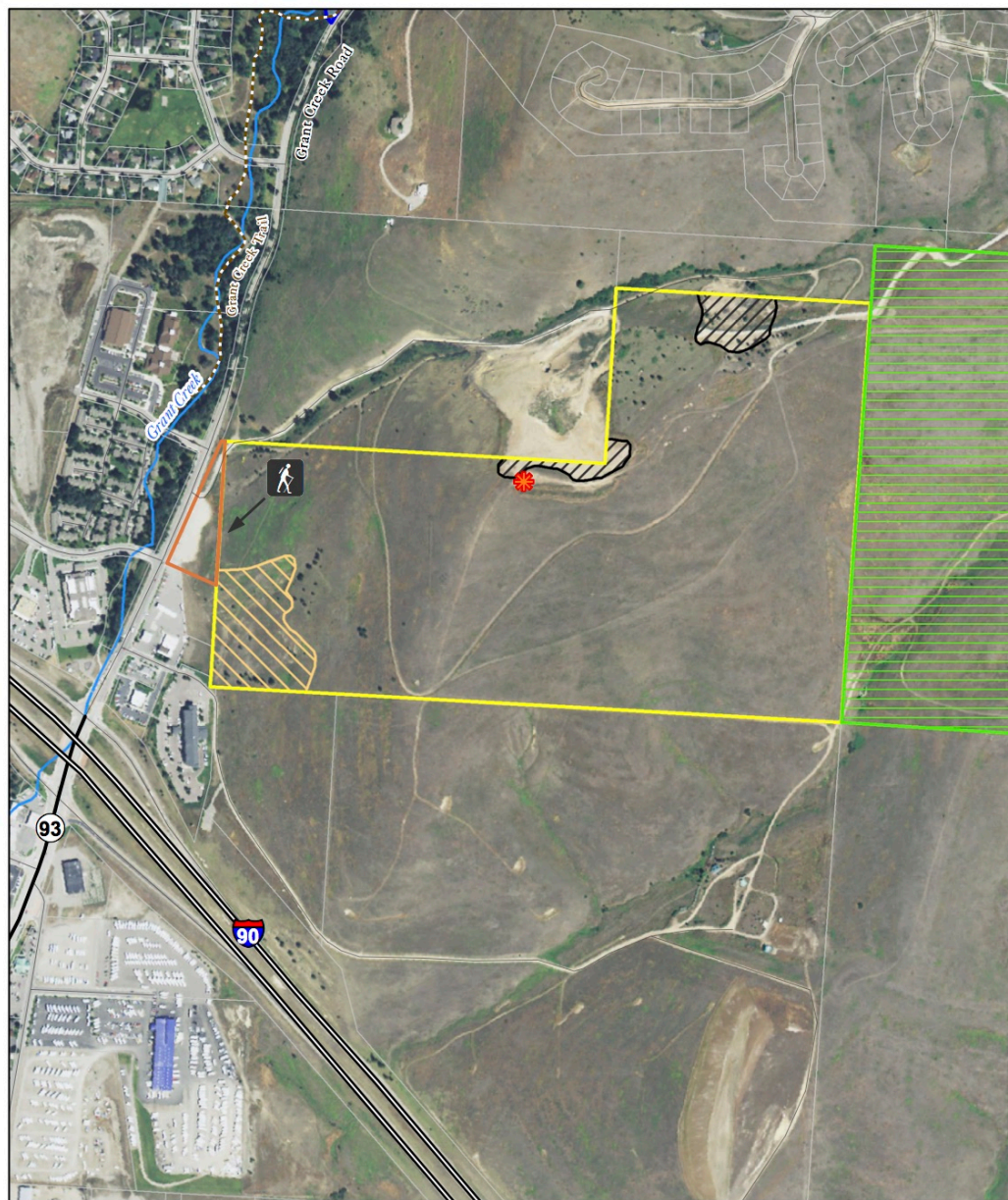
 City of Missoula

 US Forest Service



Site Conditions

- Portion of Wheeler Gravel Pit
- Communication Facility
- Slump
- Existing “road” network



Bluebird-North Hills Acquisition Budget

Open Space Bond request	\$450,000
Landowner contribution (in-kind)	\$210,000
Appraised Fair Market Value of Fee Property	\$660,000



Support



Photo by Athena Lonsdale



Photo by Athena Lonsdale